



### Civil Registration System

The civil registration system of Sri Lanka is maintained by the Registrar General's Department, which was established in 1867. Under the Births and Deaths Registration Act the registration of both births and deaths is compulsory in Sri Lanka from 1897.

The Registrar General is vested with the general control and superintendence of the registration of births, deaths and still births in Sri Lanka, and of all persons appointed for, and engaged in, carrying out the provisions of this act. For the purpose of registration of births, deaths and marriages, each administrative district is divided into small units called registration divisions. A birth, death and marriage, registration division is a sub division of a Divisional Secretariat. There is a registrar in each of these registration divisions. Every live birth or death that occurs in any part of Sri Lanka is required to be registered within a specified 5 day period.

### Role of Vital Statistics Unit

Data collection, coding, editing, tabulation, compilation & dissemination of vital statistics are done by Vital Statistics Unit which is under Department of Census and Statistics and the guidance of the Registrar General with the assistance of his staff recruited in all over the country.

**Table 01: Mid Year Population by Age Group and Sex 2010\* ('000)**

Age Group	Total	Male	Female
Sri Lanka	20653	10249	10404
0 - 4	1755	892	863
5 - 9	1817	922	895
10 - 14	1859	943	916
15 - 19	2003	1015	988
20 - 24	1942	974	968
25 - 29	1631	799	832
30 - 34	1580	779	801
35 - 39	1538	758	780
40 - 44	1425	707	718
45 - 49	1250	615	635
50 - 54	1126	554	572
55 - 59	817	390	427
60 - 64	609	297	312
65 - 69	485	225	260
70 - 74	372	174	198
75 - 79	238	113	125
80+	206	92	114

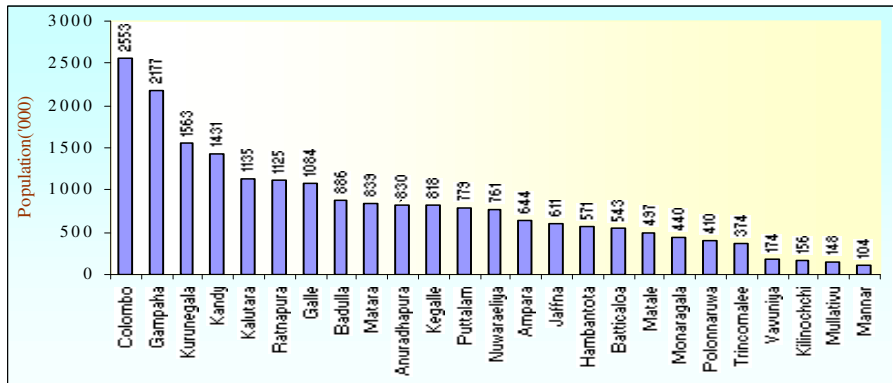
\* Provisional

**Table 02: Total live Births & Mid Year Population by Sex 1992-2010**

Year	Mid Year Population '000			Live Births		
	Total	Male	Female	Total	Male	Female
1992	17,426	8,884	8,542	356,842	181,625	175,217
1993	17,646	8,996	8,650	350,707	178,577	172,130
1994	17,891	9,121	8,770	356,071	181,634	174,437
1995	18,136	9,246	8,890	343,224	174,675	168,549
1996	18,336	9,347	8,989	340,649	173,603	167,046
1997	18,568	9,465	9,103	333,219	170,403	162,816
1998	18,787	9,584	9,203	322,672	165,078	157,594
1999	19,056	9,721	9,335	328,725	167,889	160,836
2000	19,102	9,745	9,357	347,749	178,254	169,495
2001	18,797	9,359	9,438	358,583	183,409	175,174
2002	18,921	9,350	9,571	367,709	187,561	180,148
2003	19,173	9,475	9,698	370,643	189,508	181,135
2004	19,435	9,678	9,757	364,711	186,104	178,607
2005	19,644	9,782	9,862	370,731	189,327	181,404
2006	19,858	9,889	9,969	373,538	191,263	182,275
2007	20,010	9,878	10,132	386,573	198,018	188,555
2008*	20,217	9,980	10,237	379,912	193,460	186,452
2009*	20,450	10,148	10,302	376,843	192,097	184,746
2010*	20,653	10,249	10,404	NA	NA	NA

\*Provisional NA= Not Available

**Figure 01: Estimated Mid Year Population by District 2010**



### Data Collection System

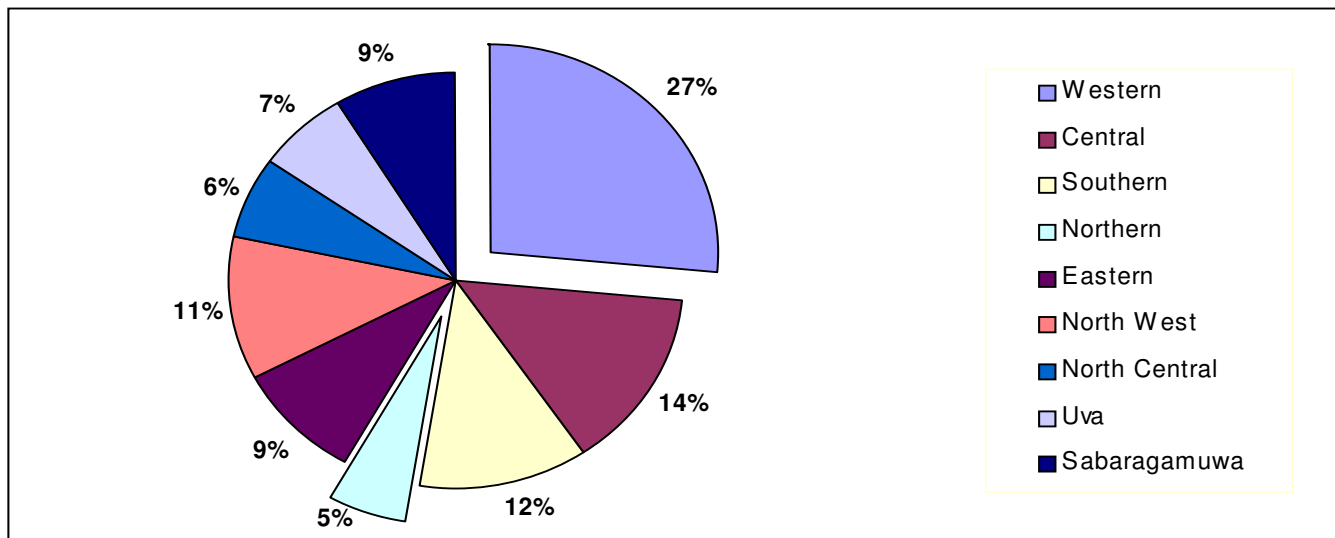
The completed statistical returns are handover with the duplicates of birth & death certificates to the relevant Divisional Secretaries Office. The information relating to births, deaths and marriages and still births found in the returns of live births, deaths, marriages and still births of the Local Registrars and forwarded to the 33 District Scanning Centers monthly are scanned forms are sent to the Vital Statistics Unit of the Registrar General's Department which is in charge of a Senior Statistician attached from the department of Census & Statistics whom assisted by Statistical Officers and Coding Clerks.

**Table 03: Live Births by Registered District and Sex 2008 - 2009**

District	2008*			2009*		
	Total	Male	Female	Total	Male	Female
Sri Lanka	379,912	193,460	186,452	376,843	192,097	184,746
Colombo	58,574	29,739	28,835	57,682	29,192	28,490
Gampaha	27,713	14,046	13,667	25,167	12,940	12,227
Kalutara	17,405	8,906	8,499	17,588	9,017	8,571
Kandy	30,801	15,741	15,060	31,315	15,961	15,354
Matale	10,523	5,320	5,203	10,459	5,320	5,139
Nuwaraeliya	10,928	5,594	5,334	10,815	5,646	5,169
Galle	20,834	10,507	10,327	20,725	10,586	10,139
Matara	14,644	7,443	7,201	14,770	7,541	7,229
Hambantota	9,513	4,818	4,695	9,738	4,909	4,829
Jaffna	7,567	3,803	3,764	7,328	3,711	3,617
Kilinochchi	4,919	2,524	2,395	4,919	2,524	2,395
Mannar	1,376	690	686	1,379	692	687
Vavuniya	3,046	1,578	1,468	2,991	1,540	1,451
Mullativu	4,109	2,076	2,033	4,068	2,016	2,052
Batticaloa	11,519	5,891	5,628	11,109	5,671	5,438
Ampara	14,649	7,434	7,215	14,136	7,212	6,924
Trincomalee	9,480	4,860	4,620	9,251	4,734	4,517
Kurunegala	26,474	13,529	12,945	26,748	13,628	13,120
Puttalam	14,972	7,568	7,404	14,975	7,631	7,344
Anuradhapura	16,252	8,307	7,945	16,492	8,322	8,170
Polonnaruwa	7,427	3,756	3,671	7,440	3,782	3,658
Badulla	17,997	9,255	8,742	18,094	9,353	8,741
Monaragala	7,196	3,693	3,503	7,130	3,612	3,518
Ratnapura	20,370	10,346	10,024	21,215	10,820	10,395
Kegalle	11,624	6,036	5,588	11,309	5,737	5,572

\*Provisional

**Figure 02: Registered Live Births by Provinces 2009\***



As shows in the table 3 around 27% of the total live births occur in the western province in 2009 while it is around 5% for the Northern Province.

**Table 04: Deaths & Crude Death Rates by Sex 1992-2009**

Year	Number of Deaths			Crude Death Rate		
	Total	Male	Female	Total	Male	Female
1992	98380	61191	37189	5.6	6.9	4.4
1993	96179	59737	36442	5.5	6.6	4.2
1994	100394	62020	38374	5.6	6.8	4.4
1995	104707	65716	38991	5.8	7.1	4.4
1996	122161	79784	42377	6.7	8.5	4.7
1997	114591	71995	42596	6.2	7.6	4.7
1998	112653	70060	42593	6.0	7.3	4.6
1999	115330	72245	43085	6.1	7.4	4.6
2000	116200	72987	43213	6.1	7.5	4.6
2001	112858	70646	42212	6.0	7.5	4.5
2002	111863	69242	42621	5.9	7.4	4.5
2003	115495	70814	44681	6.0	7.5	4.6
2004	114915	69549	45366	5.9	7.2	4.6
2005	132097	75663	56434	6.7	7.7	5.7
2006	117467	69895	47572	5.9	7.1	4.8
2007	118998	71207	47791	5.8	6.9	4.8
2008*	118279	68807	49472	5.9	6.9	4.8
2009*	120085	69999	50086	5.9	6.9	4.9

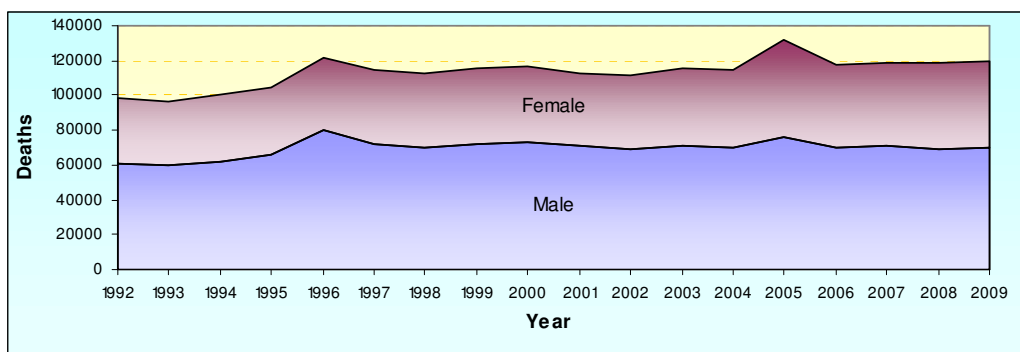
\*Provisional

**Table 05: Deaths by District & Sex 2008-2009**

District	2008*			2009*		
	Total	Male	Female	Total	Male	Female
Sri Lanka	118279	68807	49472	120085	69999	50086
Colombo	18823	10572	8251	20874	12012	8862
Gampaha	10787	6134	4653	9954	5707	4247
Kalutara	6826	3837	2989	6827	3834	2993
Kandy	9596	5536	4060	10403	5865	4538
Matale	2726	1636	1090	2617	1567	1050
Nuwaraeliya	3801	2079	1722	3895	2123	1772
Galle	7839	4510	3329	7756	4411	3345
Matara	5125	2801	2324	5235	2879	2356
Hambantota	2632	1541	1091	2662	1492	1170
Jaffna	3544	2066	1478	3364	1992	1372
Kilinochchi	635	392	243	635	392	243
Mannar	282	175	107	287	179	108
Vavuniya	984	700	284	935	647	288
Mullativu	486	339	147	520	361	159
Batticaloa	2524	1530	994	2478	1483	995
Ampara	2681	1638	1043	2754	1645	1109
Trincomalee	1596	1012	584	1570	983	587
Kurunegala	9829	5629	4200	9656	5698	3958
Puttalam	3804	2265	1539	3734	2193	1541
Anuradhapura	4473	2855	1618	4649	3014	1635
Polonnaruwa	1992	1243	749	1912	1228	684
Badulla	4851	2884	1967	4617	2722	1895
Monaragala	1423	908	515	1528	965	563
Ratnapura	5948	3635	2313	6330	3809	2521
Kegalle	5072	2890	2182	4893	2798	2095

\*Provisional

**Figure 03: Deaths by Sex and Year 1992 - 2009**

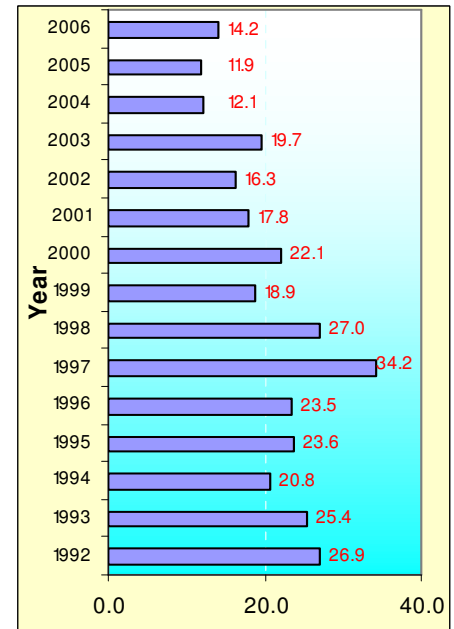


During The period from 1992 to 2009, Male deaths are significantly higher than the female deaths. Crude death rates are higher in 1996 & 2005. Because struggle period in 1988 & 1989 deaths were registered in 1996 and Tsunami disaster (that happened in 2004) deaths were registered in 2005.

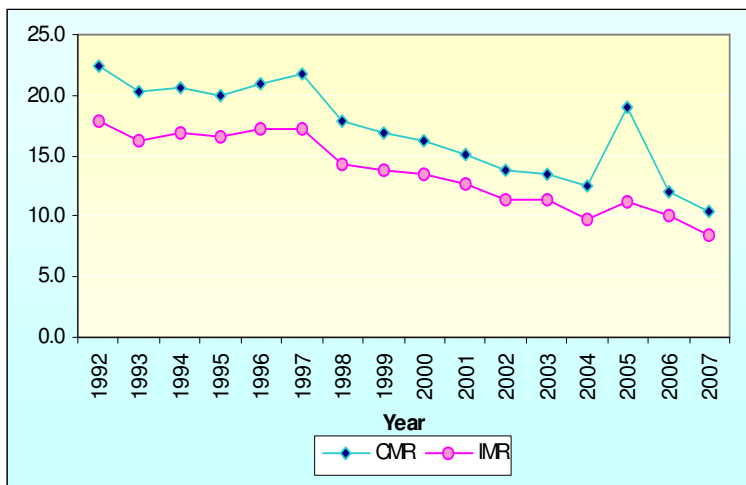
**Table 06: Death Rates by Year 1992 – 2007**

Year	Child Mortality Rate			Infant Mortality Rate			Neo Natal Mortality Rate			Maternal Mortality Rate
	Total	Male	Female	Total	Male	Female	Total	Male	Female	
1992	22.5	24.6	20.2	17.9	20.0	15.7	13.0	14.9	11.0	26.9
1993	20.2	21.8	18.6	16.3	17.9	14.6	12.0	13.4	10.6	25.4
1994	20.5	22.1	18.9	16.9	18.5	15.2	12.9	14.3	11.3	20.8
1995	20.0	21.4	18.6	16.5	17.9	15.1	12.5	13.8	11.2	23.6
1996	20.9	22.7	19.0	17.3	18.8	15.6	13.0	14.4	11.4	23.5
1997	21.8	22.9	20.5	17.2	18.5	15.8	12.8	14.1	11.4	34.2
1998	17.9	19.0	16.8	14.3	15.6	13.1	10.5	11.5	9.5	27.0
1999	16.8	17.8	15.8	13.8	14.7	12.9	10.6	11.5	9.8	18.9
2000	16.3	17.8	14.7	13.4	14.8	11.9	9.9	11.1	8.7	22.1
2001	15.2	16.7	13.5	12.6	14.0	11.1	9.6	10.7	8.4	17.8
2002	13.7	15.1	12.3	11.4	12.7	10.1	8.4	9.4	7.2	16.3
2003	13.5	14.5	12.4	11.3	12.4	10.3	8.7	9.5	7.8	19.7
2004	12.6	13.4	11.7	9.8	10.6	9.0	7.2	8.0	6.4	12.1
2005	19.0	20.0	18.0	11.2	12.2	10.2	7.2	8.0	6.4	11.9
2006	12.0	13.0	10.9	10.0	10.8	9.2	7.4	8.0	6.8	14.2
2007	10.4	11.4	9.3	8.5	9.4	7.6	5.9	6.6	5.3	NA

**Figure 04: Maternal Mortality Rate**



**Figure 05: CMR & IMR by Year 1992 -2007**



$$\text{Crude Death Rate} = \frac{\text{Number of Deaths}}{\text{Mid Year Population}} \times 1,000$$

$$\text{Child Mortality Rate} = \frac{\text{No. of Deaths under 5 year}}{\text{Number of live births}} \times 1,000$$

$$\text{Infant Mortality Rate} = \frac{\text{No. of Deaths under 1 year}}{\text{Number of live births}} \times 1,000$$

$$\text{Maternal Mortality Rate} = \frac{\text{No. of maternal deaths}}{\text{Number of live births}} \times 100,000$$

$$\text{Neo-natal Mortality Rate} = \frac{\text{No. of deaths among live births during the first 28 completed days of life}}{\text{Number of live births}} \times 1,000$$

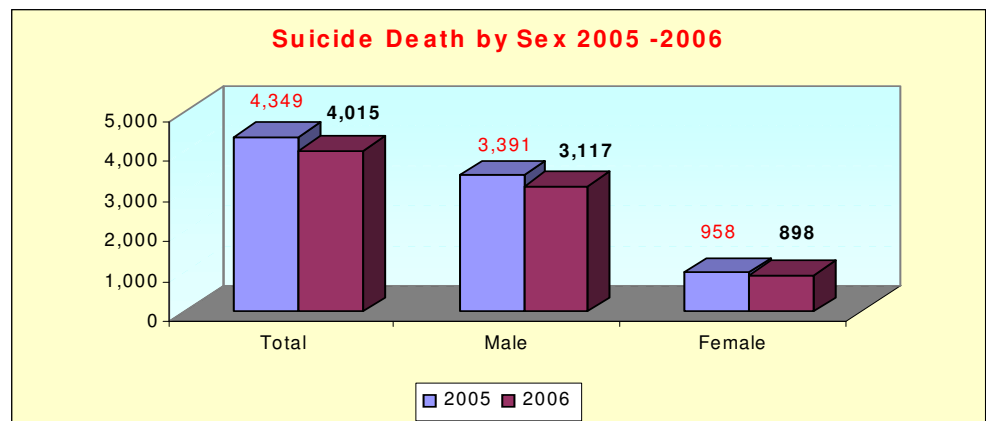
The decline trend can be shown both Infant Mortality Rate (IMR) & Child Mortality Rate (CMR) for the last 15 years. CMR was reported as 22.5 in 1992 which has decreased by 53.8% since then in 2007 and at the same period IMR has also decreased by 52.5% due to the improvement of health facilities. Furthermore it can be seen that Maternal Mortality Rate (MMR) has declined more than half of its rate during the last 15 years.

**Cause of Death**

Cause of death data processing is done by Vital Statistics Unit based on international classification of disease (ICD). The figure 06 represents the suicide deaths by sex in year 2005 and 2006. Male deaths are higher than the female deaths in both years.

Table 07 represents leading causes in year 2005 and 2006. According to the table 07 “All other external causes” in 2005 (that included the Tsunami deaths in 2004) are extremely higher than 2006.

**Figure 06: Suicide deaths by Sex 2005- 2006**



**Table 07: Distribution of Leading Causes of Death, Year and Sex 2005 - 2006**

Cause of Death	Years					
	2005			2006		
	Total	Male	Female	Total	Male	Female
Septicaemia	1,573	937	636	1,442	882	560
Remainder of malignant neoplasm	4,125	2,203	1,922	4,196	2,405	1,791
Diabetes mellitus	4,792	2,536	2,256	8,516	4,641	3,875
Remainder of disease of the nervous system	9,397	5,138	4,259	10,117	5,381	4,736
Hypertensive diseases	5,096	2,773	2,323	7,920	4,163	3,757
Ischaemic heart diseases	6,317	4,185	2,132	6,641	4,274	2,367
Other heart diseases	12,582	8,166	4,416	10,763	6,823	3,940
Cerebrovascular diseases	3,184	1,952	1,232	3,299	2,041	1,258
Pneumonia	2,281	1,499	782	2,262	1,440	822
Chronic lower respiratory diseases	6,507	3,921	2,586	8,236	4,925	3,311
Remainder of diseases of the respiratory system	1,096	706	390	964	627	337
Diseases of the liver	3,808	3,374	434	3,303	2,818	485
Remainder of diseases of the genitourinary system	2,632	1,834	798	2,752	1,879	873
Certain condition originating in the perinatal period	2,096	1,179	917	2,609	1,443	1,166
Symptoms, signs and abnormal clinical and laboratory findings	24,740	12,103	12,637	19,349	9,368	9,981
Transport accidents	2,211	1,846	365	2,466	1,987	479
Intentional self-harm	4,349	3,391	958	4,015	3,117	898
All other external causes	20,981	9,111	11,870	3,270	2,529	741

**Use of International Classification of Diseases (ICD-10) in classifying the cause of death**

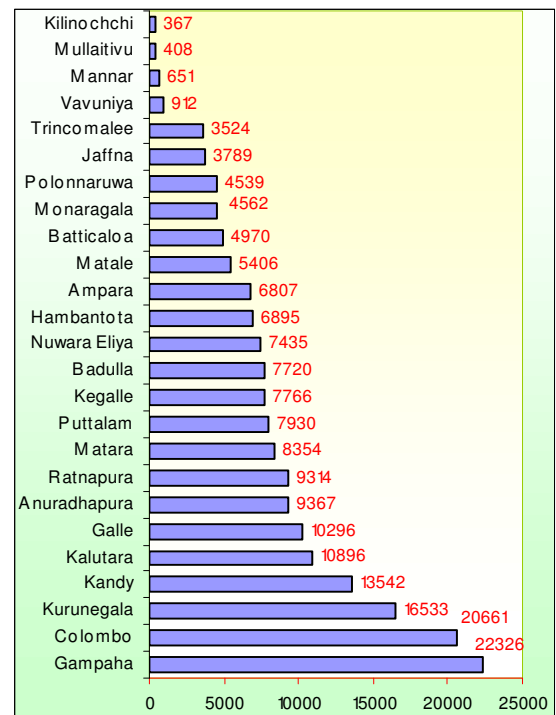
Causes of death are classified and grouped according to the current revision of the International Classification of Diseases (ICD – 10) in which regulations and recommendations relevant to the certification of causes of death and preparation of statistics have been published. The cause of death coding is done by trained coders at the central registrar general office using the scanned death declaration forms which were scanned and sent from the scanning centers at the Land registry offices.

**Table 08: Registered Marriages by Type of Marriage, 1992-2009**

Year	Crude Marriage Rate	Registered Marriages							
		Total	General		Kandyan		Muslim		
			Total	%	Total	%	Total	%	
1992	8.9	155345	129697	83.5	11975	7.7	13673	8.8	
1993	8.6	152423	130856	85.8	9721	6.4	11846	7.8	
1994	9.1	162489	139827	86.0	8767	5.4	13895	8.6	
1995	9.3	169220	146018	86.3	8313	4.9	14889	8.8	
1996	9.5	173873	149358	85.9	9202	5.3	15313	8.8	
1997	9.1	168015	144380	85.9	8637	5.2	14998	8.9	
1998	9.9	186568	161458	86.5	8310	4.5	16800	9.0	
1999	9.1	174223	150356	86.3	7291	4.2	16576	9.5	
2000	10.2	194217	168127	86.6	8336	4.3	17754	9.1	
2001	10.2	190988	165053	86.4	8263	4.3	17672	9.3	
2002	10.4	197589	171996	87.0	7817	4.0	17776	9.0	
2003	10.2	195914	171304	87.4	7017	3.6	17593	9.0	
2004	10.0	193317	169106	87.5	6476	3.3	17735	9.2	
2005	9.9	195067	169489	86.9	6142	3.1	19436	10.0	
2006	9.9	196817	173513	88.2	4690	2.4	18614	9.4	
2007*	9.8	195193	172489	88.4	4557	2.3	18147	9.3	
2008*	9.8	198578	174530	87.9	4651	2.3	19397	9.8	
2009*	9.5	194970	171218	87.8	4177	2.1	19575	10.0	

\*Provisional

**Figure 07: Marriages by District - 2009**



**Vital Statistics Unit**

**Registrar General's Department**

234/A 3, Denzil Kobbakaduwa Mawatha, Baththaramulla, T.P.011-2889488, 011-2889489

Web site: [www.rgd.gov.lk](http://www.rgd.gov.lk) E-mail: [rg@rgd.gov.lk](mailto:rg@rgd.gov.lk), [rgdept@sltnet.lk](mailto:rgdept@sltnet.lk)