

The Registrar General's Department was formed for registration of births, deaths and marriages of Sri Lankans, and legal documents pertaining to properties, with a view to safeguarding their fundamental rights. The Department was initially established in 1864 for the purpose of registration of land and entrusted with civil registration in 1867. For the purpose of registration of births, deaths and marriages each administrative district is divided in to small units called registration divisions and Local Registrars are attached to these divisions. The collection, compilation, analysis, tabulation and dissemination of vital statistics are carried out by the Department of Census and Statistics.

HIGHLIGHTS

- Estimated Mid-Year Population of Sri Lanka is 21 million in 2015.
- Highest population of 2.4 million is reported from Colombo district whereas lowest is reported from Mullaitivu district.
- As a result of natural increase, the excess of births over deaths, an estimated 203,207 people were added to the population during 2015 at an annual rate of 0.96 percent.
- The number of births in 2015 was 334,821 (a decrease of 14,894 from 2014).
- Sri Lanka's Crude Birth Rate in 2015 was 16.0 per 1000 population, a decline from 2014 rate of 16.9.
- There were 131,614 deaths registered in Sri Lanka in 2015. (74,040 - Males and 57,574 – Females).
- The Crude Death Rate in 2015 was 6.3 deaths per 1000 population.
- A total of 175,939 marriages were registered in 2015.

POPULATION.....

Table 1: Mid-Year Population by District-2015 ('000)

District	2015*		
	Total	Male	Female
Sri Lanka	20,966	10,151	10,815
Colombo	2,375	1,165	1,210
Gampaha	2,354	1,141	1,213
Kalutara	1,250	605	645
Kandy	1,416	675	741
Matale	502	242	260
Nuwara-eliya	740	354	386
Galle	1,091	523	568
Matara	837	401	436
Hambantota	628	309	319
Jaffna	597	280	317
Kilinochchi	120	59	61
Mannar	104	52	52
Vavuniya	179	88	91
Mullaitivu	94	47	47
Batticaloa	541	258	283
Ampara	677	328	349
Trincomalee	397	196	201
Kurunegala	1,658	796	862
Puttalam	790	382	408
Anuradhapura	893	436	457
Polonnaruwa	419	207	212
Badulla	844	406	438
Monaragala	472	235	237
Ratnapura	1,127	556	571
Kegalle	861	410	451

Table 2: Mid-year Population Estimates by Age Group and Sex-2015 ('000)

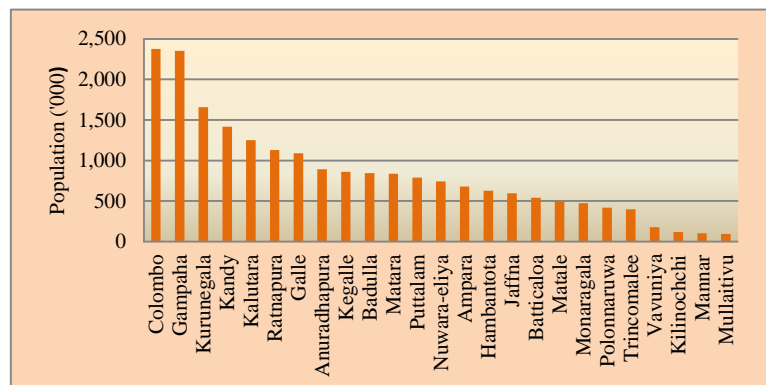
Age group	2015*		
	Total	Male	Female
Total	20,966	10,151	10,815
0-4	1,797	906	891
5-9	1,801	909	892
10-14	1,690	854	836
15-19	1,694	845	849
20-24	1,578	764	814
25-29	1,599	766	833
30-34	1,688	820	868
35-39	1,451	706	745
40-44	1,399	681	718
45-49	1,324	637	687
50-54	1,256	599	657
55-59	1,096	516	580
60-64	945	438	507
65-69	652	292	360
70-74	424	187	237
75-79	291	120	171
80+	281	111	170

* Provisional

* Provisional

District level figures are given on the basis of usual residence.

Figure 1: Estimated Mid-Year Population by District-2015



BIRTHS.....

Table 3: Number of Live Births and Crude Birth rate by District, Province and Sex -2014, 2015

District/Province	2014*			Crude Birth Rate (CBR) (b)	2015*			Crude Birth Rate (CBR) (b)
	Number of Live Births (a)				Number of Live Births (a)			
	Total	Male	Female		Total	Male	Female	
Sri Lanka	349,715	177,840	171,875	16.9	334,821	169,918	164,903	16.0
Western	94,455	47,720	46,735	14.6	90,454	45,720	44,734	13.8
Colombo	53,742	26,939	26,803	15.4	50,894	25,574	25,320	14.4
Gampaha	25,039	12,723	12,316	13.7	24,271	12,320	11,951	13.1
Kalutara	15,674	8,058	7,616	14.8	15,289	7,826	7,463	14.2
Central	49,379	25,292	24,087	18.5	46,531	23,741	22,790	17.2
Kandy	29,798	15,184	14,614	18.8	28,099	14,365	13,734	17.5
Matale	10,150	5,279	4,871	19.1	9,342	4,729	4,613	17.4
Nuwaraeliya	9,431	4,829	4,602	17.5	9,090	4,647	4,443	16.5
Southern	42,426	21,509	20,917	17.2	41,194	20,908	20,286	16.5
Galle	19,345	9,745	9,600	16.7	19,220	9,686	9,534	16.4
Matara	11,964	6,100	5,864	15.2	11,224	5,780	5,444	14.2
Hambantota	11,117	5,664	5,453	20.9	10,750	5,442	5,308	19.7
Northern	17,192	9,008	8,184	15.9	16,368	8,216	8,152	14.9
Jaffna	8,540	4,592	3,948	14.9	7,855	3,989	3,866	13.6
Kilinochchi	2,264	1,164	1,100	19.1	2,026	1,024	1,002	16.9
Mannar	1,348	686	662	15.4	1,677	858	819	18.1
Vavuniya	4,053	2,080	1,973	19.6	3,690	1,795	1,895	17.6
Mullaitivu	987	486	501	11.6	1,120	550	570	12.2
Eastern	31,151	15,787	15,364	20.3	30,297	15,514	14,783	19.4
Batticaloa	9,552	4,880	4,672	18.1	9,210	4,740	4,470	17.3
Ampara	13,345	6,725	6,620	21.1	13,297	6,773	6,524	20.5
Trincomalee	8,254	4,182	4,072	22.1	7,790	4,001	3,789	20.5
North-West	14,116	7,175	6,941	17.0	36,951	18,888	18,063	16.3
Kurunegala	23,834	12,211	11,623	16.0	23,231	11,884	11,347	15.4
Puttalam	14,116	7,175	6,941	19.2	13,720	7,004	6,716	18.4
North-Central	22,675	11,436	11,239	17.8	22,414	11,397	11,017	17.2
Anuradhapura	15,430	7,762	7,668	17.8	15,376	7,852	7,524	17.3
Polonnaruwa	7,245	3,674	3,571	17.7	7,038	3,545	3,493	16.9
Uva	24,197	12,253	11,944	18.8	22,141	11,167	10,974	17.0
Badulla	16,928	8,616	8,312	18.4	15,076	7,610	7,466	16.2
Monaragala	7,269	3,637	3,632	19.5	7,065	3,557	3,508	18.4
Sabaragamuwa	30,290	15,449	14,841	17.1	28,471	14,367	14,104	15.9
Ratnapura	20,005	10,144	9,861	18.0	18,866	9,576	9,290	16.7
Kegalle	10,285	5,305	4,980	16.0	9,605	4,791	4,814	14.9

* Provisional

Note: (a) District level & Provincial level data based on the place of occurrence.

(b) District level & Provincial level data based on the usual residence

Figure 2: Crude Birth Rate (CBR) by Year, 2000-2015

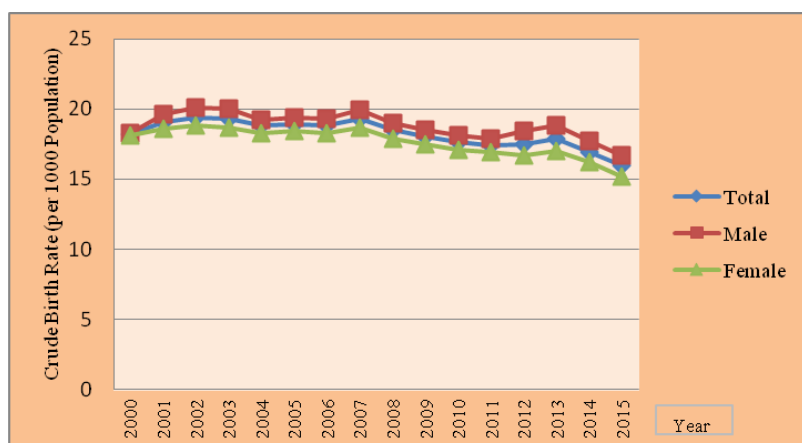


Table 4: Crude Birth Rate by Year, 2000-2015

Year	Crude Birth Rate (CBR)		
	Total	Male	Female
2000	18.2	18.3	18.1
2001	19.1	19.6	18.6
2002	19.4	20.1	18.8
2003	19.3	20.0	18.7
2004	18.8	19.2	18.3
2005	18.9	19.4	18.4
2006	18.8	19.3	18.3
2007	19.3	19.9	18.7
2008	18.5	19.0	17.9
2009	18.0	18.5	17.5
2010	17.6	18.1	17.1
2011*	17.4	17.9	16.9
2012*	17.5	18.4	16.7
2013*	17.9	18.8	17.0
2014*	16.9	17.7	16.2
2015*	16.0	16.7	15.2

*Provisional

Note: CBR is per 1000 population

According to the table 3, out of the total number of registered births (334,821) in the year 2015, there were 169,918 males and 164,903 females.

Regardless of the gender, the highest Crude Birth Rate 20.5 is reported from Trincomalee and Ampara districts while lowest is reported from Mullaitivu district (12.2) in 2015.

Considering the Crude Birth Rate (CBR) by province, highest CBR (19.4) reported in Eastern Province and lowest CBR (13.8) from the Western Province in 2015.

Figure 2 and Table 4 provides information on the CBR since year 2000. Accordingly male CBR is always higher than that of females and there is a declining trend in birth rate.

DEATHS.....

Table 5: Number of Deaths and Crude Death Rate by District, Province and Sex-2014, 2015

District/Province	2014*			Crude Death Rate (CDR) (b)	2015*			Crude Death Rate (CDR) (b)
	Number of Deaths (a)				Number of Deaths (a)			
	Total	Male	Female		Total	Male	Female	
Sri Lanka	127,758	71,364	56,394	6.2	131,614	74,040	57,574	6.3
Western	41,082	22,313	18,769	6.4	42,912	23,521	19,391	6.7
Colombo	20,980	11,224	9,756	6.8	21,776	11,865	9,911	7.0
Gampaha	12,711	7,096	5,615	6.0	13,315	7,354	5,961	6.2
Kalutara	7,391	3,993	3,398	6.5	7,821	4,302	3,519	6.8
Central	17,876	9,855	8,021	6.8	17,888	9,956	7,932	6.7
Kandy	11,024	6,138	4,886	7.2	10,920	6,104	4,816	7.0
Matale	3,002	1,679	1,323	6.5	3,000	1,670	1,330	6.4
Nuwaraeliya	3,850	2,038	1,812	6.2	3,968	2,182	1,786	6.3
Southern	15,829	8,717	7,112	6.5	16,761	9,348	7,413	6.8
Galle	7,933	4,387	3,546	7.3	8,424	4,746	3,678	7.6
Matara	5,020	2,728	2,292	6.3	5,284	2,918	2,366	6.6
Hambantota	2,876	1,602	1,274	5.4	3,053	1,684	1,369	5.6
Northern	6,462	3,710	2,752	5.7	6,339	3,715	2,624	5.6
Jaffna	4,353	2,418	1,935	7.1	4,263	2,420	1,843	6.9
Kilinochchi	337	215	122	2.9	367	222	145	3.1
Mannar	389	243	146	3.7	396	238	158	3.8
Vavuniya	903	528	375	4.9	873	534	339	4.7
Mullativu	480	306	174	4.2	440	301	139	3.8
Eastern	6,858	4,045	2,813	4.5	7,188	4,125	3,063	4.7
Batticaloa	2,568	1,526	1,042	4.8	2,637	1,450	1,187	4.9
Ampara	2,791	1,675	1,116	4.6	2,921	1,714	1,207	4.7
Trincomalee	1,499	844	655	4.1	1,630	961	669	4.4
North-West	14,143	8,058	6,085	6.2	14,517	8,323	6,194	6.3
Kurunegala	10,426	5,891	4,535	6.6	10,669	6,099	4,570	6.7
Puttalam	3,717	2,167	1,550	5.4	3,848	2,224	1,624	5.5
North-Central	6,875	4,023	2,852	5.5	7,215	4,368	2,847	5.6
Anuradhapura	4,769	2,794	1,975	5.5	5,206	3,166	2,040	5.8
Polonnaruwa	2,106	1,229	877	5.5	2,009	1,202	807	5.2
Uva	7,210	4,134	3,076	5.8	7,136	4,098	3,038	5.6
Badulla	5,387	3,041	2,346	6.4	5,221	2,978	2,243	6.1
Monaragala	1,823	1,093	730	4.7	1,915	1,120	795	4.8
Sabaragamuwa	11,423	6,509	4,914	6.4	11,658	6,586	5,072	6.5
Ratnapura	6,298	3,643	2,655	6.1	6,472	3,679	2,793	6.1
Kegalle	5,125	2,866	2,259	6.9	5,186	2,907	2,279	6.9

* Provisional

Note: (a) District level & Province data based on the place of occurrence.

(b) District level & Province data based on the usual residence

Figure 3: Infant Mortality Rate (IMR) and Under Five Mortality Rate (U5MR) by Year, 2000-2013

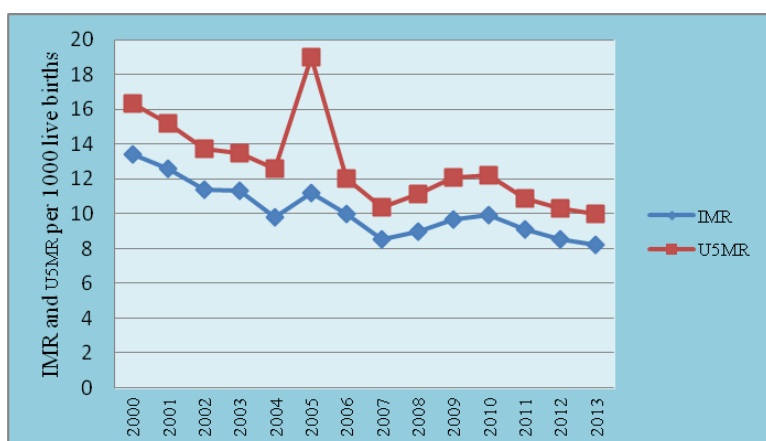


Table 6: Infant Mortality Rate, Under Five Mortality Rate and Crude Death Rate by Year, 2000-2015

Year	Infant Mortality Rate (IMR)	Under Five Mortality Rate(U5MR)	Crude Death Rate (CDR)
2000	13.4	16.3	6.1
2001	12.6	15.2	6.0
2002	11.4	13.7	5.9
2003	11.3	13.5	6.0
2004	9.8	12.6	5.9
2005	11.2	19.0	6.7
2006	10.0	12.0	5.9
2007	8.5	10.4	5.9
2008	9.0	11.1	6.1
2009	9.7	12.1	6.2
2010	9.9	12.2	6.3
2011*	9.1	10.9	5.9
2012*	8.5	10.3	6.0
2013*	8.2	10.0	6.2
2014*	NA	NA	6.2
2015*	NA	NA	6.3

Note: CBR is per 1000 population

IMR and U5MR are per 1000 live births

NA-Not available

*Provisional

The registered number of deaths during 2015 totaled 131,614 which is higher than 3856 in the previous year.

The death rate of 6.3 in 2015 was above the rate (6.2) for 2014.

The highest death rate 7.6 is reported from Galle district followed by Kandy (7.0) and Colombo (7.0) districts.

Figure 3 and Table 6 shows, declining trend of Under Five Mortality Rate (U5MR) and Infant Mortality Rate (IMR) during the period from 2000 to 2013. However, it is important to note that IMR and U5MR dramatically increased in 2005 due to Tsunami disaster and then again shows a decreasing trend.

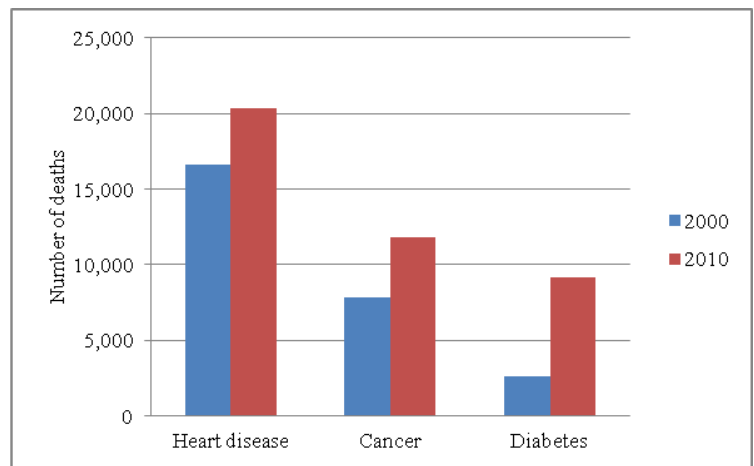
The Crude Death Rate (6.7) also increased dramatically in 2005 due to Tsunami disaster, and declined rapidly in the year 2006. Then increased again until year 2015 with the exception small downward trend in 2011.

Table 7: Number of Deaths by selected Causes

Year	Heart disease	Neoplasms	Diabetes mellitus
2000	16,614	7,842	2,584
2001	16,460	8,063	2,713
2002	17,314	7,986	2,783
2003	18,118	8,393	3,257
2004	18,279	9,127	3,865
2005	18,899	9,403	4,792
2006	17,404	10,386	8,516
2007	18,820	10,631	8,023
2008	NA.	NA.	NA
2009	19,649	11,286	9,362
2010	20,369	11,836	9,161

NA-Not available

Figure 4: Number of Deaths by selected Causes; 2000, 2010



Heart disease, cancers (Neoplasms) and diabetes were the broad disease groups of the international Classification of Diseases 10th Revision (ICD-10), with the largest number of deaths registered in 2010. Out of all deaths in the year 2010, heart diseases accounted for 20,369 deaths, while cancers accounted for 11,836 deaths and Diabetes accounted for 9,161 deaths.

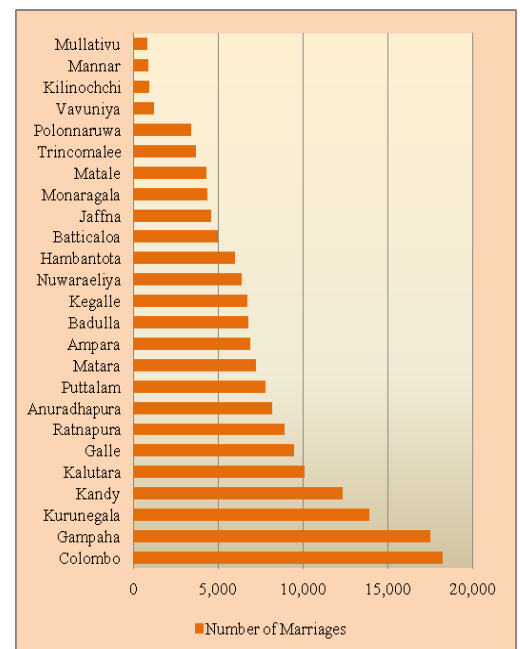
MARRIAGES.....

Table 8: Number of Registered Marriages by type of Marriage and Crude Marriage Rate 1995-2015

Year	Crude Marriage Rate	Registered Marriages						
		Total	General		Kandyan		Muslim	
			Total	%	Total	%	Total	%
1995	9.3	169,220	146,018	86.3	8,313	4.9	14,889	8.8
1996	9.5	173,873	149,358	85.9	9,202	5.3	15,313	8.8
1997	9.1	168,015	144,380	85.9	8,637	5.2	14,998	8.9
1998	9.9	186,568	161,458	86.5	8,310	4.5	16,800	9.0
1999	9.1	174,223	150,356	86.3	7,291	4.2	16,576	9.5
2000	10.2	194,217	168,127	86.6	8,336	4.3	17,754	9.1
2001	10.2	190,988	165,053	86.4	8,263	4.3	17,672	9.3
2002	10.4	197,589	171,996	87.0	7,817	4.0	17,776	9.0
2003	10.2	195,914	171,304	87.4	7,017	3.6	17,593	9.0
2004	10.0	193,317	169,106	87.5	6,476	3.3	17,735	9.2
2005	9.9	195,067	169,489	86.9	6,142	3.1	19,436	10.0
2006	9.9	196,817	173,513	88.2	4,690	2.4	18,614	9.4
2007	9.8	196,236	172,605	88.0	4,414	2.2	19,217	9.8
2008*	9.8	198,578	174,530	87.9	4,651	2.3	19,397	9.8
2009*	9.5	194,970	171,218	87.8	4,177	2.1	19,575	10.0
2010*	9.7	200,985	177,734	88.4	3,166	1.6	20,085	10.0
2011*	9.6	200,314	177,693	88.7	2,432	1.2	20,189	10.1
2012*	9.8	198,710	177,069	89.1	1,651	0.8	19,990	10.1
2013*	8.8	180,760	159,751	88.4	1,010	0.6	19,999	11.0
2014*	8.5	175,728	155,717	88.6	822	0.5	19,189	10.9
2015*	8.4	175,939	155,132	88.2	839	0.5	19,968	11.3

*Provisional

Figure 5: Number of Marriages by District -2015



The Crude Marriage Rate of 8.4 per 1000 population in 2015 was the lowest rate in the general declining in marriages since 2000.

Vital Statistics Unit

Registrar General's Department

234/A 3, Denzil Kobbakaduwa Mawatha, Baththaramulla, T.P.011-2889488, 011-2889489

Web site: www.rgd.gov.lk E-mail: rg@rgd.gov.lk, rgdept@sltnet.lk