



The Registrar General's Department was formed for registration of births, deaths and marriages of Sri Lankans, and legal documents pertaining to properties, with a view to safeguarding their fundamental rights. The Department was initially established in 1864 for the purpose of registration of land and entrusted with civil registration in 1867. Civil registration activities have been decentralized up to the Divisional Secretariat Level and accordingly District Registrar Division is operating in all 332 Divisional Secretariats. The collection, compilation, analysis, tabulation and dissemination of vital statistics are carried out by the Department of Census and Statistics.

MID YEAR POPULATION ESTIMATES.....

The Mid-Year population estimates refer to the population on 30th June of the reference year and are published annually by the Registrar General's Department.

The 2016 Mid-Year population estimates for Sri Lanka, build on the 2015 estimates, which are updated to account for population change during the period between 1st July 2015 and 30th June 2016.

The estimated Mid-Year population of Sri Lanka is 21.2 million in 2016 – an increase of 2, 37,000 people compared to the previous year.

Highest population of 2.4 million is reported from Colombo district whereas lowest is reported from Mullaitivu district.

Inside this Issue

Population estimates	1
Births	2
Deaths & Marriages	3-4

Table 1: Estimated Mid-Year population by District and Sex-2016*

District	Mid-Year Population ('000)		
	Total	Male	Female
Sri Lanka	21,203	10,265	10,938
Colombo	2,395	1,175	1,220
Gampaha	2,372	1,149	1,223
Kalutara	1,261	610	651
Kandy	1,434	684	750
Matale	508	245	263
Nuwara-eliya	748	358	390
Galle	1,102	528	574
Matara	845	405	440
Hambantota	637	313	324
Jaffna	602	283	319
Mannar	106	53	53
Vavuniya	182	90	92
Mullaitivu	95	47	48
Kilinochchi	122	60	62
Batticaloa	550	262	288
Ampara	691	334	357
Trincomalee	404	200	204
Kurunegala	1,676	805	871
Puttalam	801	388	413
Anuradhapura	905	442	463
Polonnaruwa	425	210	215
Badulla	854	410	444
Monaragala	479	238	241
Ratnapura	1,140	562	578
Kegalle	869	414	455

District figures based on usual residence

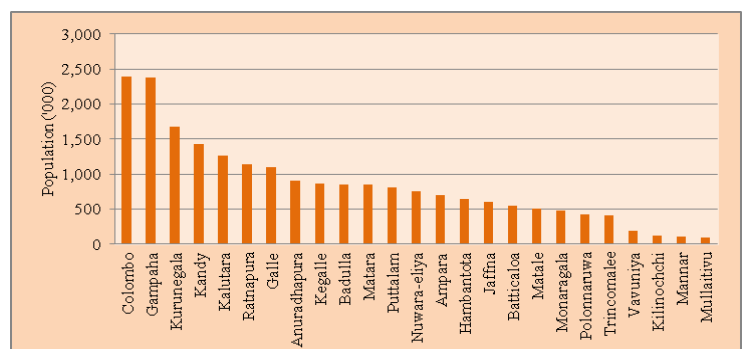
*-Provisional

Table 2: Estimated Mid-Year Population by Age Group and Sex 2016*

Age group	Mid -Year Population ('000)		
	Total	Male	Female
Total	21,203	10,265	10,938
0-4	1,818	917	901
5-9	1,821	919	902
10-14	1,709	864	845
15-19	1,713	854	859
20-24	1,596	773	823
25-29	1,617	774	843
30-34	1,707	830	877
35-39	1,467	714	753
40-44	1,415	689	726
45-49	1,339	644	695
50-54	1,270	605	665
55-59	1,108	521	587
60-64	955	443	512
65-69	659	295	364
70-74	429	189	240
75-79	295	121	174
80+	285	113	172

* Provisional

Figure1: Estimated Mid-Year Population by District-2016



BIRTHS.....

Table 3: Number of Live Births and Crude Birth Rate by Province, District and Sex -2015, 2016

Province/District	2015*			Crude Birth Rate (CBR) ^(b)	2016*			Crude Birth Rate (CBR) ^(b)
	Number of Live Births ^(a)				Number of Live Births ^(a)			
	Total	Male	Female		Total	Male	Female	
Sri Lanka	334,821	169,918	164,903	16.0	331,073	169,177	161,896	15.6
Western	90,454	45,720	44,734	13.8	88,201	45,090	43,111	13.4
Colombo	50,894	25,574	25,320	14.4	49,993	25,858	24,135	14.0
Gampaha	24,271	12,320	11,951	13.1	23,957	12,053	11,904	12.8
Kalutara	15,289	7,826	7,463	14.2	14,251	7,179	7,072	13.3
Central	46,531	23,741	22,790	17.2	45,630	23,340	22,290	16.7
Kandy	28,099	14,365	13,734	17.5	26,587	13,647	12,940	16.4
Matale	9,342	4,729	4,613	17.4	9,244	4,664	4,580	16.9
Nuwaraeliya	9,090	4,647	4,443	16.5	9,799	5,029	4,770	17.0
Southern	41,194	20,908	20,286	16.5	40,712	20,831	19,881	16.1
Galle	19,220	9,686	9,534	16.4	18,905	9,622	9,283	15.9
Matara	11,224	5,780	5,444	14.2	11,075	5,746	5,329	13.9
Hambantota	10,750	5,442	5,308	19.7	10,732	5,463	5,269	19.3
Northern	16,368	8,216	8,152	14.9	16,745	8,654	8,091	15.1
Jaffna	7,855	3,989	3,866	13.6	8,264	4,380	3,884	14.1
Mannar	1,677	858	819	18.1	1,744	915	829	18.5
Vavuniya	3,690	1,795	1,895	17.6	3,416	1,707	1,709	16.1
Mullativu	1,120	550	570	12.2	874	439	435	10.5
Kilinochchi	2,026	1,024	1,002	16.9	2,447	1,213	1,234	19.5
Eastern	30,297	15,514	14,783	19.4	30,534	15,605	14,929	19.2
Batticaloa	9,210	4,740	4,470	17.3	9,167	4,618	4,549	16.9
Ampara	13,297	6,773	6,524	20.5	13,538	6,950	6,588	20.5
Trincomalee	7,790	4,001	3,789	20.5	7,829	4,037	3,792	20.2
North-West	36,951	18,888	18,063	16.3	36,614	18,698	17,916	16.0
Kurunegala	23,231	11,884	11,347	15.4	23,307	11,955	11,352	15.2
Puttalam	13,720	7,004	6,716	18.4	13,307	6,743	6,564	17.6
North-Central	22,414	11,397	11,017	17.2	22,555	11,623	10,932	17.0
Anuradhapura	15,376	7,852	7,524	17.3	15,423	7,898	7,525	17.1
Polonnaruwa	7,038	3,545	3,493	16.9	7,132	3,725	3,407	16.8
Uva	22,141	11,167	10,974	17.0	22,524	11,465	11,059	17.0
Badulla	15,076	7,610	7,466	16.2	15,817	8,044	7,773	16.8
Monaragala	7,065	3,557	3,508	18.4	6,707	3,421	3,286	17.5
Sabaragamuwa	28,471	14,367	14,104	15.9	27,558	13,871	13,687	15.3
Ratnapura	18,866	9,576	9,290	16.7	18,155	9,181	8,974	15.9
Kegalle	9,605	4,791	4,814	14.9	9,403	4,690	4,713	14.4

Note: (a) District level & Province data based on the place of occurrence.

* Provisional

(b) District level & Province data based on the usual residence.

Figure 2: Live Births registered by Month - 2016

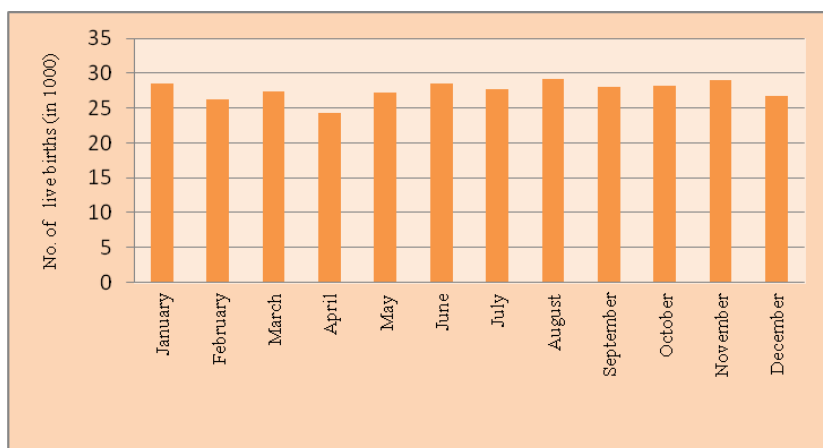


Table 4: Live Births registered by Month and Sex - 2016*

Month	Total		
	Total	Male	Female
January	28,484	14,386	14,098
February	26,187	13,533	12,654
March	27,308	13,999	13,309
April	24,303	12,425	11,878
May	27,273	13,748	13,525
June	28,552	14,741	13,811
July	27,730	14,221	13,509
August	29,222	14,911	14,311
September	28,081	14,304	13,777
October	28,222	14,313	13,909
November	28,953	14,763	14,190
December	26,758	13,833	12,925
Total	331,073	169,177	161,896

*Provisional

DEATHS.....

Table 5: Number of Deaths and Crude Death Rate by Province, District and Sex -2015, 2016

Province /District	2015*			Crude Death Rate (CDR) (b)	2016*			Crude Death Rate (CDR) (b)
	No.of Deaths (a)				No.of Deaths (a)			
	Total	Male	Female		Total	Male	Female	
Sri Lanka	131,614	74,040	57,574	6.3	130,765	73,056	57,709	6.2
Western	42,912	23,521	19,391	6.7	43,181	23,646	19,535	6.6
Colombo	21,776	11,865	9,911	7.0	22,395	12,331	10,064	7.1
Gampaha	13,315	7,354	5,961	6.2	13,382	7,292	6,090	6.2
Kalutara	7,821	4,302	3,519	6.8	7,404	4,023	3,381	6.5
Central	17,888	9,956	7,932	6.7	17,477	9,668	7,809	6.5
Kandy	10,920	6,104	4,816	7.0	10,701	5,831	4,870	6.8
Matale	3,000	1,670	1,330	6.4	2,889	1,706	1,183	6.1
Nuwaraeliya	3,968	2,182	1,786	6.3	3,887	2,131	1,756	6.1
Southern	16,761	9,348	7,413	6.8	16,024	8,587	7,437	6.4
Galle	8,424	4,746	3,678	7.6	7,957	4,242	3,715	7.1
Matara	5,284	2,918	2,366	6.6	5,109	2,709	2,400	6.3
Hambantota	3,053	1,684	1,369	5.6	2,958	1,636	1,322	5.3
Northern	6,339	3,715	2,624	5.6	6,651	3,850	2,801	5.8
Jaffna	4,263	2,420	1,843	6.9	4,526	2,505	2,021	7.3
Mannar	396	238	158	3.8	424	249	175	3.9
Vavuniya	873	534	339	4.7	802	500	302	4.2
Mullativu	440	301	139	3.8	445	293	152	3.8
Kilinochchi	367	222	145	3.1	454	303	151	3.6
Eastern	7,188	4,125	3,063	4.7	7,762	4,769	2,993	4.9
Batticaloa	2,637	1,450	1,187	4.9	3,133	2,027	1,106	5.6
Ampara	2,921	1,714	1,207	4.7	2,940	1,775	1,165	4.6
Trincomalee	1,630	961	669	4.4	1,689	967	722	4.4
North-West	14,517	8,323	6,194	6.3	14,025	7,842	6,183	6.1
Kurunegala	10,669	6,099	4,570	6.7	10,147	5,662	4,485	6.3
Puttalam	3,848	2,224	1,624	5.5	3,878	2,180	1,698	5.5
North-Central	7,215	4,368	2,847	5.6	6,616	3,949	2,667	5.1
Anuradhapura	5,206	3,166	2,040	5.8	4,596	2,722	1,874	5.1
Polonnaruwa	2,009	1,202	807	5.2	2,020	1,227	793	5.1
Uva	7,136	4,098	3,038	5.6	7,343	4,252	3,091	5.7
Badulla	5,221	2,978	2,243	6.1	5,331	3,065	2,266	6.2
Monaragala	1,915	1,120	795	4.8	2,012	1,187	825	4.9
Sabaragamuwa	11,658	6,586	5,072	6.5	11,686	6,493	5,193	6.4
Ratnapura	6,472	3,679	2,793	6.1	6,539	3,705	2,834	6.1
Kegalle	5,186	2,907	2,279	6.9	5,147	2,788	2,359	6.8

Note: (a) District level & Province data based on the place of occurrence.
(b) District level & Province data based on the usual residence.

* Provisional

The registered number of deaths during 2016 totaled 130,765 which is lower than 849 in the previous year.

The Crude Death Rate (CDR) defined as number of deaths registered per 1000 population in a specific area.

The Crude Death Rate of 6.2 in 2016 was below the rate (6.3) for 2015.

Figure 3 shows Crude Death Rate by year, 2000-2016. It can be seen from that chart survivorship is higher for women than for men.

However, it is important to note that Crude Death Rate increased dramatically in 2005 due to Tsunami disaster, and declined rapidly in the year 2006. Then increased again until year 2015 with the exception small downward trend in 2011.

According to the figure 4 in 2016 depicts that Crude Death Rate by District, the highest death rate (7.3) can be seen from Jaffna district while lowest is reported from Killinochchi district(3.6).

Figure 3: Crude Death Rate by Year, 2000-2016

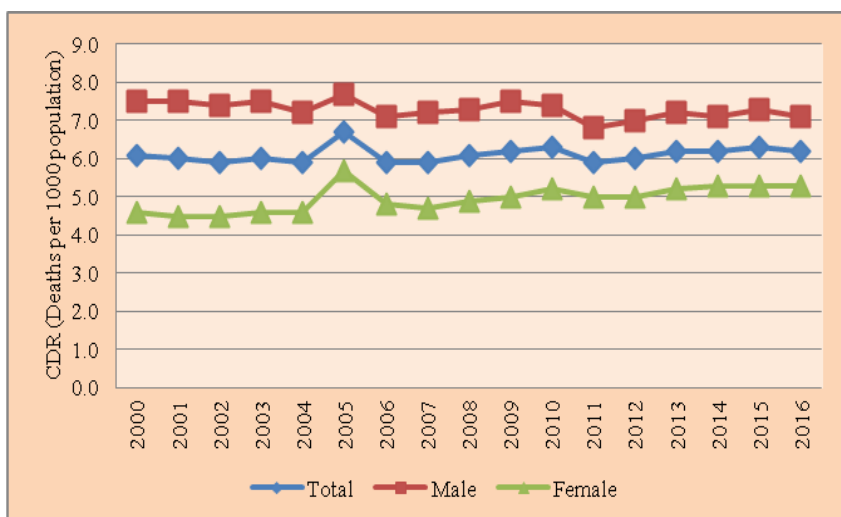


Figure 4: Crude Death Rate (CDR) by District-2016

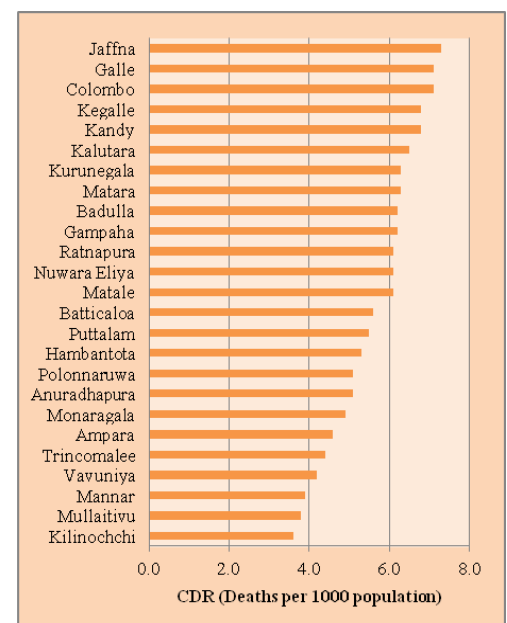


Table 6: Number of Deaths and leading causes of death by sex, 2010 and 2013

Cause of death	2010			2013		
	Total	Male	Female	Total	Male	Female
Septicemia	2,075	1,170	905	2,627	1,446	1,181
Remainder of malignant neoplasms	4,114	2,252	1,862	4,874	2,723	2,151
Diabetes mellitus	9,161	4,644	4,517	10,093	5,102	4,991
Remainder of diseases of the nervous system	9,711	5,053	4,658	10,507	5,362	5,145
Hypertensive diseases	7,980	4,001	3,979	6,482	3,118	3,364
Ischemic heart diseases	5,943	3,604	2,339	6,603	4,065	2,538
Other heart diseases	14,426	8,998	5,428	14,766	9,167	5,599
Cerebrovascular diseases	3,722	2,207	1,515	3,488	2,048	1,440
Pneumonia	2,826	1,752	1,074	3,070	1,865	1,205
Chronic lower respiratory diseases	7,894	4,684	3,210	7,538	4,553	2,985
Remainder of diseases of the respiratory system	1,191	745	446	1,613	998	615
Diseases of the liver	2,914	2,417	497	2,646	2,062	584
Remainder of diseases of the genitourinary system	3,608	2,463	1,145	4,282	2,906	1,376
Certain conditions originating in the perinatal period	2,056	1,125	931	1,743	977	766
Transport accidents	2,615	2,132	483	2,451	1,984	467
Intentional self-harm	3,562	2,698	864	3,164	2,440	724
All other external causes	10,186	6,736	3,450	1,973	1,438	535

Cause of death are classified and grouped according to the current revision of the International Classification of Diseases (ICD-10) in which regulations and recommendations relevant to the certification of cause of death and preparation of statistics have been published

MARRIAGES.....

Table 7: Number of Marriages Registered by Type of Marriage and Crude Marriage Rate 2000-2016

Year	Crude Marriage Rate	Registered Marriages							
		Total	General		Kandyan		Muslim		
			Total	%	Total	%	Total	%	
2000	10.2	194,217	168,127	86.6	8,336	4.3	17,754	9.1	
2001	10.2	190,988	165,053	86.4	8,263	4.3	17,672	9.3	
2002	10.4	197,589	171,996	87.0	7,817	4.0	17,776	9.0	
2003	10.2	195,914	171,304	87.4	7,017	3.6	17,593	9.0	
2004	10.0	193,317	169,106	87.5	6,476	3.3	17,735	9.2	
2005	9.9	195,067	169,489	86.9	6,142	3.1	19,436	10.0	
2006	9.9	196,817	173,513	88.2	4,690	2.4	18,614	9.4	
2007	9.8	196,236	172,605	88.0	4,414	2.2	19,217	9.8	
2008	9.8	198,578	174,530	87.9	4,651	2.3	19,397	9.8	
2009	9.5	194,970	171,218	87.8	4,177	2.1	19,575	10.0	
2010	9.7	200,985	177,734	88.4	3,166	1.6	20,085	10.0	
2011*	9.6	200,314	177,693	88.7	2,432	1.2	20,189	10.1	
2012*	9.8	198,710	177,069	89.1	1,651	0.8	19,990	10.1	
2013*	8.8	180,760	159,751	88.4	1,010	0.6	19,999	11.0	
2014*	8.5	175,728	155,717	88.6	822	0.5	19,189	10.9	
2015*	8.4	175,939	155,132	88.2	839	0.5	19,968	11.3	
2016*	8.2	173,990	152,033	87.4	491	0.3	21,466	12.3	

*Provisional

According to the Table 7, the total of 173,990 marriages registered in 2016, a decrease of 1.1 percent compared with 2015.

There were 152,033 general marriages in 2016, accounting for 87.4% of all marriages.

There has been a continual increase in the Muslim marriages since 2000 which accounts 12.3% of all marriages in 2016.

The Crude Marriage Rate of 8.2 per 1000 population in 2016 was the lowest rate reported since 2000.

Vital Statistics Unit
Registrar General's Department

234/A 3, Denzil Kobbakaduwa Mawatha, Baththaramulla, T.P.011-2889488, 011-2889489

Web site: www.rgd.gov.lk E-mail: rg@rgd.gov.lk, rgdept@sltnet.lk