



School Census - 2008

Preliminary Report



Ministry of Education
Sri Lanka

Prepared by the Statistics Branch

PREFACE

Accurate and updated information is an essential tool in decision making related to policy formulation. The Statistics Branch of the Ministry of Education has been carrying out annual school censuses for the past four decades, which has become the major source of education information. Information gathered is expected to help the planners to diagnose past strengths and weaknesses and to use as a basis for the development and quality improvement of the existing education system.

The first section of this report is prepared using the summary information collected through the annual school census. The second section presents selected MDG indicators on education which can be prepared using the data collected through the Annual School Census. Calculation of education indicators is also useful in monitoring the development and improvement of quality in the education system in Sri Lanka. One of the emphases in this publication is on regional comparison of education indicators. All the indicators are given by several subcategories: National, Province and district and sex where ever possible.

This major annual task has been successfully carried out with active corporation and contribution of various officers at all levels in the general education system. My appreciation goes to the officers of the Provincial Department of Education, Zonal Education officers, Divisional Education officers and the Principals of all the schools for their cooperation given to make this process successful. The contribution given by the Principals of Private Schools and heads of Special Schools, Teacher Training Colleges, National Colleges of Education and Pirivenas also greatly appreciated. I would like to extend my gratitude to the Register General Office, which provide the population information to calculate indicators.

This publication has been organized and prepared by the Statistics Branch of this Ministry. I wish to thank them for their hard work in bringing out this publication.

I hope the information given in this publication would be of immense use to policy makers, planners in education and the researchers in educational pursuits.


M.M.N.D. Bandara
Secretary

Ministry of Education
"Isurupaya"
Battaramulla.

7th May 2008

Contents

	Page No
Preface	i
Contents	ii
List of Tables	iii-iv
List of Figures	v
Basic information in Government schools	01
Introduction	03
Administrative system of education	03
Section I:	04
Preliminary findings of Annual School Census – 2008	04
Information about government schools	04
Functional grade wise comparison of basic information	04
Comparison of basic information by type of school	05
Schools by functional grade	06
Schools by medium of instruction	07
Schools by size of student population	07
Student information	08
Students by medium of study	08
Teacher information	09
Teachers by major qualification category	09
Gross student teacher ratios in government schools	10
Student teacher ratio by various types school	10
Student teacher ratio in 1 teacher and 2 teacher schools	11
Student teacher ratio by appointment category of teachers	11
Grade one new admissions	13
Admissions to Grade one by Gender and medium of study.	13
Section II:	46
Millennium Development Goals (MDG) Indicators on Education in Sri Lanka	46
Definitions, methods of computations and other information of MDG indicators on Education	48
Indicator 6 : Net enrolment ratio in primary education (NER)	48
Indicator 6b : Gross enrolment ratio in primary education (GER)	50
Indicator 7 : Proportion of pupils starting Grade 1 who reach grade 5	
Survival rate to Grade 5 (SR)	51
Indicator 7a : Primary completion rate (PR)	52
Indicator 9 : Ratio of Girls to boys in primary, secondary and tertiary education –Gende Parity Index (GPI)	53
Trends in MDG indicators on Education	54
Appendix: Education Zones, Education Divisions by District	79-88

List of Tables

Section I	Page No
1.1: Districts, Education Zones and Education Divisions by province	03
1.2: Schools, Students, Teachers and Grade 1 admissions by functional grade of school	04
1.3: Schools, Students, Teachers in National, Navodya, Isuru and other schools	05
1.4: Schools by functional grade and province	06
1.5: Number and percentage of schools by number of teachers	06
1.6: Schools by medium of instruction and province	07
1.7: Schools by size of student population and province	07
1.8: Students by medium of study and province	08
1.9: Teachers by major qualification category and province	09
1.10: STR by functional grade, sex of students and medium of instructions	10
1.11: Number of 1 teacher and 2 teacher schools by student teacher ratio	11
1.12: Student teacher ratio (STR) by province	11
1.13: Grade 1 new admissions by medium, gender and province	13
1: Functioning government schools by functional grade and district	14
2: Functioning schools by sex of students, medium of instruction and district	15-16
3: Government schools by grade span and district	17
4: Functioning schools by medium of instruction, sex of students and functional grade	18
5: Students by gender, medium of study and functional grade of school	18
6: National, Navodya and Isuru schools and their student enrolment by district	19
7: students by gender, medium of study and district	20
8: Students by school grade and district	21-22
9: Government schools and their student enrolment by functional grade and district	23
10: Schools by size of student population and district	24
11: Schools by functional grade, sex of students and size of student population	25
12: Schools by medium of instruction and size of student population	26
13: Teachers by category of appointment & district	27
14: Government schools and teachers by functional grade of school and district	28
15: Government schools by size of teacher population and district	29
16: Gross pupil teacher ratio by category of teacher and district	30
17: Gross pupil teacher ratio by functional grade of school, sex of students and district	31
18: Gross pupil teacher ratio by medium of instruction of school and district	32
19: Schools by gross pupil teacher ratio and district	33
20: Schools by functional grade, sex of students and gross pupil teacher ratio group	34
21: Schools by medium of instructions & gross pupil teacher ratio group	35
22: Schools by gross pupil teacher ratio & number of teachers in school	36
23: Grade one new admissions by gender medium of study and district	37
24: Grade one new admissions by gender functional grade of school & district	38
25: Schools by functional grade,sex of students and size of grade one new admissions	39
26: Schools by medium of instructions and size of grade one new admissions	40
27: schools by size of grade 1 new admissions and district	41
28: Private schools and their students and teacher	42
29: Pirivenas and their students and teachers	43
30: Teacher Training College (TTCs) & National Colleges of Education (NCOE)	44

Section II	Page No
2.1: Trends in NER at primary level	54
2.2: Trends in GER at primary level	55
2.3: Trends in SR to grade 05	57
2.4: Trends in PCR	58
2.5: Trends in GPI at primary and secondary levels	59
2.6: Trends in GPI by streams in A/L classes	61
1: Net enrolment rates for the primary education level by province and district	62-63
2: Gross enrolment rates for the primary education level by province and district	64-65
3: Survival rates to Grade 5 by province and district	66-67
4: Primary completion rates by province and district	68-69
5: Gender parity index for primary education level by province and district	70
6: Gender parity index for junior secondary education level by province and district	71
7: Gender parity index for secondary education level by province and district	72
8: Gender parity index by streams and all A/L by province and district	73-78

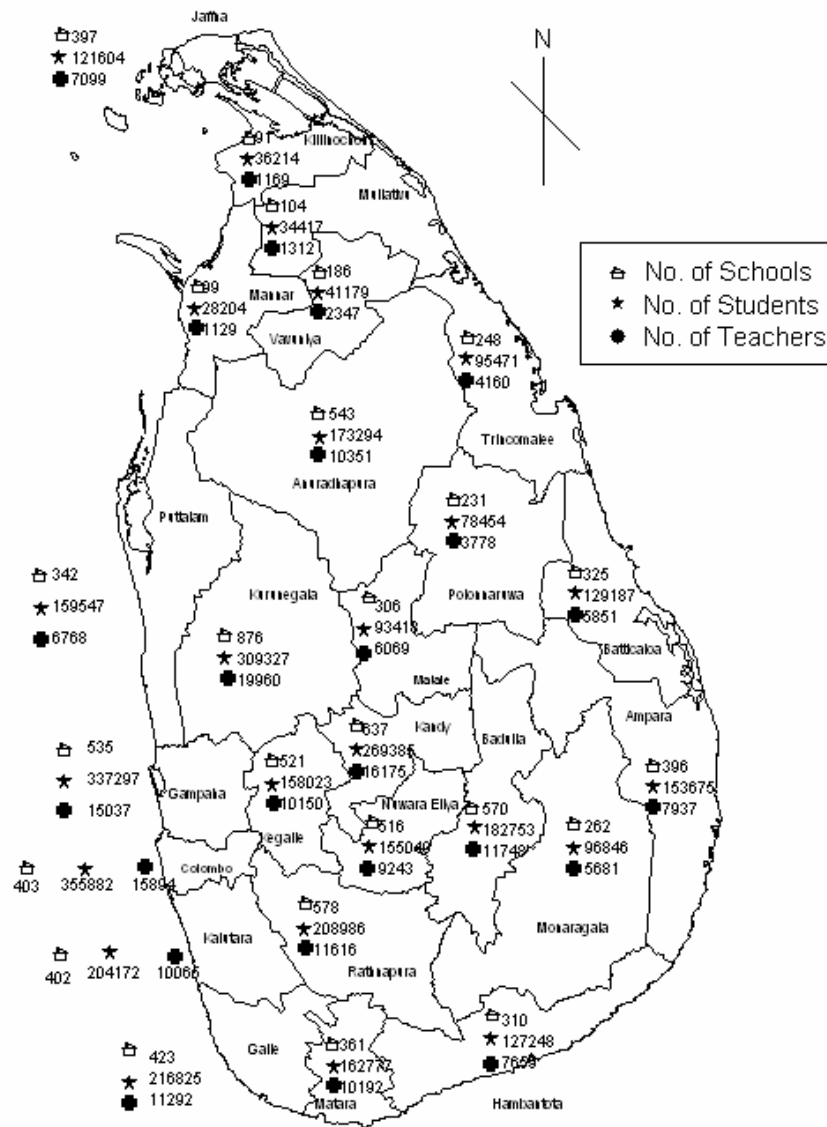
List of Figures

Section I	Page No
1.1: Distribution of school information by type	05
1.2: Schools by size of student population	08
1.3: Students by medium of study	09
1.4: Percentage of teachers by appointment category	10
1.5: Grade 1 new admission by gender and province	13
Section II	
2.1: Net Enrolment ratio in primary education by sex	54
2.2: Gross enrolment rate in primary education by sex	55
2.3: Net and Gross enrolment rates in primary education for boys	56
2.4: Net and Gross enrolment rates in primary education for girls	56
2.5: Survival rate to Grade 5 by sex	57
2.6: Primary completion rate by sex	58
2.7: Gender parity in primary education level (Grade 1-5)	59
2.8: Gender parity in junior secondary education level (Grade 6-11)	60
2.9: Gender parity in secondary education level (Grade 6-13)	60
2.10: Gender parity in A/L by stream and total	61

Basic Information in Government schools

Schools		Primary cycle (Grade 1-5 & Special Education)	1,631,633
Schools	9,662	Junior Secondary cycle (Grade 6-9)	1,259,359
1AB schools	698	Senior Secondary cycle (Grade 10-11)	638,033
1C schools	1,937	Collegiate cycle (Grade 12-13)	400,197
Type 2 schools	4,166		
Type 3 schools	2,861		
Medium of instruction		Teachers	212,683
Sinhala only	6,388	Graduate teachers	74,218
Tamil only	2,791	Trained teachers	127,382
Sinhala & Tamil	41	Untrained teachers	7,322
Sinhala & English	305	Trainee teachers	2,659
Tamil & English	109	Other teachers	1,102
Sinhala, Tamil and English	28		
Student Population		School Type	
1-50 students	1,554	1AB schools	57,138
51-100 Students	1,419	1 C schools	67,368
101-150 students	1,080	Type 2 schools	67,971
151-200 students	860	Type 3 schools	20,206
201-500 students	2,434		
501-1000 students	1,315	Student teacher ratio	18
1001-1500 students	487	Students/Graduate teacher ratio	53
1501-2000 students	216	Student/trained teacher ratio	31
2001-3000 students	208	Student/untrained teacher ratio	355
3001-4000 students	59		
4001 students & above	30		
Teachers		1AB schools	23
1 teacher schools	120	1C schools	19
2 teacher schools	209	Type 2 schools	15
3-9 teachers	2,616	Type 3 schools	17
10-25 teachers	4,234	Boys schools	24
26-50 teachers	1,625	Girls schools	24
51-100 teachers	671	Mixed schools	18
101 teachers & above	187		
National Schools	330	Grade 1 admissions	330,448
Navodya Schools	515	1AB schools	69,979
Isuru	40	1C schools	97,936
		Type 2 schools	94,633
Pupils	3,929,234	Type 3 schools	67,900
1AB schools	1,323,925	Male	167,221
1C schools	1,276,870	female	163,227
Type 2 schools	988,408		
Type 3 schools	340,031	Sinhala medium	241,068
Male students	1,950,041	Tamil medium	89,360
Female students	1,979,193	English medium	20

No. of schools, students, and teachers
by districts - 2008



Prepared by Statistics Branch MOE

Introduction

The Ministry of Education has conducted an uninterrupted series of annual school censuses for the last 40 years and this has become the major data source of education data in the country. Much information has been collected from government schools about students, teachers, non-academic staff and the physical facilities available in the schools. Simultaneous to the annual school census of government schools, separate censuses are carried out to collect information from Private Schools, Pirivenas, Teacher Training Colleges and National Colleges of Education. The collected information has been processed and made available annually to the researchers, policy makers and the planners for their researches, planning and development work. This report is a step in the process of making the information available to such planners and the other data users.

The first part of this report presents the preliminary findings of the School Census 2008, which was carried out as at 1st June 2008. Information about the schools, Students and teachers in government schools are used in the preparation of this part. Information related to Private Schools, Pirivenas, Teacher Training Colleges and National Colleges of Education are also included in this section. Provincial and district level information which are widely used by the data users has been prepared.

Sri Lanka along with other UN member states, committed to achieve the Millennium Development Goals (MDG) by the year 2015. there are eight MDGs with 18 targets. For monitoring towards these targets about 48 indicators have been recommended. All these MDGs are inter related and the aim of satisfying these MDGs is to improve the living conditions of the people in the country. Finally it is expected a sustainable social and economic development in the country.

The second part of this report is a statistical review of a set of selected education indicators for monitoring progress towards 2nd and 3rd Millennium Development Goals (MDG). It has been identified four indicators to measure the targets and the progress of the second goal. Two indicators related on education for monitoring progress of goal three are identified. This report contains the information of selected four MDG indicators which can be calculated from the data collected through the Annual School Census. These indicators have been calculated for the years which are the data available in the period 1991-2007. The population information which is needed to calculate these indicators is been given by the Statistics Branch of Register General Office (RGO). Information about education indicators is been widely used by the policy makers, planners, researchers, international agencies, private companies and for the general public.

Administrative system of education

Table 1.1: Districts, Education Zones and Education Divisions by province

Province	No of districts	No of education zones	No of education divisions
Western	3	11	38
Central	3	15	39
Southern	3	11	39
Northern	5	12	33
Eastern	3	13	44
North Western	2	8	31
North Central	2	8	30
Uva	2	8	23
Sabaragamuwa	2	7	27
Sri Lanka	25	93	304

Section I

Preliminary findings of Annual School Census - 2008

Three schedules have been used to collect the information from government schools.

- SC1 schedule : used to collect the information from schools. Information about schools, students, physical facilities available in the school and non-academic staff has been collected from this schedule.
- FT schedule : teacher form (FT) has been used to collect information about teachers in the school.
- SC/SS schedule : school summary form used to collect variety of information which is urgently needed.

Divisional Directors prepare division wise summaries based on forms completed by schools. Both school summaries completed by schools and division summaries completed by divisional directors are used in the preparation of this section.

Two schedules, School schedule and Teacher form are used to collect information from Private schools in the country. Information of Pirivenas, Teacher Training Colleges and National Colleges of Education has been collected using separate questionnaires prepared by the Statistics Branch of MOE. Information collected from Private Schools, Pirivenas, Teacher Training Colleges and National Colleges of Education also used to prepare this report.

Information about government schools

Functional grade wise comparison of basic information

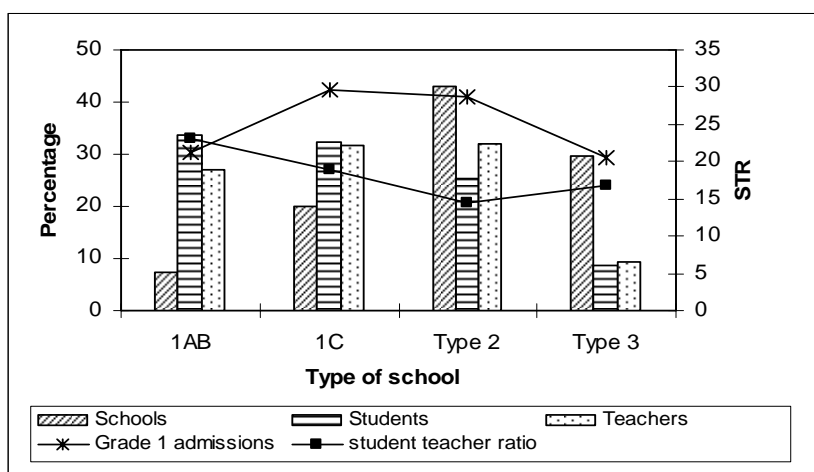
Table 1.2: Schools, Students, Teachers and Grade 1 admissions by functional grade of school

Type of school	Schools	Students	Teachers	Grade 1 admissions	Student teacher ratio
1AB	698	1,323,925	57,138	69,979	23
	7.2	33.7	26.9	21.2	
1C	1,937	1,276,870	67,368	97,936	19
	20.0	32.5	31.7	29.6	
Type2	4,166	988,408	67,971	94,633	15
	43.1	25.2	32.0	28.6	
Type3	2,861	340,031	20,206	67,900	17
	29.6	8.7	9.5	20.5	
Total	9,662	3,929,234	212,683	330,448	18
	100.0	100.0	100.0	100.0	

- 1 AB - School having Advanced Level Science stream classes
- 1 C - School having Advanced Level Arts and /or Commerce streams but no Science stream
- Type 2 - Schools having classes only up to grade 11
- Type 3 - Schools having classes only up to grade 8

There are 9,662 government schools in Sri Lanka. 12 new schools have been opened after the month of June 2007 and have been included in this census. 18 schools which were temporary closed in June 2007 have now been re-opened and 38 schools which were functioning in June 2007 have been temporary closed.

Graph 1.1: Distribution of school information by type



Gross student teacher ratio is the number of students per teacher (including academic staff involved in administration and supervision)

$$\text{Gross STR} = \frac{\text{No. of Students}}{\text{No. of teachers}}$$

Comparison of basic information by type of school

Table 1.3: Schools, Students, Teachers in National, Navodya, Isuru and other schools

Type of school	Schools		Students		Teachers	
	No.	%	No.	%	No.	%
National schools	330	3.4	738,267	18.8	31,747	14.9
Navodya schools	515	5.3	543,444	13.8	25,187	11.8
Isuru schools	40	0.4	43,176	1.1	1,938	0.9
Other schools	8,777	90.8	2,604,347	66.3	153,811	72.3
All schools	9,662	100.0	3,929,234	100.0	212,683	100.0

Although the national schools represent a mere 3.4 percent of all schools, almost one fifth of students are in these schools. Navodya schools which were selected to be develop under DSD project in year 2001 were started with the intention of reducing the existing high demand for the grade 1 admissions in the national schools. There were 515 Navodya schools and about 15 percent of Sri Lankan children are attending these schools. Isuru schools which were selected to be developed under the secondary schools development project, were started in 2007 to give better secondary education for the qualified students from Grade 5 Scholarship Examination. The classes Grade 6 and above are available in these schools.

Schools by functional grade

Table 1.4: Schools by functional grade and province

Province	1AB	1C	Type2	Type3	Total
Western	162	260	617	301	1,340
Central	94	326	529	510	1,459
Southern	103	255	529	207	1,094
Northern	63	122	302	390	877
Eastern	58	164	366	381	969
North Western	74	275	623	246	1,218
North Central	31	154	337	252	774
Uva	53	182	367	230	832
Sabaragamuwa	60	199	496	344	1,099
Sri Lanka	698	1,937	4,166	2,861	9,662

The highest percentage of 1AB and 1C schools are in the Western province (23.2%) and Central province (16.8%) respectively. Almost one third of the schools have classes only up to Grade 5 or Grade 8.

Table 1.5: No. and Percentage of schools by no. of teachers

No. of teachers	No. of schools	%
1 teacher	120	1.2
2 teachers	209	2.2
3-5 teachers	1,165	12.1
6-10 teachers	1,719	17.8
11-15 teachers	1,721	17.8
16-20 teachers	1,453	15.0
21-50 teachers	2,417	25.0
50-100 teachers	671	6.9
>100 teachers	187	1.9
Total	9,662	100.0

From all schools in the country, about 15 percent of schools have less than 5 teachers while around 10 percent schools have more than 50 teachers. One fourth of total schools have 21-50 students.

Schools by medium of instruction

Table 1.6: Schools by medium of instruction and province

Province	Sinhala	Tamil	Sinhala, Tamil & English				Total
			Sinhala & Tamil	Sinhala & English	Tamil & English	Sinhala, Tamil & English	
Western	1,107	109	15	88	9	12	1,340
Central	871	512	15	37	13	11	1,459
Southern	1,002	36	4	49	2	1	1,094
Northern	15	822	0	0	40	0	877
Eastern	238	697	1	3	30	0	969
North Western	1,013	150	4	46	4	1	1,218
North Central	671	86	2	15	0	0	774
Uva	609	192	0	27	3	1	832
Sabaragamuwa	862	187	0	40	8	2	1,099
Sri Lanka	6,388	2,791	41	305	109	28	9,662

From the total schools, 9179 schools (95.0 percent) are single medium schools while in 28 schools students learn in all three media i.e. Sinhala, Tamil and English. Three or more subjects for at least one grade are taught in English medium in 442 schools distributed through out the island.

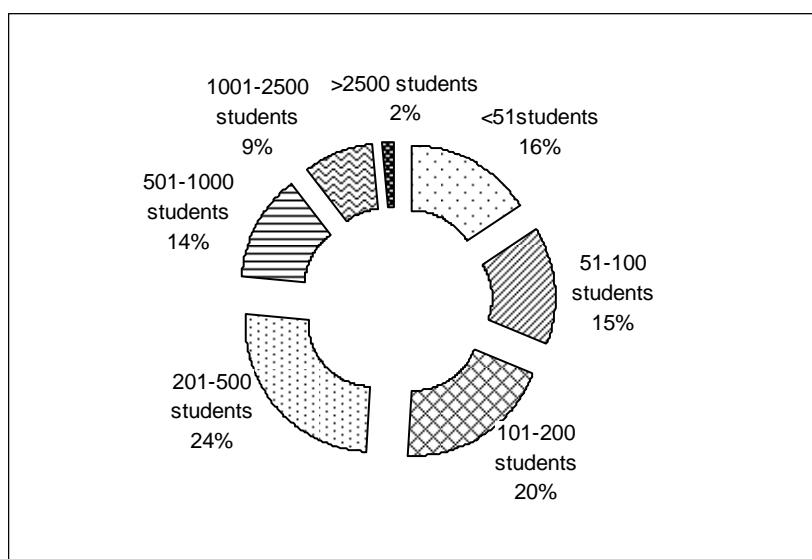
Schools by size of student population

Table 1.7: Schools by size of student population and province

Province	Schools with							Total
	<50 students	50-100 students	101-200 Students	201-500 students	501-1000 students	1001-2500 students	>2500 students	
Western	103	127	217	374	234	223	62	1,340
Central	253	241	305	350	186	107	17	1,459
Southern	123	178	231	286	135	112	29	1,094
Northern	177	149	170	209	123	46	3	877
Eastern	108	136	199	266	172	85	3	969
North Western	202	177	277	292	154	96	20	1,218
North Central	173	130	138	192	92	41	8	774
Uva	162	110	185	206	103	60	6	832
Sabaragamuwa	253	171	218	259	116	64	18	1,099
Sri Lanka	1,554	1,419	1,940	2,434	1,315	834	166	9,662
%	16.1	14.7	20.1	25.2	13.6	8.6	1.7	100.0

16.1 percent of schools have less than 51 students and exactly half of the schools in the country have less than 200 schools.

Graph 1.2: Schools by size of student population



Student information

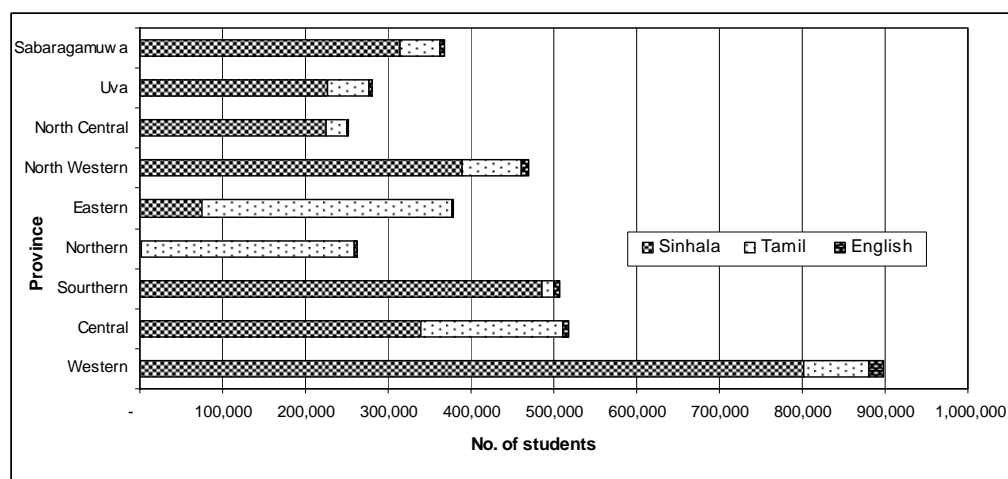
Students by medium of study

Table 1.8: Students by medium of study and province

Province	Medium of study			Total
	Sinhala	Tamil	English	
Western	800,967	79,462	16,922	897,351
Central	338,617	172,192	7,043	517,852
Southern	486,242	14,051	6,557	506,850
Northern	2,325	257,046	2,247	261,618
Eastern	74,885	301,339	2,109	378,333
North Western	389,022	71,302	8,550	468,874
North Central	224,177	25,804	1,767	251,748
Uva	227,202	49,830	2,567	279,599
Sabaragamuwa	314,870	46,763	5,376	367,009
Sri Lanka	2,858,307	1,017,789	53,138	3,929,234
%	72.7	25.9	1.4	100.0

Table shows that 1.4 percent of students in Sri Lanka are studying in English medium and about one third of them are in the Western province.

Graph 1.3: Students by medium of study



Teacher information

Teachers by major qualification category

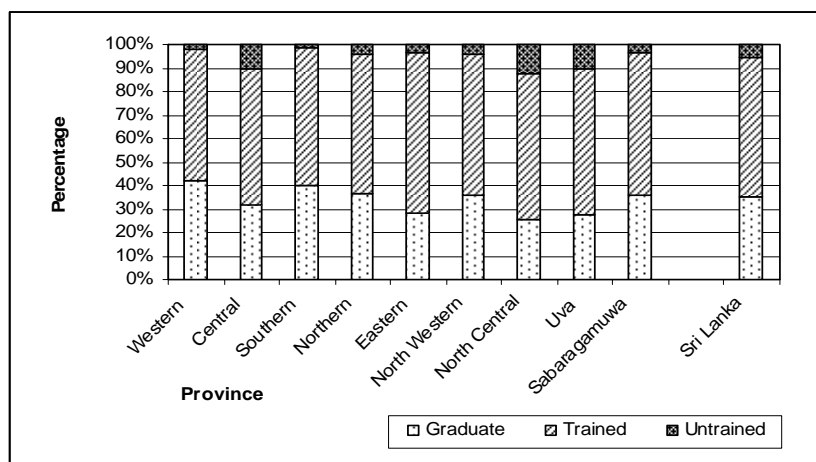
Table 1.9: Teachers by major qualification category and province

Province	Graduates	Trained	Untrained		Other	Total
			Absorbed to SLTS	Not Absorbed to SLTS		
Western	17,193	23,036	576	86	105	40,996
Central	9,882	18,412	2,455	177	562	31,488
Southern	11,561	17,128	391	40	23	29,143
Northern	4,804	7,680	376	45	151	13,056
Eastern	5,053	12,238	524	97	37	17,949
North Western	9,567	16,063	987	48	63	26,728
North Central	3,592	8,817	328	1,336	56	14,129
Uva	4,820	10,813	947	760	89	17,429
Sabaragamuwa	7,746	13,197	738	70	16	21,767
Sri Lanka	74,218	127,382	7,322	2,659	1,102	212,683
%	34.9	59.9	3.4	1.3	0.5	100.0

Graduate teachers – Graduates, post graduate degree/diploma holders and graduate trainees
Trained teachers – Teachers passed out from teacher Training colleges/ National Colleges of Education and teachers having 2 year diploma in Science/Mathematics
Untrained teachers
 1). Untrained (SLTS) – Untrained teachers and 2-3 year diploma holders (absorbed to Sri Lanka Teacher Service)
 2.) Teacher trainees – Teachers not absorbed to Sri Lanka Teacher Service.
 3). Other teachers – Teacher paid by other government institutes and teachers paid by non government institutes / organizations.

About 95 percent of the teachers in government schools are either graduates or trained teachers. Because of some more appointments have been given for Trainee teachers in North central and Uva provinces in the last year, the percentage of Trainee teachers has been increased to 1.3 percent when compared to 0.3 percent in 2007.

Graph 1.4: Percentage of teachers by appointment category



Gross student teacher ratio (STR) in government schools

Student teacher ratio by various types of schools

Table 1.10: STR by functional grade, sex of student and medium of instructions

Type of school	Student Teacher Ratio
Functional grade	
1AB	23
1C	19
Type 2	15
Type 3	17
Sex of students in schools	
Boys	24
Girls	24
Mixed	18
Medium of instruction	
Sinhala only	16
Tamil only	20
Sinhala and Tamil	20
Sinhala and English	24
Tamil and English	22
Sinhala, Tamil and English	23
All schools	18

When STRs are compared by functional grade of school, Type 2 schools have the lowest and 1 AB schools have the highest value. Mixed schools have the desirable value when compared by sex of students. Sinhala medium schools have very low student teacher ratios and schools with English medium classes at any level have slightly higher student teacher ratios.

Student teacher ratios in 1 teacher and 2 teacher schools

Table 1.11: No. of 1 teacher and 2 teacher schools by student teacher ratio

STR	1 teacher schools	2 teachers schools
1 student per teacher	1	1
2 students per teacher	3	7
3 students per teacher	3	9
4 students per teacher	2	14
5 students per teacher	2	19
6 students per teacher	3	8
7 students per teacher	3	15
8 students per teacher	5	15
9 students per teacher	2	18
10-20 students per teacher	35	58
21-30 students per teacher	30	22
31-40 students per teacher	14	8
41-50 students per teacher	7	6
51-75 students per teacher	4	6
76-100 students per teacher	4	2
101 or more students per teacher	2	1
All schools	120	209

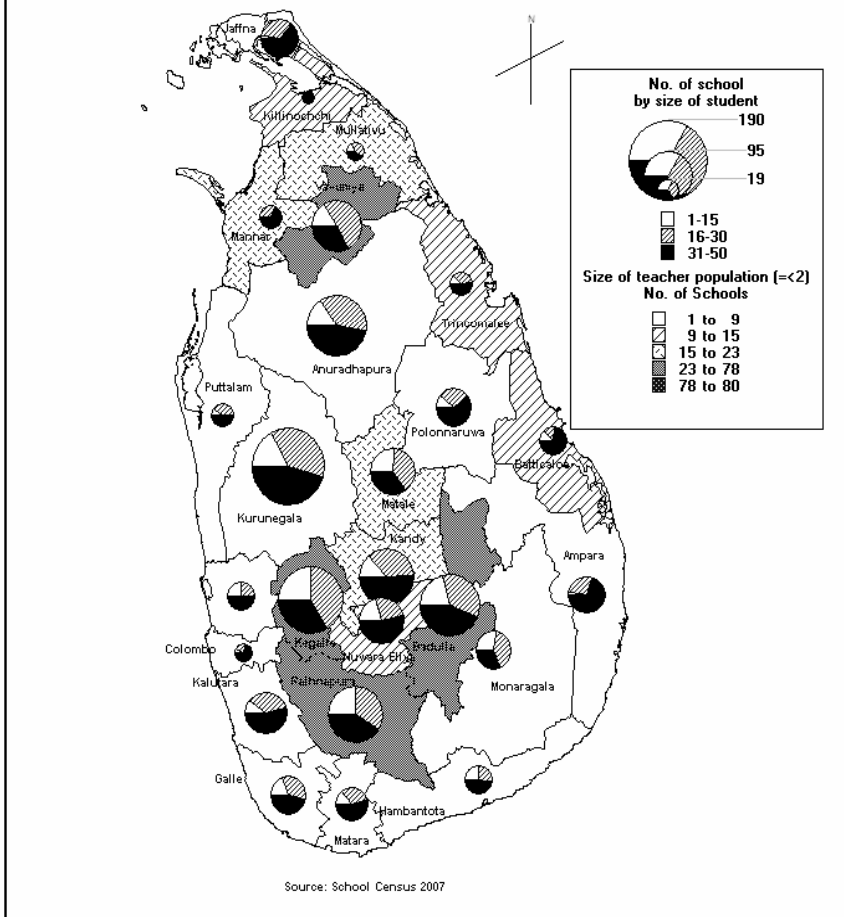
From one teacher schools, two schools have more than 100 students per teacher and in another four schools have more than 75 students per teacher. More than one fourth of 1 teacher and 2 teacher schools have 10-20 students per teacher. The number of 1 teacher and 2 teacher schools have been decreased when compared the values in 2007.

Student teacher ratio by appointment category of teachers

Table 1.12: Student teacher ratio (STR) by province

Province	Student/Graduate teacher ratio	Student/Trained teacher ratio	Student/Untrained teacher ratio	Overall teacher ratio
Western	52	39	1,170	22
Central	52	28	162	16
Southern	44	30	1,116	17
Northern	54	34	457	20
Eastern	75	31	575	21
North Western	49	29	427	18
North Central	70	29	146	18
Uva	58	26	156	16
Sabaragamuwa	47	28	445	17
Sri Lanka	53	31	355	18

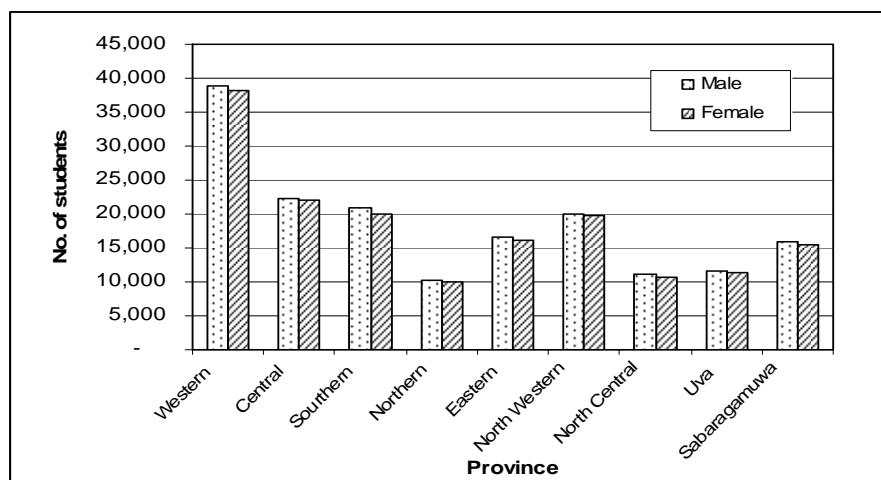
Schools by size of student population (≤ 50) and size of teacher population [≤ 2] by district - 2008



Western province has the highest student teacher ratio while Central and Uva provinces are fortunate to have the lowest student teacher ratio (16:1). Students in the Western and Southern provinces are privileged to have very high student untrained teacher ratios. Because of new appointments of trainee teachers given in the North Central and Uva provinces and higher number of untrained teachers available in estate schools and in some provincial schools in the Central province, low student untrained teacher ratios can be seen in those three provinces.

Grade one new admissions

Graph 1.5: Grade 1 new admission by gender and province



Admissions to Grade one by gender and medium of study

Table 1.13: Grade 1 admissions by medium, gender and province

Province	Gender		Medium of study			Total
	Male	Female	Sinhala	Tamil	English	
Western	38,762	38,080	69,945	6,888	9	76,842
Central	22,296	22,101	28,118	16,279	0	44,397
Southern	20,797	20,039	39,498	1,338	0	40,836
Northern	10,293	9,934	198	20,029	0	20,227
Eastern	16,583	16,054	6,376	26,261	0	32,637
North Western	19,912	19,660	33,202	6,370	0	39,572
North Central	11,122	10,577	19,284	2,415	0	21,699
Uva	11,559	11,369	18,019	4,898	11	22,928
Sabaragamuwa	15,897	15,413	26,428	4,882	0	31,310
Sri Lanka						
%	167,221	163,227	241,068	89,360	20	330,448

Similar to the previous years, boys slightly outnumber girls in grade 1 admissions in all nine provinces. Grade one admissions have been decreased to 330,448 in 2008 compared to 334,641 in 2007. In the Western and Uva Provinces have English medium grade 1 admissions.

Table 1 - Functioning government schools by functional grade and district

District	1AB	1C	Type 2	Type 3	Total
Colombo	67	82	186	68	403
Gampaha	55	106	235	139	535
Kalutara	40	72	196	94	402
Kandy	50	172	257	158	637
Matale	16	68	110	112	306
NuwaraEliya	28	86	162	240	516
Galle	47	95	196	85	423
Matara	30	86	180	65	361
Hambanthota	26	74	153	57	310
Jaffna	39	49	151	158	397
Kilinochchi	6	16	37	32	91
Mannar	7	20	31	41	99
Vavuniya	6	24	44	112	186
Mullaitivu	5	13	39	47	104
Batticaloa	19	48	106	152	325
Ampara	23	63	162	148	396
Trincomalee	16	53	98	81	248
Kurunegala	51	204	421	200	876
Puttalam	23	71	202	46	342
Anuradhapura	19	106	252	166	543
Polonnaruwa	12	48	85	86	231
Badulla	38	129	234	169	570
Monaragala	15	53	133	61	262
Ratnapura	32	95	286	165	578
Kegalle	28	104	210	179	521
Sri Lanka	698	1,937	4,166	2,861	9,662

Source - School Census 2008, Provisional

Table 2 - Functioning schools by sex of students, medium of instruction and district

District	Sinhala medium only				Tamil medium only				Sinhala and Tamil media				Sinhala and English media			
	Boys	Girls	Mixed	Total	Boys	Girls	Mixed	Total	Boys	Girls	Mixed	Total	Boys	Girls	Mixed	Total
Colombo	17	22	256	295	2	3	32	37	3	5	5	13	10	20	18	48
Gampaha	6	11	463	480	0	1	19	20	0	0	0	0	2	7	21	30
Kalutara	4	9	319	332	0	0	52	52	0	0	2	2	1	2	7	10
Kandy	2	5	411	418	1	0	167	168	1	1	5	7	5	7	16	28
Matale	1	1	244	246	0	0	50	50	0	0	1	1	1	1	2	4
NuwaraEliya	1	3	203	207	1	1	292	294	1	1	5	7	0	0	5	5
Galle	2	2	382	386	0	0	13	13	0	1	2	3	4	7	9	20
Matara	0	1	325	326	0	0	15	15	0	0	1	1	4	2	11	17
Hambanthota	1	0	289	290	0	0	8	8	0	0	0	0	1	1	10	12
Jaffna	0	0	0	0	7	4	355	366	0	0	0	0	0	0	0	0
Kilinochchi	0	0	0	0	0	0	91	91	0	0	0	0	0	0	0	0
Mannar	0	0	0	0	1	2	91	94	0	0	0	0	0	0	0	0
Vavuniya	0	0	15	15	0	0	168	168	0	0	0	0	0	0	0	0
Mullaitivu	0	0	0	0	0	0	103	103	0	0	0	0	0	0	0	0
Batticaloa	0	0	0	0	2	2	312	316	0	0	0	0	0	0	0	0
Ampara	0	1	174	175	3	3	202	208	0	0	0	0	0	0	1	1
Trincomalee	0	0	63	63	5	9	159	173	0	0	1	1	0	0	2	2
Kurunegala	4	3	750	757	0	0	82	82	0	0	0	0	2	3	30	35
Puttalam	3	4	249	256	0	0	68	68	0	0	4	4	2	4	5	11
Anuradhapura	0	0	465	465	0	0	64	64	0	0	2	2	1	1	10	12
Polonnaruwa	0	0	206	206	0	0	22	22	0	0	0	0	0	0	3	3
Badulla	0	0	372	372	1	1	173	175	0	0	0	0	1	4	14	19
Monaragala	2	0	235	237	0	0	17	17	0	0	0	0	0	0	8	8
Ratnapura	0	1	453	454	0	0	97	97	0	0	0	0	2	0	22	24
Kegalle	2	1	405	408	0	0	90	90	0	0	0	0	2	2	12	16
Sri Lanka	45	64	6,279	6,388	23	26	2,742	2,791	5	8	28	41	38	61	206	305

Source - School Census 2008, Provisional

Table 2 - Functioning schools by sex of students, medium of instruction and district (cont.)

District	Tamil and English media				Sinhala, Tamil and English media				All schools			
	Boys	Girls	Mixed	Total	Boys	Girls	Mixed	Total	Boys	Girls	Mixed	Total
Colombo	1	1	2	4	3	3	0	6	36	54	313	403
Gampaha	0	0	2	2	1	1	1	3	9	20	506	535
Kalutara	1	2	0	3	0	0	3	3	6	13	383	402
Kandy	0	2	4	6	3	5	2	10	12	20	605	637
Matale	0	1	4	5	0	0	0	0	2	3	301	306
NuwaraEliya	0	0	2	2	0	1	0	1	3	6	507	516
Galle	0	0	1	1	0	0	0	0	6	10	407	423
Matara	0	0	1	1	0	0	1	1	4	3	354	361
Hambanthota	0	0	0	0	0	0	0	0	2	1	307	310
Jaffna	2	8	21	31	0	0	0	0	9	12	376	397
Kilinochchi	0	0	0	0	0	0	0	0	0	0	91	91
Mannar	1	1	3	5	0	0	0	0	2	3	94	99
Vavuniya	0	0	3	3	0	0	0	0	0	0	186	186
Mullaitivu	0	0	1	1	0	0	0	0	0	0	104	104
Batticaloa	3	3	3	9	0	0	0	0	5	5	315	325
Ampara	1	3	8	12	0	0	0	0	4	7	385	396
Trincomalee	3	4	2	9	0	0	0	0	8	13	227	248
Kurunegala	0	0	2	2	0	0	0	0	6	6	864	876
Puttalam	1	0	1	2	0	1	0	1	6	9	327	342
Anuradhapura	0	0	0	0	0	0	0	0	1	1	541	543
Polonnaruwa	0	0	0	0	0	0	0	0	0	0	231	231
Badulla	0	0	3	3	0	0	1	1	2	5	563	570
Monaragala	0	0	0	0	0	0	0	0	2	0	260	262
Ratnapura	0	0	1	1	0	0	2	2	2	1	575	578
Kegalle	0	0	7	7	0	0	0	0	4	3	514	521
Sri Lanka	13	25	71	109	7	11	10	28	131	195	9,336	9,662

Source - School Census 2008, Provisional

Table 3 - Government schools by functional grade span

District	1-5	1-8	1-11	1-13	6-11	6-13	Total
Colombo	64	6	183	132	3	15	403
Gampaha	135	5	228	114	7	46	535
Kalutara	83	17	189	101	1	11	402
Kandy	135	24	257	190	0	31	637
Matale	104	8	110	72	0	12	306
NuwaraEliya	193	47	160	110	2	4	516
Galle	75	11	196	125	1	15	423
Matara	57	10	177	91	2	24	361
Hambanthota	56	1	151	79	2	21	310
Jaffna	144	14	149	64	2	24	397
Kilinochchi	25	7	37	21	0	1	91
Mannar	33	8	31	27	0	0	99
Vavuniya	101	12	43	30	0	0	186
Mullaitivu	39	8	39	15	0	3	104
Batticaloa	136	17	105	64	0	3	325
Ampara	133	15	162	82	0	4	396
Trincomalee	60	21	97	67	1	2	248
Kurunegala	179	21	421	233	0	22	876
Puttalam	33	13	202	83	0	11	342
Anuradhapura	144	26	248	115	0	10	543
Polonnaruwa	71	15	86	58	0	1	231
Badulla	133	39	230	161	1	6	570
Monaragala	45	16	133	67	0	1	262
Ratnapura	124	43	284	110	0	17	578
Kegalle	167	14	207	111	2	20	521
Sri Lanka	2,469	418	4,125	2,322	24	304	9,662

Source: School Census 2008 Provisional

Table 4 - Functioning schools by medium of instruction, sex of students and functional grade

Functional grade	Medium of instruction						Sex of students			
	Sinhala medium only	Tamil medium only	Sinhala and Tamil media	Sinhala and English media	Tamil and English media	Sinhala, Tamil and English media	Boys	Girls	Mixed	Total
1AB	237	78	8	258	94	23	76	104	518	698
1C	1,362	500	13	43	15	4	13	50	1,874	1,937
Type 2	3,157	987	17	4	-	1	22	23	4,121	4,166
Type 3	1,632	1,226	3	-	-	-	20	18	2,823	2,861
Total	6,388	2,791	41	305	109	28	131	195	9,336	9,662

Source : School Census 2008, Provisional

Table 5 - Students by gender, medium of study and functional grade of school

Functional grade	Sinhala medium			Tamil medium			English medium			All medium		
	Male	Female	Total	Male	Female	Total	Male	Female	Total	Male	Female	Total
1AB	500,709	517,702	1,018,411	130,925	125,279	256,204	21,093	28,217	49,310	652,727	671,198	1,323,925
1C	451,017	473,712	924,729	165,167	183,515	348,682	1,308	2,151	3,459	617,492	659,378	1,276,870
Type 2	358,668	337,524	696,192	147,651	144,196	291,847	178	191	369	506,497	481,911	988,408
Type 3	109,935	109,040	218,975	63,390	57,666	121,056	-	-	-	173,325	166,706	340,031
Total	1,420,329	1,437,978	2,858,307	507,133	510,656	1,017,789	22,579	30,559	53,138	1,950,041	1,979,193	3,929,234

Source : School Census 2008, Provisional

Table 6 - National, Navodya , and Isuru and their student enrolment by district

District	National schools			Navodya schools			Isuru schools			Other schools		
	No.	Students	%	No.	Students	%	No.	Students	%	No.	Students	%
Colombo	34	110,860	31.2	47	64,771	18.2	-	.	.	322	180,251	50.6
Gampaha	17	45,393	13.5	61	71,274	21.1	3	3,527	1.0	454	217,103	64.4
Kalutara	15	40,690	19.9	36	43,129	21.1	2	3,852	1.9	349	116,501	57.1
Kandy	35	60,287	22.4	30	24,384	9.1	4	3,259	1.2	568	181,455	67.4
Matale	12	21,233	22.7	10	9,865	10.6	2	850	0.9	282	61,470	65.8
NuwaraEliya	7	9,805	6.3	25	22,621	14.6	3	3,345	2.2	481	119,278	76.9
Galle	28	75,718	34.9	31	31,770	14.7	-	.	.	364	109,337	50.4
Matara	20	47,988	29.5	23	22,596	13.9	1	715	0.4	317	91,478	56.2
Hambanthota	14	29,789	23.4	15	15,256	12.0	1	825	0.6	280	81,378	64.0
Jaffna	4	8,252	6.8	10	7,622	6.3	-	.	.	383	105,730	86.9
Kilinochchi	-	.	.	1	694	1.9	-	.	.	90	35,520	98.1
Mannar	3	4,974	17.6	3	1,363	4.8	-	.	.	93	21,867	77.5
Vavuniya	4	6,844	16.6	6	3,343	8.1	1	1,003	2.4	175	29,989	72.8
Mullaitivu	-	.	.	2	2,166	6.3	-	.	.	102	32,251	93.7
Batticaloa	9	17,465	13.5	10	11,663	9.0	-	.	.	306	100,059	77.5
Ampara	10	20,542	13.4	14	15,957	10.4	2	2,571	1.7	370	114,605	74.6
Trincomalee	9	13,547	14.2	13	12,175	12.8	1	858	0.9	225	68,891	72.2
Kurunegala	28	57,862	18.7	38	47,685	15.4	3	2,167	0.7	807	201,613	65.2
Puttalam	7	17,789	11.1	22	21,717	13.6	3	2,720	1.7	310	117,321	73.5
Anuradhapura	6	16,844	9.7	23	23,870	13.8	4	4,539	2.6	510	128,041	73.9
Polonnaruwa	4	9,265	11.8	12	12,045	15.4	2	2,515	3.2	213	54,629	69.6
Badulla	27	37,920	20.7	28	26,042	14.2	3	3,285	1.8	512	115,506	63.2
Monaragala	9	18,545	19.1	10	9,170	9.5	1	1,108	1.1	242	68,023	70.2
Ratnapura	14	32,634	15.6	23	26,242	12.6	3	4,359	2.1	538	145,751	69.7
Kegalle	14	34,021	21.5	22	16,024	10.1	1	1,678	1.1	484	106,300	67.3
Sri Lanka	330	738,267	18.8	515	543,444	13.8	40	43,176	1.1	8,777	2,604,347	66.3

Source - School Census 2008 Provisional

Table 7 - Student by gender, medium of study and district

District	Sinhala medium			Tamil medium			English medium			All students		
	Male	Female	Total	Male	Female	Total	Male	Female	Total	Male	Female	Total
Colombo	157,454	149,715	307,169	19,423	18,203	37,626	5,524	5,563	11,087	182,401	173,481	355,882
Gampaha	154,796	161,151	315,947	8,235	8,856	17,091	1,586	2,673	4,259	164,617	172,680	337,297
Kalutara	89,029	88,822	177,851	11,802	12,943	24,745	682	894	1,576	101,513	102,659	204,172
Kandy	97,650	100,470	198,120	32,256	33,536	65,792	2,055	3,418	5,473	131,961	137,424	269,385
Matale	37,428	38,052	75,480	8,343	8,502	16,845	496	597	1,093	46,267	47,151	93,418
NuwaraEliya	31,905	33,112	65,017	44,818	44,737	89,555	168	309	477	76,891	78,158	155,049
Galle	104,550	104,489	209,039	2,498	2,448	4,946	1,229	1,611	2,840	108,277	108,548	216,825
Matara	77,716	75,755	153,471	3,498	3,300	6,798	1,113	1,395	2,508	82,327	80,450	162,777
Hambanthota	60,399	63,333	123,732	1,122	1,185	2,307	404	805	1,209	61,925	65,323	127,248
Jaffna	-	-	-	59,258	60,629	119,887	804	913	1,717	60,062	61,542	121,604
Kilinochchi	-	-	-	17,936	18,278	36,214	-	-	-	17,936	18,278	36,214
Mannar	-	-	-	13,851	14,202	28,053	77	74	151	13,928	14,276	28,204
Vavuniya	1,149	1,176	2,325	19,139	19,360	38,499	147	208	355	20,435	20,744	41,179
Mullaitivu	-	-	-	16,955	17,438	34,393	11	13	24	16,966	17,451	34,417
Batticaloa	-	-	-	63,927	64,752	128,679	217	291	508	64,144	65,043	129,187
Ampara	27,254	27,805	55,059	49,834	47,803	97,637	373	606	979	77,461	76,214	153,675
Trincomalee	9,856	9,970	19,826	38,292	36,731	75,023	279	343	622	48,427	47,044	95,471
Kurunegala	137,897	138,193	276,090	12,482	14,098	26,580	2,936	3,721	6,657	153,315	156,012	309,327
Puttalam	56,390	56,542	112,932	22,186	22,536	44,722	818	1,075	1,893	79,394	80,153	159,547
Anuradhapura	76,296	77,710	154,006	8,884	8,878	17,762	685	841	1,526	85,865	87,429	173,294
Polonnaruwa	34,604	35,567	70,171	4,117	3,925	8,042	71	170	241	38,792	39,662	78,454
Badulla	66,077	68,893	134,970	22,629	23,116	45,745	815	1,223	2,038	89,521	93,232	182,753
Monaragala	44,947	47,285	92,232	2,094	1,991	4,085	166	363	529	47,207	49,639	96,846
Ratnapura	90,194	94,221	184,415	11,483	11,011	22,494	764	1,313	2,077	102,441	106,545	208,986
Kegalle	64,738	65,717	130,455	12,071	12,198	24,269	1,159	2,140	3,299	77,968	80,055	158,023
Sri Lanka	1,420,329	1,437,978	2,858,307	507,133	510,656	1,017,789	22,579	30,559	53,138	1,950,041	1,979,193	3,929,234

Source: School Census 2008 Provisional

Table 8 - Students by school grade and district

District	Grade 1	Grade 2	Grade 3	Grade 4	Grade 5	Grade 6	Grade 7	Grade 8	Grade 9	Grade 10	Grade 11	Grade 11 Repeaters
Colombo	28,861	29,543	28,658	28,092	26,512	29,842	29,559	28,773	27,492	27,813	26,534	844
Gampaha	29,969	30,147	29,261	28,446	26,654	27,454	27,387	26,885	25,799	25,276	24,402	1,072
Kalutara	18,405	18,667	17,478	17,109	16,096	16,797	16,424	15,729	15,327	14,517	14,191	1,489
Kandy	22,375	22,396	21,601	20,208	20,293	21,090	21,299	21,300	21,618	21,374	21,346	3,165
Matale	8,092	8,303	8,131	7,369	7,328	7,237	7,357	7,261	7,477	7,480	7,269	976
NuwaraEliya	14,008	14,308	13,987	12,962	12,606	12,616	12,633	12,830	12,372	11,740	11,054	2,114
Galle	17,553	17,849	17,147	17,566	17,129	17,545	17,353	17,225	17,325	16,435	17,070	1,696
Matara	13,288	13,207	13,052	12,962	12,266	12,220	12,838	12,485	12,917	12,663	13,209	2,039
Hambanthota	10,123	10,092	9,768	9,672	8,934	9,164	10,082	9,770	10,376	10,146	10,336	3,623
Jaffna	8,009	8,994	9,726	10,015	9,002	8,976	9,205	10,646	9,639	9,547	9,383	2,693
Kilinochchi	3,332	3,866	3,297	3,618	2,720	2,809	2,999	3,097	2,743	2,746	2,337	425
Mannar	2,461	2,563	2,600	2,571	2,406	2,312	2,291	2,359	2,032	1,953	1,474	571
Vavuniya	3,154	3,498	3,150	3,191	2,799	2,629	2,748	2,972	2,624	2,360	2,230	1,037
Mullaitivu	3,350	3,548	3,556	3,780	3,340	3,659	3,639	3,562	3,283	3,239	2,576	380
Batticaloa	11,668	11,818	12,437	11,982	11,161	11,925	11,135	10,465	9,253	8,249	7,195	2,287
Ampara	13,284	14,016	13,721	12,870	12,851	13,124	12,947	12,945	12,628	12,178	10,873	2,573
Trincomalee	8,215	8,455	8,825	8,514	7,889	8,074	7,778	7,711	7,655	7,235	5,937	2,056
Kurunegala	25,757	26,360	25,510	24,089	22,845	24,222	24,284	24,249	24,388	24,716	23,629	2,417
Puttalam	14,084	14,482	14,604	13,962	13,271	14,253	13,723	13,007	12,484	11,457	10,387	916
Anuradhapura	14,994	15,196	15,539	13,406	13,292	14,112	14,201	13,805	14,111	14,812	13,593	1,756
Polonnaruwa	6,357	6,770	6,551	5,717	5,608	5,836	5,762	5,904	6,018	6,217	5,360	537
Badulla	15,303	15,461	15,085	14,818	14,230	15,152	15,201	14,488	14,410	14,088	13,801	3,347
Monaragala	7,715	7,804	7,484	7,473	7,013	7,600	8,180	8,107	8,627	8,438	7,517	2,304
Ratnapura	17,756	17,715	16,826	16,767	16,085	16,155	16,691	17,046	16,957	16,925	16,932	2,060
Kegalle	13,773	13,687	13,398	12,922	12,062	12,218	12,199	11,983	12,264	11,991	11,793	1,633
Sri Lanka	331,886	338,745	331,392	320,081	304,392	317,021	317,915	314,604	309,819	303,595	290,428	44,010

Source - School Census 2008 - Provisional

Table 8 - Students by school grade and district (cont.)

District	2010 A/L grade 12			2009 A/L grade12			2008 A/L grade13			2008 A/L grade13 Repeaters			Special	Total
	Science	Art	Commerce	Science	Art	Commerce	Science	Art	Commerce	Science	Art	Commerce	Education	
Colombo	4,301	3,453	5,380	4,864	3,729	6,244	5,060	3,206	5,751	412	117	354	488	355,882
Gampaha	2,305		3,860	2,805	4,158	4,207	2,834	3,618	4,184	502	387	517	741	337,297
Kalutara	1,684	3,267	2,303	1,626	2,948	2,059	1,761	2,747	2,172	204	327	278	567	204,172
Kandy	2,230	5,422	2,699	2,274	4,957	2,665	2,247	4,604	2,755	119	576	332	440	269,385
Matale	534	1,744	636	488	1,792	681	598	1,554	700	18	236	72	85	93,418
NuwaraEliya	514	2,128	828	654	2,173	865	771	2,068	844	161	471	243	99	155,049
Galle	2,051	3,486	2,098	2,252	3,715	2,351	2,127	3,340	2,408	280	411	242	171	216,825
Matara	1,443	3,265	1,253	1,653	3,104	1,283	1,764	2,641	1,581	366	603	368	307	162,777
Hambanthota	1,275	2,523	910	1,387	2,416	905	1,322	2,059	930	310	694	289	142	127,248
Jaffna	1,049	3,550	542	853	3,081	560	956	3,031	579	333	1,016	219	-	121,604
Kilinochchi	146	718	184	113	349	131	95	240	101	46	88	14	-	36,214
Mannar	131	604	170	104	460	130	128	398	106	84	234	62	-	28,204
Vavuniya	136	589	129	69	355	101	61	283	72	38	173	56	-	34,454
Mullaitivu	279	715	161	236	693	160	195	544	151	29	74	18	12	41,179
Batticaloa	589	2,154	489	477	1,726	427	505	1,629	381	240	818	233	-	129,243
Ampara	849	3,132	734	772	2,843	683	853	2,460	738	407	1,018	317	37	158,853
Trincomalee	295	1,783	426	275	1,335	456	298	1,103	379	119	407	119	95	95,434
Kurunegala	2,484	7,739	2,369	2,291	6,834	2,387	2,535	6,156	2,442	94	685	214	631	309,327
Puttalam	823	2,604	1,144	754	2,228	1,006	818	1,923	976	77	273	107	184	159,547
Anuradhapura	453	2,875	708	989	2,878	1,001	1,154	2,745	1,075	7	302	77	213	173,294
Polonnaruwa	437	1,421	500	392	1,104	502	429	1,082	424	12	117	37	126	73,220
Badulla	870	3,295	1,084	1,103	3,124	1,258	1,103	2,674	1,380	193	775	353	157	182,753
Monaragala	340	1,591	483	414	1,592	575	469	1,489	697	97	507	265	65	96,846
Ratnapura	977	3,322	1,317	1,718	3,984	1,808	1,676	3,353	1,922	137	383	177	297	208,986
Kegalle	1,341	3,196	1,193	1,326	3,181	1,311	1,414	2,952	1,223	185	312	174	292	158,023
Sri Lanka	27,536	69,003	31,600	29,889	64,759	33,756	31,173	57,899	33,971	4,470	11,004	5,137	5,149	3,929,234

Source - School Census 2008 - Provisional

Table 9 - Government schools and their student enrolment by functional grade and district

District	1AB			1C			Type 2			Type 3		
	Schools	Students		Schools	Students		Schools	Students		Schools	Students	
		No.	%		No.	%		No.	%		No.	%
Colombo	67	182,945	51.4	82	78,746	22.1	186	73,690	20.7	68	20,501	5.8
Gampaha	55	119,749	35.5	106	95,079	28.2	235	81,055	24.0	139	41,414	12.3
Kalutara	40	85,680	42.0	72	60,195	29.5	196	48,071	23.5	94	10,226	5.0
Kandy	50	97,143	36.1	172	100,600	37.3	257	52,421	19.5	158	19,221	7.1
Matale	16	26,451	28.3	68	36,762	39.4	110	19,630	21.0	112	10,575	11.3
NuwaraEliya	28	34,932	22.5	86	56,226	36.3	162	42,628	27.5	240	21,263	13.7
Galle	47	102,822	47.4	95	62,995	29.1	196	36,814	17.0	85	14,194	6.5
Matara	30	59,522	36.6	86	50,370	30.9	180	36,525	22.4	65	16,360	10.1
Hambanthota	26	44,132	34.7	74	37,114	29.2	153	30,072	23.6	57	15,930	12.5
Jaffna	39	40,119	33.0	49	27,075	22.3	151	36,218	29.8	158	18,192	15.0
Kilinochchi	6	6,045	16.7	16	13,077	36.1	37	13,071	36.1	32	4,021	11.1
Mannar	7	7,919	28.1	20	10,633	37.7	31	6,569	23.3	41	3,083	10.9
Vavuniya	6	12,000	29.1	24	13,302	32.3	44	10,897	26.5	112	4,980	12.1
Mullaitivu	5	5,680	16.5	13	9,852	28.6	39	15,281	44.4	47	3,604	10.5
Batticaloa	19	31,588	24.5	48	38,285	29.6	106	40,429	31.3	152	18,885	14.6
Ampara	23	39,971	26.0	63	47,175	30.7	162	50,819	33.1	148	15,710	10.2
Trincomalee	16	21,729	22.8	53	36,623	38.4	98	28,527	29.9	81	8,592	9.0
Kurunegala	51	103,612	33.5	204	122,288	39.5	421	69,096	22.3	200	14,331	4.6
Puttalam	23	41,456	26.0	71	55,353	34.7	202	52,615	33.0	46	10,123	6.3
Anuradhapura	19	41,164	23.8	106	67,234	38.8	252	48,903	28.2	166	15,993	9.2
Polonnaruwa	12	21,764	27.7	48	32,996	42.1	85	18,612	23.7	86	5,082	6.5
Badulla	38	57,413	31.4	129	68,970	37.7	234	46,012	25.2	169	10,358	5.7
Monaragala	15	27,890	28.8	53	35,879	37.0	133	29,807	30.8	61	3,270	3.4
Ratnapura	32	57,660	27.6	95	69,662	33.3	286	62,806	30.1	165	18,858	9.0
Kegalle	28	54,539	34.5	104	50,379	31.9	210	37,840	23.9	179	15,265	9.7
Sri Lanka	698	1,323,925	33.7	1,937	1,276,870	32.5	4,166	988,408	25.2	2,861	340,031	8.7

Source - School Census 2008 Provisional

Table 10 - Schools by size of student population and district

District	Size of population																					Total	
	1-15 students	16-30 students	31-50 students	51-75 students	76 - 100 students	101-125 students	126 - 150 students	151 - 175 students	176 - 200 students	201 - 300 students	301 - 500 students	501 - 750 students	751 - 1000 students	1001 - 1500 students	1501- 2000 students	2001 - 2500 students	2501- 3000 students	3001-3500 students	3501 - 4000 students	4001 - 4500 students	4501 - 5000 students		5001 students and above
Colombo	1	4	12	11	9	16	11	16	13	58	61	42	32	41	23	22	12	7	2	2	4	4	403
Gampaha	7	7	14	24	22	20	23	25	18	65	95	63	47	51	21	14	9	5	3	2	0	0	535
Kalutara	6	21	31	33	28	24	10	26	15	44	51	26	24	28	14	9	4	3	3	2	0	0	402
Kandy	14	38	53	51	31	42	36	27	27	74	90	49	37	31	13	9	7	4	1	2	0	1	637
Matale	19	27	25	31	16	15	22	10	18	42	28	16	14	13	6	2	2	0	0	0	0	0	306
NuwaraEliya	16	20	41	55	57	33	31	26	18	55	61	54	16	25	7	1	0	0	0	0	0	0	516
Galle	10	17	23	32	36	24	21	35	15	45	52	30	18	29	12	10	5	1	4	1	1	2	423
Matara	6	14	23	25	25	19	26	21	15	42	51	36	13	23	7	7	5	0	1	0	1	1	361
Hambanthota	8	8	14	34	26	17	14	12	12	49	47	22	16	17	5	2	3	2	1	1	0	0	310
Jaffna	1	16	29	43	32	25	31	25	10	57	52	37	16	15	4	4	0	0	0	0	0	0	397
Kilinochchi	0	0	8	6	6	7	5	4	4	8	16	13	6	6	1	0	1	0	0	0	0	0	91
Mannar	0	6	13	9	8	6	3	5	8	8	15	10	5	1	2	0	0	0	0	0	0	0	99
Vavuniya	14	44	28	20	10	3	5	7	2	17	11	13	4	3	2	1	1	1	0	0	0	0	186
Mullaitivu	3	8	7	7	8	9	4	4	3	10	15	14	5	5	2	0	0	0	0	0	0	0	104
Batticaloa	4	5	23	28	26	17	28	13	6	39	41	42	24	15	8	5	1	0	0	0	0	0	325
Ampara	1	15	37	26	28	16	27	24	12	65	45	43	17	23	9	6	2	0	0	0	0	0	396
Trincomalee	3	8	12	14	14	19	18	12	7	34	42	28	18	12	4	3		0	0	0	0	0	248
Kurunegala	31	67	82	77	58	73	43	51	35	79	114	67	25	30	16	13	6	4	4	1	0	0	876
Puttalam	2	9	11	18	24	19	23	23	10	49	50	33	29	22	15	0	2	1	2	0	0	0	342
Anuradhapura	19	47	58	46	40	30	27	26	22	62	71	34	28	15	7	4	4	2	0	1	0	0	543
Polonnaruwa	5	15	29	27	17	9	11	4	9	29	30	16	14	5	7	3	0	0	1	0	0	0	231
Badulla	24	41	50	37	47	30	43	29	22	68	72	47	18	22	10	6	2	2	0	0	0	0	570
Monaragala	13	19	15	15	11	21	16	12	12	34	32	30	8	12	7	3	2	0	0	0	0	0	262
Ratnapura	28	37	45	44	48	27	24	33	27	70	77	39	30	27	11	3	4	0	1	2	1	0	578
Kegalle	36	59	48	38	41	27	30	33	17	58	54	27	20	16	3	4	5	3	1	0	1	0	521
Sri Lanka	271	552	731	751	668	548	532	503	357	1161	1273	831	484	487	216	131	77	35	24	14	8	8	9662

Table 11 - Schools by functional grade, sex of students and size of student population

size of student population	Functional grade				sex of students			Total
	1AB	1C	Type 2	Type 3	Boys	Girls	Mixed	
1-15 students	0	0	19	252	8	3	260	271
16-30 students	0	1	63	488	0	0	552	552
31-50 students	0	0	148	583	1	0	730	731
51-75 student	0	2	293	456	1	0	750	751
76 - 100 students	0	4	361	303	1	0	667	668
101-125 students	0	10	374	164	1	1	546	548
126 - 150 students	0	18	373	141	3	2	527	532
151 - 175 students	0	24	392	87	3	1	499	503
176 - 200 students	0	24	283	50	0	1	356	357
201 - 300 students	4	188	872	97	5	8	1,148	1,161
301 - 500 students	7	521	653	92	9	10	1,254	1,273
501 - 750 students	43	513	213	62	12	19	800	831
751 - 1000 students	68	305	65	46	8	24	452	484
1001 - 1500 students	158	257	40	32	18	31	438	487
1501- 2000 students	147	51	11	7	9	30	177	216
2001 - 2500 students	114	13	4	0	20	26	85	131
2501- 3000 students	71	5	1	0	8	17	52	77
3001-3500 students	33	0	1	1	6	8	21	35
3501 - 4000 students	24	0	0	0	7	5	12	24
4001 - 4500 students	13	1	0	0	4	3	7	14
4501 - 5000 students	8	0	0	0	3	4	1	8
5001 students and above	8	0	0	0	4	2	2	8
Total	698	1,937	4,166	2,861	131	195	9,336	9,662

Source - School Census 2008, Provisional

Table 12 - Schools by medium of instruction and size of student population

size of student population	Sinhala only	Tamil only	Sinhala and Tamil	Sinhala and English	Tamil and English	Sinhala, Tamil and English	Total
1-15 students	236	35	0	0	0	0	271
16-30 students	419	133	0	0	0	0	552
31-50 students	503	227	1	0	0	0	731
51-75 student	484	267	0	0	0	0	751
76 - 100 students	411	256	1	0	0	0	668
101-125 students	373	174	1	0	0	0	548
126 - 150 students	343	188	1	0	0	0	532
151 - 175 students	361	141	1	0	0	0	503
176 - 200 students	265	91	1	0	0	0	357
201 - 300 students	821	334	4	1	1	0	1,161
301 - 500 students	860	403	5	4	1	0	1,273
501 - 750 students	524	270	3	14	17	3	831
751 - 1000 students	307	141	7	14	14	1	484
1001 - 1500 students	300	100	13	45	26	3	487
1501 - 2000 students	106	21	1	55	27	6	216
2001 - 2500 students	46	7	1	60	16	1	131
2501 - 3000 students	20	3	0	47	4	3	77
3001 - 3500 students	6	0	1	22	2	4	35
3501 - 4000 students	2	0	0	21	0	1	24
4001 - 4500 students	1	0	0	10	1	2	14
4501 - 5000 students	0	0	0	7	0	1	8
5001 students and above	0	0	0	5	0	3	8
Total	6,388	2,791	41	305	109	28	9,662

Source - School Census 2008, Provisional

Table 13 -Teachers by category of appointment and district

District	Graduate teachers	Trained teachers	Untrained		Other teachers	Total
			Absorbed to SLTS	Not Absorbed to SLTS		
Colombo	7,035	8,588	193	29	49	15,894
Gampaha	6,150	8,721	138	8	20	15,037
Kalutara	4,008	5,727	245	49	36	10,065
Kandy	5,555	9,899	640	61	21	16,176
Matale	2,206	3,582	272	4	5	6,069
NuwaraEliya	2,121	4,931	1,543	112	536	9,243
Galle	4,139	6,990	134	19	10	11,292
Matara	3,942	6,080	144	14	12	10,192
Hambanthota	3,480	4,058	113	7	1	7,659
Jaffna	3,225	3,753	85	12	24	7,099
Kilinochchi	266	844	47	7	5	1,169
Mannar	357	705	63	4	0	1,129
Vavuniya	654	1,584	92	11	6	2,347
Mullaitivu	302	794	89	11	116	1,312
Batticaloa	2,180	3,551	103	11	6	5,851
Ampara	1,968	5,609	274	73	13	7,937
Trincomalee	905	3,077	147	13	18	4,160
Kurunegala	7,542	11,549	814	28	27	19,960
Puttalam	2,025	4,514	173	20	36	6,768
Anuradhapura	2,616	6,438	229	1,014	54	10,351
Polonnaruwa	976	2,379	99	322	2	3,778
Badulla	3,213	7,338	784	345	68	11,748
Monaragala	1,607	3,475	163	415	21	5,681
Ratnapura	4,347	6,828	399	29	13	11,616
Kegalle	3,399	6,368	339	41	3	10,150
Total	74,218	127,382	7,322	2,659	1,102	212,683

Source - School Census 2008, Provisional

16 teachers still working in temporary closed schools. Those teachers are not included in this table.

Table 14 - Government schools and teachers by functional grade of school and district

District	1AB			1C			Type 2			Type 3		
	schools	Teachers		schools	Teachers		schools	Teachers		schools	Teachers	
		No.	%		No.	%		No.	%		No.	%
Colombo	67	7,291	45.9	82	3,712	23.4	186	4,044	25.4	68	847	5.3
Gampaha	55	4,502	29.9	106	4,252	28.3	235	4,556	30.3	139	1,727	11.5
Kalutara	40	3,424	34.0	72	2,885	28.7	196	3,104	30.8	94	652	6.5
Kandy	50	4,538	28.1	172	6,158	38.1	257	4,247	26.3	158	1,233	7.6
Matale	16	1,194	19.7	68	2,372	39.1	110	1,781	29.3	112	722	11.9
NuwaraEliya	28	1,772	19.2	86	2,987	32.3	162	3,000	32.5	240	1,484	16.1
Galle	47	4,183	37.0	95	3,409	30.2	196	2,968	26.3	85	732	6.5
Matara	30	2,762	27.1	86	3,228	31.7	180	3,331	32.7	65	871	8.5
Hambanthota	26	1,844	24.1	74	2,383	31.1	153	2,672	34.9	57	760	9.9
Jaffna	39	2,038	28.7	49	1,536	21.6	151	2,424	34.1	158	1,101	15.5
Kilinochchi	6	191	16.3	16	412	35.2	37	420	35.9	32	146	12.5
Mannar	7	344	30.5	20	386	34.2	31	264	23.4	41	135	12.0
Vavuniya	6	634	27.0	24	739	31.5	44	621	26.5	112	353	15.0
Mullaitivu	5	191	14.6	13	314	23.9	39	610	46.5	47	197	15.0
Batticaloa	19	1,529	26.1	48	1,613	27.6	106	1,789	30.6	152	920	15.7
Ampara	23	1,777	22.4	63	2,304	29.0	162	2,827	35.6	148	1,029	13.0
Trincomalee	16	954	22.9	53	1,429	34.4	98	1,339	32.2	81	438	10.5
Kurunegala	51	4,885	24.5	204	7,169	35.9	421	6,558	32.9	200	1,348	6.8
Puttalam	23	1,497	22.1	71	2,134	31.5	202	2,736	40.4	46	401	5.9
Anuradhapura	19	1,689	16.3	106	3,590	34.7	252	3,805	36.8	166	1,267	12.2
Polonnaruwa	12	841	22.3	48	1,417	37.5	85	1,120	29.6	86	400	10.6
Badulla	38	2,818	24.0	129	4,182	35.6	234	3,814	32.5	169	934	8.0
Monaragala	15	1,163	20.5	53	2,001	35.2	133	2,162	38.1	61	355	6.2
Ratnapura	32	2,535	21.8	95	3,528	30.4	286	4,470	38.5	165	1,083	9.3
Kegalle	28	2,542	25.0	104	3,228	31.8	210	3,309	32.6	179	1,071	10.6
Sri Lanka	698	57,138	26.9	1,937	67,368	31.7	4,166	67,971	32.0	2,861	20,206	9.5

Source - School Census 2008, Provisional

16 teachers still working in temporary closed schools. Those teachers are not included in this table.

Table 15 - Government schools by size of teacher population and district

District	size of teacher population																					Total		
	One teacher	Two teachers	Tree teachers	Four teachers	Five teachers	Six teachers	Seven teachers	Eight teachers	Nine teachers	Ten teachers	11-15 teachers	16-20 teachers	21-25 teachers	26-30 teachers	31-40 teachers	41-50 teachers	51-60 teachers	61-70 teachers	71-80 teachers	81-90 teachers	91-100 teachers		101-150 teachers	151 teachers
Colombo	0	1	3	4	6	11	7	4	4	5	65	74	30	18	42	27	26	15	8	10	10	24	9	403
Gampaha	0	4	2	7	5	16	25	26	5	9	98	93	52	33	54	31	18	15	13	10	2	17	0	535
Kalutara	0	3	13	15	15	16	21	12	7	8	99	65	16	12	30	19	15	9	5	7	2	10	3	402
Kandy	7	8	12	24	30	28	19	16	11	17	97	114	51	37	64	30	20	11	10	10	2	14	5	637
Matale	4	13	10	14	24	13	11	9	4	4	53	48	27	15	20	12	12	5	3	2	0	3	0	306
NuwaraEliya	3	8	15	27	41	58	48	19	15	9	55	57	45	34	30	21	9	14	4	2	2	0	0	516
Galle	0	7	7	8	14	21	16	5	11	14	104	50	32	27	26	23	15	13	4	9	6	6	5	423
Matara	0	2	2	6	9	6	10	7	6	10	62	69	46	29	34	20	10	7	9	4	2	9	2	361
Hambanthota	0	3	1	2	4	19	9	9	2	4	54	67	41	24	26	18	9	5	2	5	2	4	0	310
Jaffna	2	6	11	24	28	30	23	21	6	11	69	55	30	17	28	17	9	4	3	1	1	1	0	397
Kilinochchi	0	9	9	8	5	3	7	6	2	4	9	9	9	4	3	2	1	1	0	0	0	0	0	91
Mannar	8	11	14	9	1	6	3	4	7	4	13	6	1	2	6	0	2	0	1	1	0	0	0	99
Vavuniya	56	20	7	12	6	9	6	1	10	1	15	9	10	8	4	2	2	3	0	0	2	2	1	186
Mullaitivu	8	8	6	7	4	9	5	4	3	6	13	10	7	3	7	4	0	0	0	0	0	0	0	104
Batticaloa	2	7	22	21	27	33	12	14	10	13	38	31	22	22	21	12	7	4	3	1	1	1	1	325
Ampara	2	5	12	16	19	27	24	19	15	13	80	50	18	18	34	10	11	11	2	3	2	5	0	396
Trincomalee	1	10	14	20	10	18	7	11	6	15	35	32	21	18	8	11	3	3	3	1	1	0	0	248
Kurunegala	1	5	16	36	30	37	42	27	27	25	192	143	79	55	47	31	23	14	10	6	10	14	6	876
Puttalam	1	4	6	9	12	9	13	15	21	19	81	42	32	23	21	18	3	3	5	2	0	3	0	342
Anuradhapura	1	4	14	32	36	29	23	7	15	19	130	77	44	25	39	22	7	3	4	4	1	6	1	543
Polonnaruwa	2	6	13	28	22	9	11	5	4	4	48	23	16	7	15	5	4	5	1	1	1	1	0	231
Badulla	6	17	24	24	33	23	30	20	15	16	76	92	53	34	38	28	16	5	5	1	3	11	0	570
Monaragala	1	7	9	11	7	10	8	9	7	13	46	46	23	12	25	10	3	4	2	4	2	2	1	262
Ratnapura	9	15	27	31	30	21	22	13	18	14	107	99	40	32	37	19	15	11	5	4	2	4	3	578
Kegalle	6	26	22	27	34	31	16	16	11	11	82	92	47	20	31	14	9	9	1	1	2	12	1	521
Sri Lanka	120	209	291	422	452	492	418	299	242	268	1721	1453	792	529	690	406	249	174	103	89	56	149	38	9,662

Source - School Census 2008, Provisional

16 teachers still working in temporary closed schools. Those teachers are not included in this table

Table 16 - Gross pupil teacher ratio by category of teacher and district

District	Teachers						Pupil/ Graduate	Pupil/ Trained	Pupil/ Untrained	Overall Pupil/ Teacher ratio
	Schools	Pupils	Graduate	Trained	Untrained	Total	Teacher ratio	Teacher ratio	Teacher ratio	Teacher ratio
Colombo	403	355,882	7,035	8,588	271	15,894	51	41	1,313	22
Gampaha	535	337,297	6,150	8,721	166	15,037	55	39	2,032	22
Kalutara	402	204,172	4,008	5,727	330	10,065	51	36	619	20
Kandy	637	269,385	5,555	9,899	722	16,176	48	27	373	17
Matale	306	93,418	2,206	3,582	281	6,069	42	26	332	15
NuwaraEliya	516	155,049	2,121	4,931	2,191	9,243	73	31	71	17
Galle	423	216,825	4,139	6,990	163	11,292	52	31	1,330	19
Matara	361	162,777	3,942	6,080	170	10,192	41	27	958	16
Hambanthota	310	127,248	3,480	4,058	121	7,659	37	31	1,052	17
Jaffna	397	121,604	3,225	3,753	121	7,099	38	32	1,005	17
Kilinochchi	91	36,214	266	844	59	1,169	136	43	614	31
Mannar	99	28,204	357	705	67	1,129	79	40	421	25
Vavuniya	186	41,179	654	1,584	109	2,347	63	26	378	18
Mullaitivu	104	34,417	302	794	216	1,312	114	43	159	26
Batticaloa	325	129,187	2,180	3,551	120	5,851	59	36	1,077	22
Ampara	396	153,675	1,968	5,609	360	7,937	78	27	427	19
Trincomalee	248	95,471	905	3,077	178	4,160	105	31	536	23
Kurunegala	876	309,327	7,542	11,549	869	19,960	41	27	356	15
Puttalam	342	159,547	2,025	4,514	229	6,768	79	35	697	24
Anuradhapura	543	173,294	2,616	6,438	1,297	10,351	66	27	134	17
Polonnaruwa	231	78,454	976	2,379	423	3,778	80	33	185	21
Badulla	570	182,753	3,213	7,338	1,197	11,748	57	25	153	16
Monaragala	262	96,846	1,607	3,475	599	5,681	60	28	162	17
Ratnapura	578	208,986	4,347	6,828	441	11,616	48	31	474	18
Kegalle	521	158,023	3,399	6,368	383	10,150	46	25	413	16
Sri Lanka	9,662	3,929,234	74,218	127,382	11,083	212,683	53	31	355	18

Source - School Census 2008, Provisional

16 teachers still working in temporary closed schools. Those teachers are not included in this table

* Untrained teachers include volunteers teacher paid by other than the government.

Table 17 - Gross pupil teacher ratio by functional grade of school, sex of students and district

District	Functional grade of school				Sex of students		
	1AB	1C	Type 2	Type 3	Boys	Girls	Mixed
Colombo	25	21	18	24	25	24	21
Gampaha	27	22	18	24	26	29	22
Kalutara	25	21	15	16	28	26	20
Kandy	21	16	12	16	23	22	15
Matale	22	15	11	15	24	22	15
NuwaraEliya	20	19	14	14	17	19	17
Galle	25	18	12	19	24	25	18
Matara	22	16	11	19	24	21	15
Hambanthota	24	16	11	21	18	31	16
Jaffna	20	18	15	17	19	20	17
Kilinochchi	32	32	31	28	0	0	31
Mannar	23	28	25	23	22	22	26
Vavuniya	19	18	18	14	0	0	18
Mullaitivu	30	31	25	18	0	0	26
Batticaloa	21	24	23	21	25	25	22
Ampara	22	20	18	15	21	20	19
Trincomalee	23	26	21	20	21	24	23
Kurunegala	21	17	11	11	24	24	15
Puttalam	28	26	19	25	27	31	23
Anuradhapura	24	19	13	13	20	26	17
Polonnaruwa	26	23	17	13	0	0	21
Badulla	20	16	12	11	20	22	15
Monaragala	24	18	14	9	4	0	17
Ratnapura	23	20	14	17	24	1	18
Kegalle	21	16	11	14	22	26	15
Sri Lanka	23	19	15	17	24	24	18

Source - School Census 2008, Provisional

16 teachers still working in temporary closed schools. Those teachers are not included in this table

Table 18 - Gross pupil teacher ratios by medium of instruction of school and district

District	Medium of instruction					
	Sinhala only	Tamil only	Sinhala and Tamil	Sinhala and English	Tamil and English	Sinhala Tamil and English
Colombo	21	18	20	26	25	25
Gampaha	21	21	0	27	27	25
Kalutara	20	21	27	22	27	24
Kandy	14	17	16	21	25	22
Matale	15	13	8	23	23	0
NuwaraEliya	13	20	19	20	21	22
Galle	18	20	19	25	11	0
Matara	15	19	24	21	30	11
Hambanthota	15	18	0	26	0	0
Jaffna	0	16	0	0	20	0
Kilinochchi	0	31	0	0	0	0
Mannar	0	26	0	0	21	0
Vavuniya	14	18	0	0	19	0
Mullaitivu	0	26	0	0	26	0
Batticaloa	0	22	0	0	24	0
Ampara	18	19	0	28	21	0
Trincomalee	18	25	11	23	23	0
Kurunegala	14	17	0	22	23	0
Puttalam	21	29	28	29	26	23
Anuradhapura	16	16	14	25	0	0
Polonnaruwa	20	24	0	25	0	0
Badulla	13	18	0	21	20	15
Monaragala	16	17	0	22	0	0
Ratnapura	16	22	0	23	24	23
Kegalle	14	16	0	21	19	0
Sri Lanka	16	20	20	24	22	23

Source - School Census 2008, Provisional

16 teachers still working in temporary closed schools. Those teachers are not included in this table

Table 19 - Schools by gross pupil teacher ratio and district

District	Pupil teacher ratio grouped															Total
	One student per teacher	Two students per teacher	Tree students per teacher	Four students per teacher	Five students per teacher	Six students per teacher	Seven students per teacher	Eight students per teacher	Nine students per teacher	10-20 students per teacher	21-30 students per teacher	31-40 students per teacher	41-50 students per teacher	51-75 students per teacher	76-100 students per teacher	
Colombo	0	0	0	1	6	7	9	9	10	171	173	17	0	0	0	403
Gampaha	1	1	3	3	5	10	17	17	19	214	216	29	0	0	0	535
Kalutara	0	2	2	10	10	24	20	24	18	169	113	9	1	0	0	402
Kandy	1	6	19	18	27	35	31	44	30	330	89	7	0	0	0	637
Matale	1	2	13	10	21	12	20	21	20	153	30	3	0	0	0	306
NuwaraEliya	1	2	9	18	17	22	13	20	24	274	106	9	0	1	0	516
Galle	0	5	4	6	12	23	22	28	28	200	85	10	0	0	0	423
Matara	0	6	10	24	22	15	28	24	23	147	57	5	0	0	0	361
Hambanthota	2	3	6	16	11	24	22	19	18	149	36	4	0	0	0	310
Jaffna	0	0	0	1	6	10	14	17	18	254	74	3	0	0	0	397
Kilinochchi	0	0	0	0	0	0	0	0	0	16	35	24	11	1	4	91
Mannar	0	0	0	0	3	0	0	3	1	34	27	7	10	7	5	99
Vavuniya	1	0	0	3	3	1	4	13	7	94	35	16	4	3	1	186
Mullaitivu	0	0	0	0	1	0	1	2	0	38	35	21	5	1	0	104
Batticaloa	0	1	0	2	2	3	3	8	6	125	144	27	3	1	0	325
Ampara	0	0	2	4	8	8	9	14	16	209	117	8	1	0	0	396
Trincomalee	0	0	2	1	3	7	3	3	3	98	71	30	18	8	1	248
Kurunegala	3	16	30	52	67	48	71	61	49	386	88	5	0	0	0	876
Puttalam	0	0	2	1	3	5	5	5	16	145	114	41	3	2	0	342
Anuradhapura	0	3	13	20	36	40	34	36	36	247	73	5	0	0	0	543
Polonnaruwa	0	1	3	0	7	7	6	15	10	110	60	9	3	0	0	231
Badulla	0	8	16	18	33	34	35	37	21	273	81	12	1	1	0	570
Monaragala	2	7	5	8	13	11	7	17	15	112	62	3	0	0	0	262
Ratnapura	1	7	9	19	20	28	30	37	25	281	104	14	1	2	0	578
Kegalle	1	9	18	43	38	32	27	29	38	223	60	1	2	0	0	521
Sri Lanka	14	79	166	278	374	406	431	503	451	4,452	2,085	319	63	27	11	9,662

Source - School Census 2008, Provisional.

16 teachers still working in temporary closed schools. Those teachers are not included in this table

Table 20 - Schools by functional grade , sex of students and gross pupil teacher ratio group

Pupil teacher ratio grouped	Functional grade				Sex of students			Total
	1AB	1C	Type 2	Type 3	Boys	Girls	Mixed	
One student per teacher	0	0	2	12	1	3	10	14
Two students per teacher	0	2	29	48	3	0	76	79
Tree students per teacher	0	0	56	110	1	0	165	166
Four students per teacher	0	3	125	150	1	0	277	278
Five students per teacher	0	5	181	188	2	0	372	374
Six students per teacher	1	15	213	177	1	0	405	406
Seven students per teacher	1	24	230	176	1	0	430	431
Eight students per teacher	0	24	284	195	0	2	501	503
Nine students per teacher	0	39	262	150	0	0	451	451
10-20 students per teacher	220	1,146	2,082	1,004	38	43	4,371	4,452
21-30 students per teacher	436	601	563	485	78	130	1,877	2,085
31-40 students per teacher	37	57	101	124	4	17	298	319
41- 50 students per teacher	1	14	24	24	1	0	62	63
51-75 students per teacher	0	6	7	14	0	0	27	27
76-100 students per teacher	2	0	5	4	0	0	11	11
101 and above students per teacher	0	1	2	0	0	0	3	3
Total	698	1,937	4,166	2,861	131	195	9,336	9,662

Source - School Census 2008, Provisional.

16 teachers still working in temporary closed schools. Those teachers are not included in this table

Table 21 - Schools by Medium of instructions and gross pupil teacher ratio group

Pupil teacher ratio grouped	Medium of instruction						Total
	Sinhala medium only	Tamil medium only	Sinhala and Tamil media	Sinhala and English media	Tamil and English media	Sinhala, Tamil and English media	
One student per teacher	13	1	0	0	0	0	14
Two students per teacher	73	6	0	0	0	0	79
Tree students per teacher	163	3	0	0	0	0	166
Four students per teacher	260	18	0	0	0	0	278
Five students per teacher	337	36	1	0	0	0	374
Six students per teacher	357	47	1	1	0	0	406
Seven students per teacher	377	53	0	1	0	0	431
Eight students per teacher	404	98	1	0	0	0	503
Nine students per teacher	363	86	2	0	0	0	451
10-20 students per teacher	2,902	1,402	18	77	46	7	4,452
21-30 students per teacher	1,025	755	17	209	58	21	2,085
31-40 students per teacher	111	186	1	16	5	0	319
41- 50 students per teacher	3	59	0	1	0	0	63
51-75 students per teacher	0	27	0	0	0	0	27
76-100 students per teacher	0	11	0	0	0	0	11
101 and above students per teacher	0	3	0	0	0	0	3
Total	6,388	2,791	41	305	109	28	9,662

Source - School Census 2008, Provisional.

16 teachers still working in temporary closed schools. Those teachers are not included in this table

Table 22 - Schools by gross pupil teacher ratio and number of teachers in school

Number of teachers in school	Pupil teacher ratio grouped															Total	
	One student per teacher	Two students per teacher	Tree students per teacher	Four students per teacher	Five students per teacher	Six students per teacher	Seven students per teacher	Eight students per teacher	Nine students per teacher	10-20 students per teacher	21-30 students per teacher	31-40 students per teacher	41- 50 students per teacher	51-75 students per teacher	76-100 students per teacher		101 and above students per teacher
One teacher	1	3	3	2	2	3	3	5	2	35	30	14	7	4	4	2	120
Two teachers	1	7	9	14	19	8	15	15	18	58	22	8	6	6	2	1	209
Tree teachers	3	11	14	16	26	23	19	22	11	96	22	12	9	4	3	0	291
Four teachers	3	14	19	23	24	30	23	39	21	166	42	12	4	1	1	0	422
Five teachers	2	11	28	30	38	39	36	32	26	166	29	13	1	1	0	0	452
Six teachers	0	8	17	25	29	39	29	38	31	194	72	7	1	2	0	0	492
Seven teachers	1	5	21	25	35	33	20	35	17	160	55	6	4	1	0	0	418
Eight teachers	1	2	9	18	17	16	22	20	19	115	46	9	3	1	1	0	299
Nine teachers	0	3	8	13	12	19	19	10	19	84	38	12	4	1	0	0	242
Ten teachers	0	6	6	15	20	16	16	15	15	110	36	11	2	0	0	0	268
11-15 teachers	1	5	22	58	88	92	106	142	124	811	217	44	6	5	0	0	1,721
16-20 teachers	0	2	6	27	40	49	81	86	92	838	199	28	5	0	0	0	1,453
21-25 teachers	1	0	3	9	10	26	25	27	32	461	153	37	8	0	0	0	792
26-30 teachers	0	0	0	3	11	6	13	11	17	310	130	27	1	0	0	0	529
31-40 teachers	0	0	0	0	3	3	3	4	7	383	258	27	1	1	0	0	690
41-50 teachers	0	0	0	0	0	2	0	1	0	202	179	22	0	0	0	0	406
51-60 teachers	0	0	0	0	0	0	0	0	0	117	125	7	0	0	0	0	249
61-70 teachers	0	0	0	0	0	0	0	1	0	69	102	2	0	0	0	0	174
71-80 teachers	0	0	0	0	0	0	0	0	0	25	71	6	1	0	0	0	103
81-90 teachers	0	0	0	0	0	0	0	0	0	13	72	4	0	0	0	0	89
91-100 teachers	0	1	1	0	0	0	0	0	0	11	38	5	0	0	0	0	56
101-150 teachers	0	0	0	0	0	0	1	0	0	24	120	4	0	0	0	0	149
151 teachers	0	1	0	0	0	2	0	0	0	4	29	2	0	0	0	0	38
Total	14	79	166	278	374	406	431	503	451	4,452	2,085	319	63	27	11	3	9,662

Source - School Census 2008, Provisional.

16 teachers still working in temporary closed schools. Those teachers are not included in this table

Table 23 - Grade one new admissions by gender, medium of study and district

District	Sinhala medium			Tamil medium			English medium			Total		
	Male	Female	Total	Male	Female	Total	Male	Female	Total	Male	Female	Total
Colombo	13,000	12,721	25,721	1,487	1,485	2,972	5	4	9	14,492	14,210	28,702
Gampaha	14,160	14,206	28,366	720	732	1,452	-	-	-	14,880	14,938	29,818
Kalutara	8,180	7,678	15,858	1,210	1,254	2,464	-	-	-	9,390	8,932	18,322
Kandy	8,171	8,234	16,405	3,009	2,899	5,908	-	-	-	11,180	11,133	22,313
Matale	3,334	3,225	6,559	735	782	1,517	-	-	-	4,069	4,007	8,076
NuwaraEliya	2,572	2,582	5,154	4,475	4,379	8,854	-	-	-	7,047	6,961	14,008
Galle	8,709	8,369	17,078	219	207	426	-	-	-	8,928	8,576	17,504
Matara	6,486	6,051	12,537	361	326	687	-	-	-	6,847	6,377	13,224
Hambanthota	4,919	4,964	9,883	103	122	225	-	-	-	5,022	5,086	10,108
Jaffna	-	-	-	4,072	3,905	7,977	-	-	-	4,072	3,905	7,977
Kilinochchi	-	-	-	1,649	1,678	3,327	-	-	-	1,649	1,678	3,327
Mannar	-	-	-	1,238	1,201	2,439	-	-	-	1,238	1,201	2,439
Vavuniya	101	97	198	1,633	1,507	3,140	-	-	-	1,734	1,604	3,338
Mullaitivu	-	-	-	1,600	1,546	3,146	-	-	-	1,600	1,546	3,146
Batticaloa	-	-	-	5,935	5,647	11,582	-	-	-	5,935	5,647	11,582
Ampara	2,344	2,255	4,599	4,154	4,086	8,240	-	-	-	6,498	6,341	12,839
Trincomalee	906	871	1,777	3,244	3,195	6,439	-	-	-	4,150	4,066	8,216
Kurunegala	11,777	11,510	23,287	1,108	1,218	2,326	-	-	-	12,885	12,728	25,613
Puttalam	4,987	4,928	9,915	2,040	2,004	4,044	-	-	-	7,027	6,932	13,959
Anuradhapura	6,813	6,514	13,327	874	780	1,654	-	-	-	7,687	7,294	14,981
Polonnaruwa	3,058	2,899	5,957	377	384	761	-	-	-	3,435	3,283	6,718
Badulla	5,371	5,335	10,706	2,304	2,200	4,504	3	8	11	7,678	7,543	15,221
Monaragala	3,678	3,635	7,313	203	191	394	-	-	-	3,881	3,826	7,707
Ratnapura	7,677	7,422	15,099	1,303	1,208	2,511	-	-	-	8,980	8,630	17,610
Kegalle	5,739	5,590	11,329	1,178	1,193	2,371	-	-	-	6,917	6,783	13,700
Sri Lanka	121,982	119,086	241,068	45,231	44,129	89,360	8	12	20	167,221	163,227	330,448

Source - School Census 2008, Provisional.

Table 24 - Grade one new admissions by gender, functional grade of school and district

District	Functional grade								All schools		
	1AB		1C		Type 2		Type 3				
	Male	Female	Male	Female	Male	Female	Male	Female	Male	Female	Total
Colombo	5,600	4,924	2,809	3,354	3,915	3,687	2,168	2,245	14,492	14,210	28,702
Gampaha	2,489	2,829	3,573	3,673	4,373	3,999	4,445	4,437	14,880	14,938	29,818
Kalutara	3,088	2,546	2,885	2,816	2,414	2,533	1,003	1,037	9,390	8,932	18,322
Kandy	2,564	2,589	3,763	4,149	2,975	2,383	1,878	2,012	11,180	11,133	22,313
Matale	672	732	1,307	1,321	937	921	1,153	1,033	4,069	4,007	8,076
NuwaraEliya	1,015	1,026	1,950	1,972	1,992	1,994	2,090	1,969	7,047	6,961	14,008
Galle	3,300	3,184	2,537	2,485	1,612	1,454	1,479	1,453	8,928	8,576	17,504
Matara	1,513	1,261	1,891	1,815	1,807	1,735	1,636	1,566	6,847	6,377	13,224
Hambanthota	895	915	1,364	1,374	1,242	1,211	1,521	1,586	5,022	5,086	10,108
Jaffna	422	537	632	588	1,310	1,200	1,708	1,580	4,072	3,905	7,977
Kilinochchi	192	211	435	450	645	653	377	364	1,649	1,678	3,327
Mannar	259	201	363	385	303	320	313	295	1,238	1,201	2,439
Vavuniya	391	405	433	377	431	393	479	429	1,734	1,604	3,338
Mullaitivu	62	82	380	378	783	766	375	320	1,600	1,546	3,146
Batticaloa	888	751	1,194	1,341	1,960	1,918	1,893	1,637	5,935	5,647	11,582
Ampara	821	1,014	1,709	1,663	2,440	2,221	1,528	1,443	6,498	6,341	12,839
Trincomalee	729	664	1,313	1,336	1,247	1,350	861	716	4,150	4,066	8,216
Kurunegala	2,519	2,521	5,112	4,981	3,600	3,529	1,654	1,697	12,885	12,728	25,613
Puttalam	1,057	758	2,391	2,524	2,729	2,495	850	1,155	7,027	6,932	13,959
Anuradhapura	872	889	2,635	2,487	2,511	2,379	1,669	1,539	7,687	7,294	14,981
Polonnaruwa	808	762	1,218	1,192	884	836	525	493	3,435	3,283	6,718
Badulla	1,832	1,992	2,669	2,559	2,136	2,064	1,041	928	7,678	7,543	15,221
Monaragala	968	942	1,311	1,346	1,319	1,252	283	286	3,881	3,826	7,707
Ratnapura	1,154	1,329	2,904	2,621	3,023	2,930	1,899	1,750	8,980	8,630	17,610
Kegalle	1,394	1,411	1,998	1,973	1,919	1,903	1,606	1,496	6,917	6,783	13,700
Sri Lanka	35,504	34,475	48,776	49,160	48,507	46,126	34,434	33,466	167,221	163,227	330,448

Source - School Census 2008, Provisional.

Table 25 - Schools by functional grade, sex of students and size of grade one new admissions

Grade 1 new admissions grouped	Functional grade				Sex of students			Total
	1AB	1C	Type 2	Type 3	Boys	Girls	Mixed	
Non Admissions	3	4	50	64	6	3	112	121
One Admissions	0	1	51	89	1	0	140	141
Two Admissions	0	0	62	110	1	0	171	172
Tree Admissions	0	1	77	157	2	1	232	235
Four Admissions	0	1	113	153	1	0	266	267
Five Admissions	0	4	128	148	0	0	280	280
Six Admissions	0	6	123	162	0	0	291	291
Seven Admissions	0	9	154	150	0	0	313	313
Eight Admissions	0	9	177	115	2	1	298	301
Nine Admissions	1	4	166	146	1	1	315	317
10-15 Admissions	3	96	870	558	1	4	1,522	1,527
16-20 Admissions	3	122	589	248	2	2	958	962
21-25 Admissions	4	141	419	188	4	5	743	752
26-30 Admissions	8	128	303	109	3	1	544	548
31-40 Admissions	10	269	382	121	5	10	767	782
41-60 Admissions	41	431	261	88	7	19	795	821
61-80 Admissions	52	248	102	64	15	18	433	466
81-100 Admissions	52	136	37	43	7	16	245	268
101-125 Admissions	88	122	31	30	10	25	236	271
126 - 150 Admissions	60	38	15	33	9	13	124	146
151-200 Admissions	104	31	20	48	19	27	157	203
201-250 Admissions	53	9	5	21	10	15	63	88
Admissions above 251	36	3	7	16	11	11	40	62
Total	518	1,813	4,142	2,861	117	172	9,045	9,334

Source - School Census 2008 , Provisional

Note : This table not includes 328 schools not having primary classes

Table 26 - Schools by medium of instructions and size of grade one new admissions

Grade 1 new admissions grouped	Medium of instruction						Total
	Sinhala medium only	Tamil medium only	Sinhala and Tamil media	Sinhala and English media	Tamil and English media	Sinhala, Tamil and English media	
Non Admissions	110	8	0	3	0	0	121
One Admissions	120	21	0	0	0	0	141
Two Admissions	141	31	0	0	0	0	172
Tree Admissions	190	45	0	0	0	0	235
Four Admissions	198	69	0	0	0	0	267
Five Admissions	209	71	0	0	0	0	280
Six Admissions	224	67	0	0	0	0	291
Seven Admissions	225	87	1	0	0	0	313
Eight Admissions	215	82	4	0	0	0	301
Nine Admissions	209	108	0	0	0	0	317
10-15 Admissions	1,053	471	0	1	2	0	1,527
16-20 Admissions	631	327	2	0	2	0	962
21-25 Admissions	450	296	2	0	4	0	752
26-30 Admissions	321	218	3	0	6	0	548
31-40 Admissions	479	293	5	1	2	2	782
41-60 Admissions	483	308	3	12	15	0	821
61-80 Admissions	310	130	4	8	14	0	466
81-100 Admissions	174	61	6	17	8	2	268
101-125 Admissions	190	35	4	25	15	2	271
126 - 150 Admissions	90	18	2	24	9	3	146
151-200 Admissions	111	15	1	60	10	6	203
201-250 Admissions	41	3	2	36	3	3	88
Admissions above 251	24	3	0	29	0	6	62
Total	6,198	2,767	39	216	90	24	9,334

Source - School Census 2008 , Provisional

Note : This table not includes 328 schools, not having primary classes

Table 27 - Schools by size of grade one new admissions and district

District	Grade 1 new admissions grouped																					Total		
	Non Admissions	One Admissions	Two Admissions	Three Admissions	Four Admissions	Five Admissions	Six Admissions	Seven Admissions	Eight Admissions	Nine Admissions	10-15 Admissions	16-20 Admissions	21-25 Admissions	26-30 Admissions	31-40 Admissions	41-60 Admissions	61-80 Admissions	81-100 Admissions	101-125 Admissions	126 - 150 Admissions	151-200 Admissions		201-250 Admissions	Admissions above 251
Colombo	3	1	3	2	6	0	2	6	5	8	38	33	25	18	34	34	36	27	28	21	25	14	16	385
Gampaha	6	1	1	4	3	5	3	9	7	5	48	40	35	22	58	65	45	29	30	21	25	13	7	482
Kalutara	3	4	7	11	9	10	11	6	10	15	66	34	24	20	34	22	26	17	20	16	14	6	5	390
Kandy	10	11	14	17	17	18	21	16	21	22	100	53	47	40	41	57	24	15	24	8	20	6	4	606
Matale	7	6	7	13	12	9	11	10	9	8	56	37	24	19	17	13	12	6	8	4	4	2	0	294
NuwaraEliya	6	6	4	6	11	15	17	12	7	13	90	68	56	39	59	60	15	12	12	1	1	0	0	510
Galle	9	12	6	7	12	15	9	21	9	19	69	36	22	16	33	25	17	13	15	11	16	11	4	407
Matara	5	8	8	14	12	8	12	11	12	9	53	28	17	18	25	31	14	11	11	9	11	4	4	335
Hambanthota	3	6	7	8	7	9	9	10	8	10	55	39	19	15	25	17	13	5	5	2	7	2	6	287
Jaffna	2	3	7	7	8	12	12	21	23	23	78	42	39	27	20	26	13	4	1	1	1	0	1	371
Kilinochchi	0	0	0	0	1	1	3	3	4	1	11	7	12	3	16	14	5	7	0	0	1	1	0	90
Mannar	0	2	0	2	1	6	1	8	5	5	16	9	10	5	9	14	3	2	1	0	0	0	0	99
Vavuniya	2	2	9	13	20	17	14	11	5	9	26	16	9	5	8	13	1	1	0	2	3	0	0	186
Mullaitivu	1	2	1	3	2	0	2	3	1	4	17	10	10	8	11	14	7	2	0	1	2	0	0	101
Batticaloa	0	4	1	5	3	3	4	6	13	10	41	35	35	18	45	43	27	12	9	3	5	0	0	322
Ampara	1	2	2	3	9	14	13	6	16	5	62	45	43	42	35	41	20	16	6	4	5	1	1	392
Trincomalee	1	0	4	3	3	6	1	4	6	7	32	35	32	18	25	38	11	7	7	2	3	0	0	245
Kurunegala	18	14	20	19	32	42	36	40	35	27	150	89	57	40	59	64	39	14	24	13	11	9	2	854
Puttalam	1	1	1	2	6	6	5	7	10	16	60	29	27	20	29	35	27	14	15	8	6	5	1	331
Anuradhapura	8	9	3	17	17	16	23	23	29	21	109	57	33	33	40	45	21	4	9	2	7	2	5	533
Polonnaruwa	2	4	7	4	8	1	5	12	6	9	37	29	26	18	17	16	11	7	4	4	2	1	0	230
Badulla	8	13	15	14	19	22	20	27	18	20	90	72	48	32	37	46	29	8	11	3	9	2	0	563
Monaragala	6	4	10	14	7	7	4	8	5	12	52	27	12	16	24	21	11	3	8	3	6	0	1	261
Ratnapura	7	8	17	20	29	18	28	14	15	21	87	52	49	28	51	43	26	14	13	3	9	6	3	561
Kegalle	12	18	18	27	13	20	25	19	22	18	84	40	41	28	30	24	13	18	10	4	10	3	2	499
Total	121	141	172	235	267	280	291	313	301	317	1527	962	752	548	782	821	466	268	271	146	203	88	62	9334

Source - School Census 2008 , Provisional

Note : This table not includes 327schools not having primary classes

Table 28 - Private schools and their students and teachers

District	Private schools		Special education		Total	Students			Teachers		
	Fee levying	Non Fee levying	Fee levying	Non Fee levying		Male	Female	Total	Male	Female	Total
Colombo	13	17	4	-	34	31160	30393	61553	582	2388	2970
Gampaha	5	3	3	-	11	9076	9337	18413	148	552	700
Kalutara	3	2	2	1	8	2889	4184	7073	46	258	304
Kandy	1	5	-	1	7	4953	4036	8989	99	402	501
Matale	1	-	1	-	2	68	760	828	3	41	44
Nuwaraeliy	2	-	-	-	2	739	497	1236	4	43	47
Galle	-	-	3	-	3	182	252	434	10	36	46
Matara	3	1	1	-	5	184	3257	3441	30	137	167
Hambantot	2	-	1	-	3	435	822	1257	22	48	70
Jaffna	3	2	1	-	6	4661	3394	8055	151	192	343
Batticaloe	-	-	1	-	1	26	10	36	1	6	7
Kurunegala	1	-	1	-	2	268	647	915	7	77	84
Puttalam	1	-	-	-	1	46	57	103	5	15	20
Anuradapu	-	1	1	-	2	59	51	110	8	12	20
Badulla	-	3	1	-	4	2198	127	2325	62	92	154
Moneragala	-	-	1	-	1	51	38	89	9	6	15
Ratnapura	1	-	0	-	1	39	38	77	8	7	15
Kegalle	-	-	1	-	1	72	88	160		12	12
Sri Lanka	36	34	22	2	94	57106	57988	115094	1195	4324	5519

Source: School Census (Private school -2008) provisional

Note: There are no Private schools in Kilinochchi, Mannar, Vavuniya, Mullativu, Ampara, Trincomalee and Polonnaruwa Districts

Table 29 - Pirivenas and their students and teachers

District	Pirivenas				Students			Teachers		
	Mulika	Maha	Vidyayathana	Total	Clergy	Laity	Total	Clergy	Laity	Total
Colombo	29	8	4	41	2,004	1,203	3,207	216	138	354
Gampaha	37	16	2	55	2,635	2,011	4,646	251	218	469
Kalutara	28	10	8	46	2,271	2,613	4,884	228	252	480
Kandy	43	22	6	71	3,450	2,132	5,582	302	260	562
Matale	10	9	0	19	865	409	1,274	75	59	134
Nuwara Eliya	9	2	0	11	577	59	636	46	30	76
Galle	48	16	4	68	2,606	1,216	3,822	260	240	500
Matara	44	10	7	61	2,437	2,650	5,087	249	384	633
Hambantota	18	6	1	25	1,269	568	1,837	84	127	211
Vavuniya	0	0	1	1	30	246	276	6	14	20
Ampara	16	1	0	17	753	138	891	45	40	85
Trincomalee	6	0	0	6	231	69	300	15	10	25
Kurunegala	40	33	4	77	3,478	3,706	7,184	323	427	750
Puttlam	7	4	0	11	541	170	711	35	31	66
Anuradhapura	29	8	3	40	1,877	993	2,870	154	151	305
Polonnaruwa	8	6	0	14	930	393	1,323	50	50	100
Badulla	22	9	3	34	1,366	1,251	2,617	124	152	276
Monaragala	11	5	2	18	777	865	1,642	68	117	185
Ratnapura	27	7	5	39	1,181	2,434	3,615	153	189	342
Kegalle	16	17	4	37	1,971	1,792	3,763	153	180	333
Sri Lanka	448	189	54	691	31,249	24,918	56,167	2,837	3,069	5,906

Source – School Census (Pirivenas)2008, Provisional

Note : There are no Pirivanas in Jaffna, Kilinochchi, Mannar, Mullaitivu, and Batticaloa Districts

Table 30 - Teacher Training College (TTCs) and National Colleges of Education (NCsOE)

	Teacher Training Colleges	National Colleges of Educations
No . of Colleges	10	17
No . Of Teacher Traninees	1,337	8,888
No . Of Teacher Educators	137	475
No . Passed out during the inter censual period	395	2,657

Source : School Census (TTCs & NCsOE) 2008 Provisional .

**MILLENNIUM DEVELOPMENT
GOALS ON EDUCATION
IN SRI LANKA**

Section II

Millennium Development Goals (MDG)

Indicators on Education in Sri Lanka

A statistical review of MDGs on education in Sri Lanka is presented in this section. Eight goals have been identified and Goal 2 and Goal 3 are mainly on education. The first Goal is poverty eradication. While all MDG goals are inter related, a main determinant of other MDGs is poverty.

Goal 2 of the Millennium Declaration is to achieve universal primary education. The target set for this goal is to ensure that, by 2015, children every where, boys and girls alike will be able to complete a full course of primary schooling. Achieving universal education is also a strategy to reduce poverty and expand the options available to both girls and boys. Four indicators are used to track progress: net enrolment ratio in primary education, proportion of pupils starting grade 1 who reach grade 5, primary completion rate and literacy rate of 15-24 year olds. Only first three indicators have been used in this report which can be calculated using Annual School Census data.

Promoting gender equality and empowering women is the third Millennium Development Goal. The target for this goal is to eliminate gender disparity in primary and secondary education preferably by 2005 and in all levels of education no later than 2015. Two indicators related to education for monitoring progress of Goal 3 are ratio of girls to boys in primary school, secondary and tertiary education and ratio of literate women to men 15-24 years old. Access to education and the ability to read and write are the essence of empowerment. Ratio of girls to boys in primary and secondary education can be calculated using school census data and used to prepare this report. Secondary education can be divided into junior secondary (upto Grade 11) and senior secondary (A/L classes) levels and the indicators have been calculated for the whole level and for the two sub levels. Senior secondary level again sub divided in to streams and the indicator has been calculated by streams.

UN definitions and method of computation for each indicator was carefully examined before the computation was done. If the UN definition is different from what has been used, methods used are also given with a clarification for each indicator. Considering the national requirement, each indicator is given not only at national level but also at province, district and by gender where ever possible. These indicators have been presented in Tables and Graphs for analysis of trends and identification of disparities. The tabulations prepared at national and sub national levels for each indicator included in this section.

The Millennium Development Goals now constitute a central focus of national development. The country is potentially on track on most of the indicators described in these MDG goals. Among the key achievement are access to safe drinking water, equitable primary education, literacy, child and maternal health. A significant achievement is that there is no gender disparity in these achievements. However, there remain considerable challenges. The critical challenge is that 23% of Sri Lanka's population is still living below the national poverty line.

Sri Lanka has already achieved some of the goals of millennium declaration.

GOAL 2

Achieve Universal Primary Education

Target

3. Ensure that, by 2015, children every where, boys and girls alike, will be able to complete full course of primary schooling.

GOAL 3

Promote Gender Equality and Empower Women

Target

4. Eliminate gender disparity in primary and secondary education, preferably by 2005, and in all levels of education no later than 2015.

Definitions, methods of computations and other information of MDG indicators on education

Indicator 6: Net enrolment ratio in primary education (NER)

UNESCO Definition:

The net enrolment in primary education is the enrolment in the primary education level of the official school age group expressed as a percentage of the corresponding population.

Definition used:

Same as UNESCO definition.

Method of computation:

The net enrolment ratio in primary education is defined as the number of students in primary level who are at the official primary school age- group, divided by the total population of official primary school ages, expressed as percentage.

$$\text{NER}_{\text{Pri, t}} = \frac{\text{Enrolment of the official primary school age- group in the primary education level in school year t}}{\text{Population of official primary school age group in school year t}} \times 100$$

Note : Primary Education level – Grade 1-5
Official age for primary education – Years 5-9

Data sources:

Annual school Census
Estimated population given by Register General Office (RGO)

Level of disaggregations:

The NER has been calculated by sex and geographical regions in the country (Province & District).

Geographical coverage:

NER covered the whole country.

Time Period:

The NER has been calculated from the year 1998 to 2007 for all the years.

Limitations:

- **Problem of getting population data:**

Although the annual school census covered the whole Island, three sources have been used to estimate the population information for the whole country.

Sources used to estimate the population data:

Census of population and housing -2001

Special Enumeration conducted in the Eastern province and the Jaffna district in the Northern province.

Administrative data – Births, deaths and international migration data

- **Problem of internal migration of students:**

Student information- Students are enumerated at the school level

Population information – Population information collected at the household level

As some of students cross the district boundaries to go to school, student migration factor also can be affected, when the NER is been calculated at the district level.

- **Problem of getting age level information of students in Private Schools, Special Schools and Pirivenas :**

Although the annual school census covered Private Schools, Special Schools and Pirivenas in the country other than the Government Schools, it was difficult to get the age level data in these Private Schools, Special Schools and Pirivenas. Therefore these calculations have been done by using only the Government school information.

Indicator 6b: Gross enrolment ratio in primary education (GER)

UNESCO Definition:

The GER in primary education is the total enrolment for the primary education level, regardless of age, expressed as a percentage of the official school age population of primary school age in a given school year.

Definition used:

Same as UNESCO definition.

Method of computation:

The gross enrolment ratio for primary education is defined as the total number of pupils in the primary level, divided by the total population of official primary school ages, expressed as a percentage.

$$\text{GER}_{\text{Pri, t}} = \frac{\text{Total enrolment at the primary education level in school year t}}{\text{Population of the official primary school age group in school year t}} \times 100$$

Note : Primary Education level – Grade 1-5
Official age for primary education – Years 5-9

Data sources:

Annual school Census
Estimated population given by Register General Office (RGO)

Level of disaggregations:

The GER has been calculated by sex and geographical regions in the country (Province & District).

Geographical coverage:

GER covered the whole country.

Time Period:

The GER has been calculated from the year 1998 to 2007 for all the years.

Limitations:

- **Problem of getting population data**
- **Problem of internal migration of students**
- **Problem of getting age level information of students in Private Schools, Special Schools and Pirivenas**

Indicator 7: Proportion of Pupils Starting Grade 1 Who Reach Grade 5 Survival Rate to Grade 5 (SR)

UNESCO Definition:

Survival Rate to Grade 5 is the proportion of a cohort of pupils who reached grade 5 expressed as a percentage of pupils enrolled in the first grade of a given cycle in a given school year.

Definition used:

As we did not have cohort information of students, we used a proxy method to calculate this survival rate.

Method of computation:

The Survival Rate to Grade 5 is defined as the number of new students in grade 5 in year t, divided by the new entrants to grade 1 in year t-4, expressed as a percentage.

$$SR_{Gr5,t} = \frac{\text{Total enrolment in grade 5 in year t} - \text{Number of repeaters in grade 5 in school year t}}{\text{Number of new entrants in grade 1 in school year t-4}} \times 100$$

Data sources:

Annual school Census

Level of disaggregations:

The SR has been calculated by sex and geographical regions in the country (Province & District).

Geographical coverage:

SER covered the whole country.

Time Period:

The SR has been calculated for the years 1996, 1997 and from the year 2000 to 2007 for all the years.

Limitations:

- **Problem of internal migration of students**
- **Problem of getting age level information of students in Private Schools, Special Schools and Pirivenas**

Indicator 7a: Primary Completion Rate (PCR)

UNESCO Definition:

Primary completion measured by the Gross Intake Ratio to last grade of primary education is the total number of new entrants in the last grade of primary education, regardless of age, expressed as percentage of the total population of the theoretical entrance age to the last grade of primary.

Definition used:

The Primary completion rate is defined as the number of students in the last grade of primary level who are at the official school age, divided by the total population of the official entrance age to the last grade of primary, expressed as a percentage.

Method of computation:

Primary completion rate is calculated by dividing the number of students in the last grade of primary education who are at the official school age, divided by the population of the official entrance age to the last grade of primary.

$$PCR_{5,t} = \frac{\text{Number of students in the last grade of primary education who are in the official school age in school year } t}{\text{Population of the official entrance age to the last grade of primary in school year } t} \times 100$$

Note : Last Grade of Primary Education level – Grade 5
Official entrance age to the last grade of primary – 9 Years

Data sources:

Annual school Census
Estimated population given by Register General Office (RGO)

Level of disaggregations:

The PCR has been calculated by sex and geographical regions in the country (Province & District).

Geographical coverage:

PCR covered the whole country.

Time Period:

The PCR has been calculated from the year 1998 to 2007 for all the years.

Limitations:

- **Problem of getting population data**
- **Problem of internal migration of students**
- **Problem of getting age level information of students in Private Schools, Special Schools and Pirivenas**

Indicator 9a: Ratio of Girls to Boys in Primary, Secondary and Tertiary Education Gender Parity Index (GPI)

UNESCO Definition:

Number of female enrolment expressed as a percentage of male enrolment in one particular education level such as Primary, Secondary, Vocational and Technical.

Definition used:

Same as UNESCO definition.

Method of computation:

GPI for Primary Education Level (GPI_{Pri, t})

Divide the total number of female enrolment in primary education level in school year t by the total number of male enrolment in primary education level in school year t, and expressed as a percentage.

$$\text{GPI}_{\text{Pri, t}} = \frac{\text{Total female enrolment at the primary education level in school-year t}}{\text{Total male enrolment at the primary education level in school-year t}} \times 100$$

Note : GPI has been calculated by primary, secondary and junior secondary education levels and also by the streams in G.C.E. (A/L) classes.

Primary education level – Grade 1-5

Secondary education level – Grade 6-13

Junior secondary education level – Grade 6-11

Streams in G.C.E.(A/L) - Science, Arts and Commerce in A/L classes
(Grade 12 & 13)

Data sources:

Annual school Census

Level of disaggregations:

The GPI has been calculated by levels of education and geographical regions in the country (Province & District).

Geographical coverage:

GPI covered the whole country.

Time Period:

The GPI has been calculated from the year 1991 to 2007 for all the years except 1995.

Limitations:

- **Problem of internal migration of students**
- **Problem of getting age level information of students in Private Schools, Special Schools and Pirivenas**

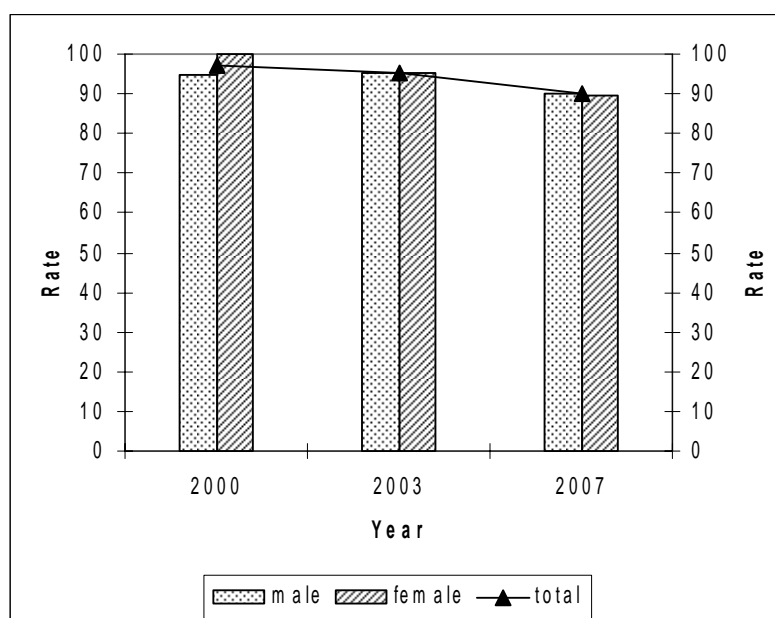
Trends in MDG indicators on education

Indicator 6: Net enrolment ratio in primary education (NER)

Table 2.1: Trends in NER at Primary Level

NER Year	Total	Male	Female
1998	101.2	100.6	101.8
1999	98.4	95.8	101.2
2000	97.3	94.7	100.2
2001	100.0	99.7	100.4
2002	98.0	98.1	98.0
2003	95.2	95.1	95.4
2004	92.9	92.1	93.0
2005	90.7	90.6	90.9
2006	89.8	89.4	89.8
2007	89.9	90.1	89.3

Graph 2.1: Net enrolment ratio in primary education by sex

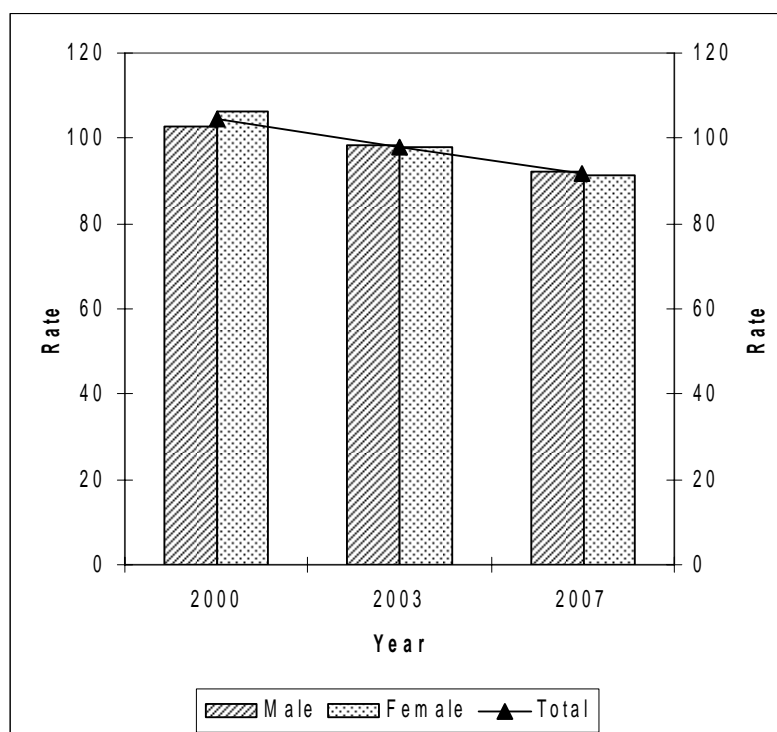


Indicator 6b: Gross enrolment ratio in primary education (GER)

Table 2.2 :- Trends in GER at Primary Level

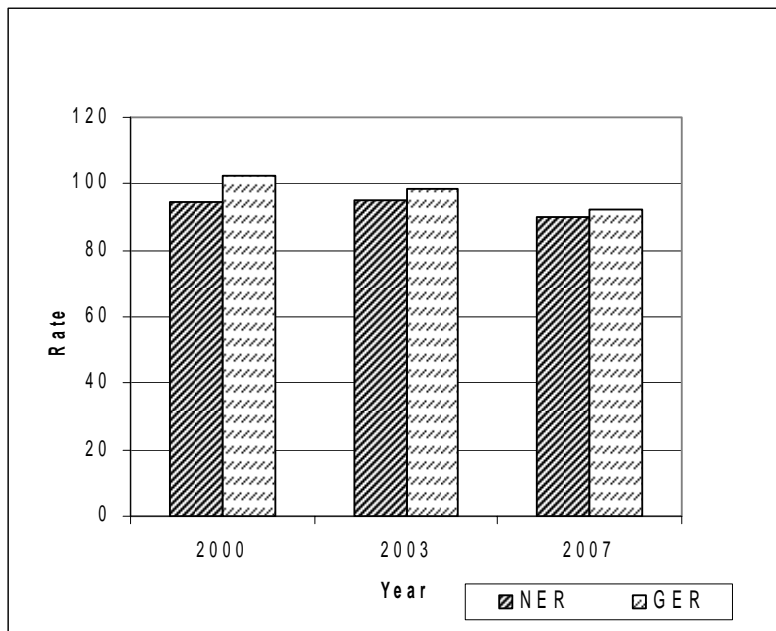
Year \ GER	Total	Male	Female
1998	109.9	110.6	109.2
1999	105.9	104.2	107.7
2000	104.4	102.6	106.4
2001	106.3	106.9	105.8
2002	102.9	103.6	102.3
2003	98.1	98.3	97.9
2004	95.2	94.5	95.9
2005	92.8	92.9	92.8
2006	91.9	92.0	91.8
2007	91.8	92.2	91.4

Graph 2.2: Gross enrolment rate in primary education by sex

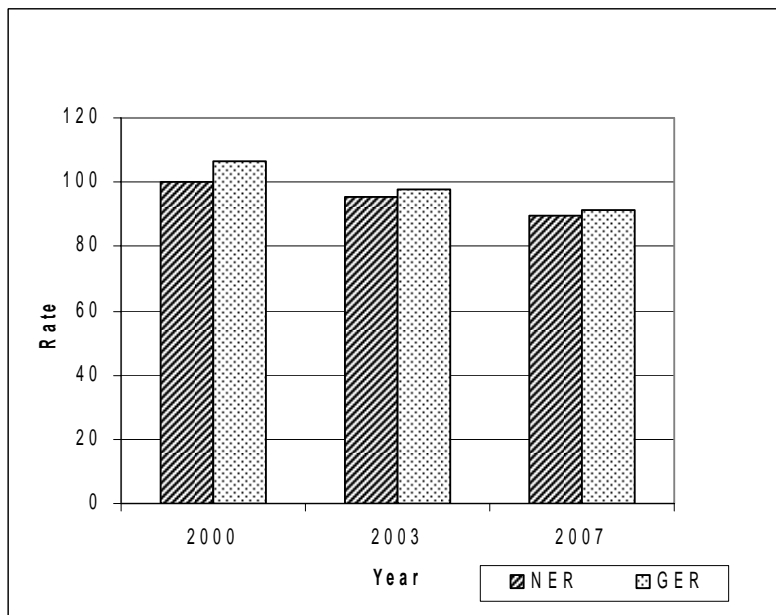


Net and Gross enrolment ratio in primary education

Graph 2.3: Net and Gross enrolment rates in primary education for boys



Graph 2.4: Net and Gross enrolment rates in primary education for girls



Indicator 7: Proportion of Pupils Starting Grade 1 Who Reach Grade 5

Table 2.3: Trends in SR to grade 05

SR Year	Total	Male	Female
1996	98.1	98.1	98.2
1997	102.8	115.2	92.5
2000	103.9	104.7	103.1
2001	101.2	101.6	100.8
2002	107.2	108.7	105.6
2003	100.7	100.7	100.8
2004	100.0	99.7	100.3
2005	99.0	98.6	99.3
2006	98.5	98.7	99.2
2007	99.5	99.3	99.7

Graph 2.5: Survival rate to Grade 5 by sex

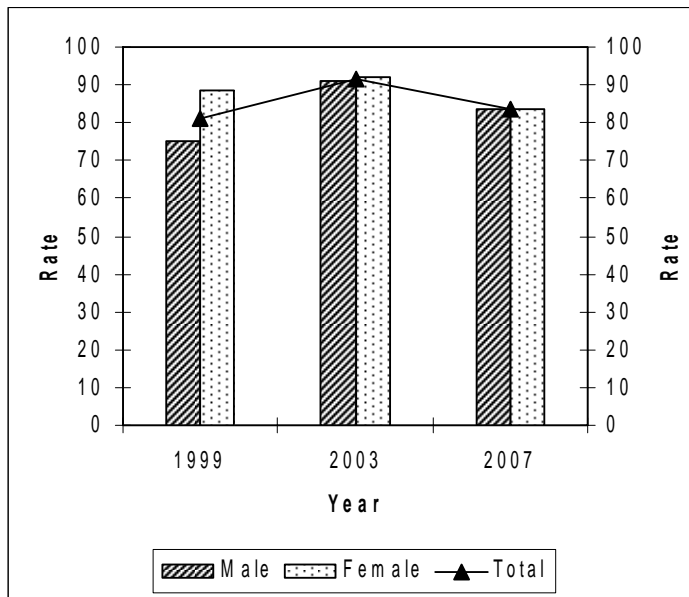


Indicator 7a: Primary Completion Rate (PCR)

Table 2.4: Trends in PCR

Year \ PCR	Total	Male	Female
1998	78.5	75.5	81.7
1999	81.3	75.0	88.5
2000	76.4	72.2	81.0
2001	87.1	84.9	89.4
2002	92.7	92.1	93.3
2003	91.8	91.3	92.2
2004	83.9	89.6	78.1
2005	87.7	87.1	88.2
2006	86.1	86.0	86.2
2007	83.6	83.6	83.6

Graph 2.6: Primary completion rate by sex

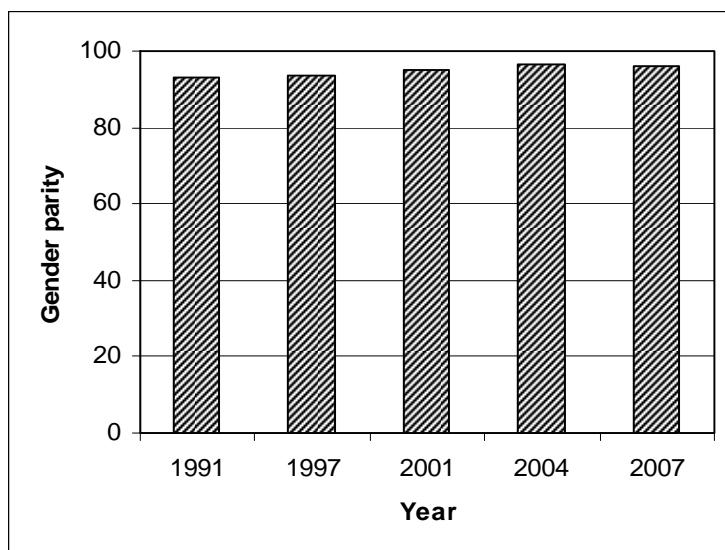


Indicator 9a: Ratio of Girls to Boys in Primary, Secondary and Tertiary Education

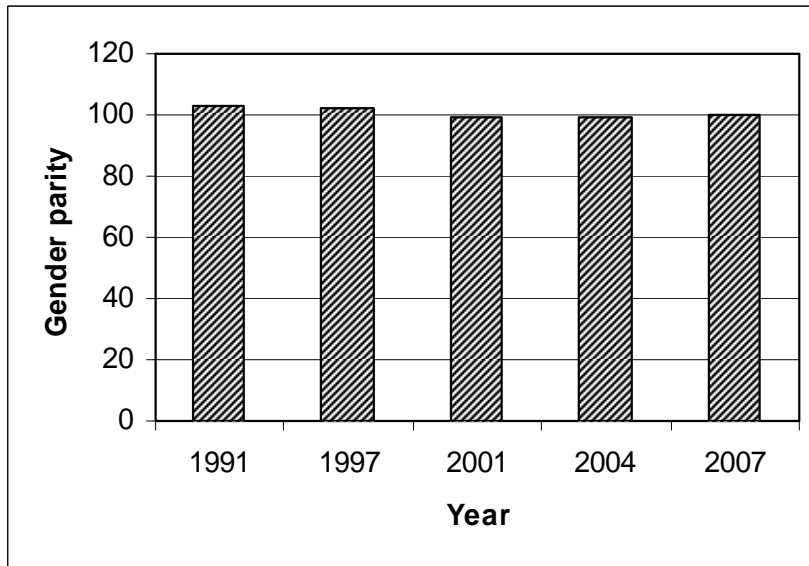
Table 2.5: Trends in GPI at primary and secondary levels

Year \ GPI	Primary (Grade 1-5)	Junior Secondary (Grade 6-11)	Secondary (Grade 6-13)
1991	93.0	103.1	105.9
1992	93.0	102.7	105.3
1993	93.1	102.3	104.9
1994	93.0	102.1	104.5
1996	93.5	102.1	104.5
1997	93.8	101.9	104.7
1998	94.2	101.9	105.2
1999	94.7	101.0	104.3
2000	94.9	99.9	104.6
2001	95.3	99.6	104.2
2002	95.7	99.0	102.7
2003	96.4	98.9	102.5
2004	96.4	99.4	102.7
2005	96.4	99.7	104.0
2006	96.3	100.2	103.6
2007	96.2	100.3	105.0

Graph 2.7: Gender parity in primary education level (Grade 1-5)



Graph 2.8: Gender parity in junior secondary education level (Grade 6-11)



Graph 2.9: Gender parity in secondary education level (Grade 6-13)

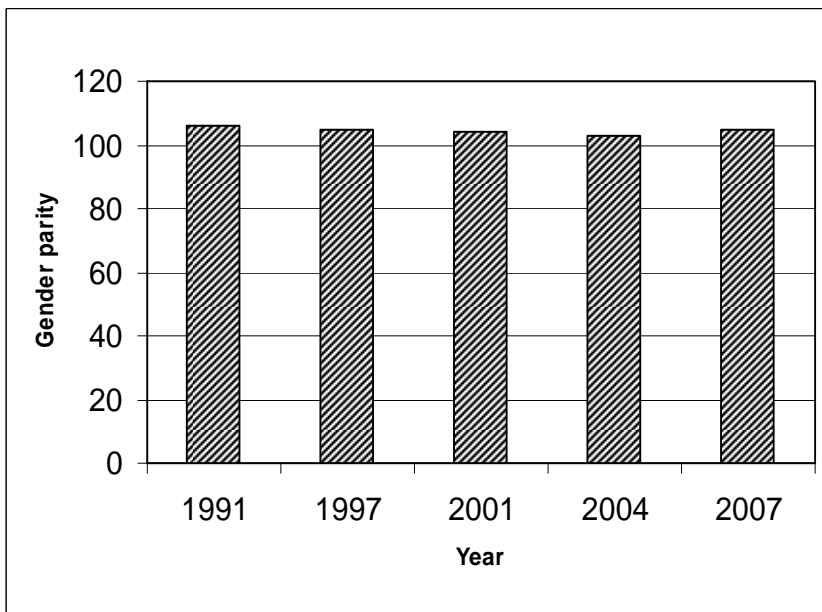


Table 2.6: Trends in GPI by streams in A/L classes

GPI in A/L Year	All A/L	Science	Arts	Commerce
1991	139.5	85.4	232.7	107.2
1992	137.8	87.0	220.7	105.1
1993	137.4	83.5	219.7	103.6
1994	131.8	79.9	207.3	98.1
1996	131.3	77.6	203.1	92.5
1997	133.4	79.6	203.2	91.4
1998	135.4	80.5	201.8	94.9
1999	131.5	80.1	197.3	94.0
2000	131.8	87.7	194.0	95.9
2001	129.6	88.2	190.6	94.4
2002	129.2	88.7	186.1	94.2
2003	130.9	92.1	187.9	95.7
2004	130.0	91.4	191.4	95.8
2005	129.5	90.5	193.7	95.5
2006	130.7	89.9	196.0	88.8
2007	132.2	91.1	199.4	90.6

Graph 2.10: Gender parity in A/L by stream and total

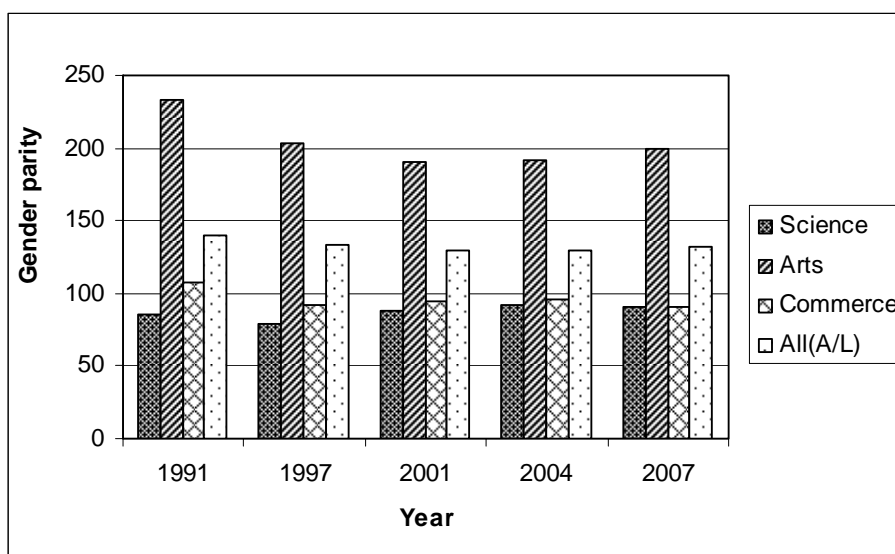


Table 1: Net Enrolment Rates for the primary education level by province and district, 1998-2007

District	1998			1999			2000			2001			2002		
	Male	Female	Total	Male	Female	Total	Male	Female	Total	Male	Female	Total	Male	Female	Total
Sri Lanka	100.6	101.8	101.2	95.8	101.2	98.4	94.7	100.2	97.3	99.7	100.4	100.0	98.0	98.0	98.0
Western	99.6	100.2	99.9	94.5	100.4	97.3	94.5	100.3	97.3	89.6	90.5	90.0	89.7	89.5	89.6
Colombo	91.1	90.6	90.9	86.9	88.3	87.6	86.9	88.4	87.6	88.8	88.8	88.8	88.4	86.8	87.6
Gampaha	108.5	110.1	109.3	101.6	116.1	108.3	101.9	116.8	108.7	87.4	89.8	88.6	87.8	89.7	88.7
Kalutara	102.2	103.3	102.7	98.1	100.5	99.3	97.5	99.3	98.4	94.8	94.7	94.8	95.6	94.0	94.8
Central	106.0	104.4	105.2	98.8	100.4	99.6	96.4	98.7	97.5	98.1	98.1	98.1	96.9	95.7	96.3
Kandy	96.8	95.4	96.1	90.3	91.3	90.8	88.1	90.5	89.3	96.8	96.9	96.9	96.1	94.7	95.4
Matale	100.1	99.0	99.6	93.8	97.2	95.4	92.9	94.8	93.8	99.1	98.8	99.0	97.4	97.2	97.3
Nuwara Eliya	131.0	128.8	129.9	121.5	122.8	122.2	117.4	119.9	118.6	99.7	99.7	99.7	97.9	96.5	97.2
Southern	98.3	98.6	98.4	93.8	94.8	94.3	92.6	93.5	93.0	100.3	100.6	100.5	98.6	98.0	98.3
Galle	100.5	101.8	101.1	96.1	97.3	96.7	95.5	95.9	95.7	101.2	101.9	101.5	99.0	99.2	99.1
Matara	92.5	91.8	92.2	88.6	87.4	88.0	87.0	86.1	86.6	97.7	97.0	97.4	96.6	94.3	95.5
Hambantota	102.8	102.8	102.8	97.2	101.4	99.3	95.6	100.1	97.8	102.0	103.5	102.7	100.5	101.1	100.8
Northern	83.8	95.9	89.3	84.0	97.2	90.0	82.6	96.3	88.8	122.4	132.1	127.0	112.7	120.8	116.5
Jaffna	55.6	60.3	57.8	56.1	61.4	58.6	54.6	60.3	57.2	112.6	114.8	113.7	101.1	102.5	101.8
Kilinochchi	143.7	158.0	150.4	142.3	158.6	149.9	135.7	152.7	143.6	133.6	162.7	146.5	101.7	124.3	111.7
Mannar	72.4	91.9	80.8	77.3	98.4	86.4	76.9	101.5	87.5	75.3	93.4	83.3	117.8	148.5	131.4
Vavuniya	153.3	199.3	172.7	159.4	209.2	180.4	161.9	217.0	185.2	157.4	164.7	160.9	163.2	172.2	167.5
Mulaitivu	172.1	231.0	197.0	157.2	214.5	181.4	154.9	207.5	177.1	169.0	178.0	173.4	112.1	117.4	114.7
Eastern	100.4	102.3	101.3	101.5	105.6	103.5	103.6	108.1	105.8	110.8	109.7	110.3	105.0	108.2	106.6
Batticaloa	91.7	89.1	90.4	91.4	91.4	91.4	93.7	94.6	94.2	100.0	96.4	98.2	94.2	96.9	95.5
Ampara	115.0	111.6	113.3	116.3	114.0	115.2	118.2	115.7	117.0	119.4	117.0	118.2	113.5	112.4	113.0
Trincomalee	91.9	107.6	99.0	94.2	114.2	103.1	96.5	116.9	105.6	112.7	118.5	115.5	107.9	119.3	113.3
North Western	102.4	100.9	101.7	97.9	100.8	99.3	96.0	99.3	97.6	101.1	100.6	100.9	101.2	99.1	100.2
Kurunegala	100.9	99.5	100.2	96.3	99.3	97.7	93.9	96.8	95.3	101.7	101.0	101.3	101.2	98.9	100.1
Puttalam	105.3	103.8	104.5	101.0	103.7	102.3	100.3	104.2	102.2	100.2	99.9	100.1	101.2	99.4	100.3
North Central	102.2	103.2	102.7	94.2	107.4	100.3	91.9	105.0	97.9	102.4	103.6	103.0	101.6	101.2	101.4
Anuradhapura	100.7	102.9	101.8	93.7	105.0	99.0	91.4	102.2	96.4	104.4	105.8	105.1	101.3	101.2	101.3
Polonnaruwa	105.7	104.0	104.8	95.5	113.0	103.3	93.0	111.7	101.3	98.0	98.9	98.4	102.1	101.2	101.7
Uva	103.6	106.3	104.9	95.0	106.3	100.3	94.4	105.1	99.4	99.4	101.6	100.5	98.4	98.7	98.5
Badulla	103.2	106.0	104.6	95.4	102.5	98.8	94.4	101.1	97.6	99.1	101.5	100.3	98.0	98.6	98.3
Monaragala	104.3	106.9	105.6	94.3	113.6	103.0	94.4	112.8	102.7	100.0	102.0	101.0	98.9	99.0	98.9
Sabaragamuwa	107.8	107.1	107.5	100.9	104.4	102.6	98.1	101.0	99.5	99.8	98.3	99.1	98.0	96.2	97.1
Ratnapura	109.6	109.1	109.3	101.2	106.2	103.6	98.0	101.9	99.9	99.5	97.6	98.5	97.5	95.2	96.4
Kegalle	105.4	104.3	104.8	100.6	102.0	101.3	98.1	99.7	98.9	100.2	99.3	99.8	98.6	97.5	98.1

Table 1: Net Enrolment Rates for the primary education level by province and district, 1998-2007 (Continue)

District	2003			2004			2005			2006			2007		
	Male	Female	Total	Male	Female	Total	Male	Female	Total	Male	Female	Total	Male	Female	Total
Sri Lanka	95.1	95.3	95.2	92.1	93.8	92.9	90.5	90.9	90.7	89.7	89.8	89.8	90.1	89.6	89.9
Western	88.7	88.7	88.7	86.8	88.2	87.5	86.1	86.3	86.2	85.9	85.9	85.9	85.9	85.4	85.7
Colombo	87.2	86.2	86.7	84.6	80.8	82.7	83.5	82.2	82.8	82.4	81.1	81.7	81.5	79.6	80.5
Gampaha	86.9	89.0	87.9	85.2	92.3	88.6	85.0	87.3	86.1	85.4	87.3	86.3	85.4	87.2	86.3
Kalutara	95.1	93.2	94.2	93.9	95.6	94.7	93.2	92.3	92.7	94.0	92.5	93.3	95.6	93.6	94.6
Central	92.7	92.1	92.4	90.2	92.9	91.5	87.9	86.2	87.0	87.0	85.9	86.5	87.3	86.5	86.9
Kandy	92.1	91.5	91.8	89.2	94.1	91.5	87.2	85.8	86.5	85.1	85.0	85.1	84.9	84.9	84.9
Matale	93.5	93.0	93.3	90.6	90.2	90.4	87.2	86.0	86.6	87.3	86.3	86.8	87.2	87.8	87.5
Nuwara Eliya	93.4	92.4	92.9	91.5	92.5	92.0	89.4	87.1	88.2	90.1	87.3	88.7	91.3	88.5	89.9
Southern	94.6	93.7	94.1	91.9	95.9	93.8	89.6	88.8	89.2	88.6	87.2	87.9	87.7	86.1	86.9
Galle	96.3	96.0	96.2	95.1	101.1	97.9	92.9	93.2	93.0	92.3	91.2	91.8	91.0	90.3	90.7
Matara	92.1	89.5	90.8	88.4	92.6	90.4	86.7	84.1	85.4	85.7	83.1	84.4	85.0	81.8	83.4
Hambantota	95.0	95.3	95.1	91.1	91.6	91.3	87.8	87.6	87.7	86.2	85.8	86.0	85.5	84.6	85.1
Northern	108.3	113.6	110.9	103.6	109.6	106.5	104.2	111.0	107.4	102.6	109.3	105.8	102.8	109.4	106.0
Jaffna	99.8	99.9	99.8	96.8	98.5	97.6	96.9	98.5	97.7	92.2	93.8	93.0	90.2	91.5	90.8
Kilinochchi	99.0	107.2	102.9	94.5	108.0	100.7	100.3	114.5	106.8	108.1	124.3	115.6	119.8	135.5	127.0
Mannar	111.5	141.3	124.7	110.7	136.1	122.0	113.1	144.8	127.1	114.8	144.6	128.0	116.7	145.5	129.4
Vavuniya	161.9	176.1	168.6	148.9	158.1	153.3	141.3	150.6	145.7	132.8	141.9	137.2	115.7	125.6	120.4
Mulaitivu	96.6	99.9	98.2	90.3	93.9	92.0	93.8	99.3	96.4	99.7	105.7	102.6	110.5	117.9	114.1
Eastern	101.8	108.1	104.8	99.0	106.3	102.5	98.3	106.5	102.2	96.8	105.4	100.8	104.1	105.9	105.0
Batticaloa	93.6	98.8	96.1	92.9	98.0	95.3	93.0	99.7	96.1	92.5	99.2	95.7	101.9	102.1	102.0
Ampara	110.4	111.3	110.8	106.0	109.3	107.6	103.4	107.5	105.4	100.8	105.3	103.0	106.0	105.8	105.9
Trincomalee	101.0	117.5	108.4	97.8	114.5	105.3	98.6	115.8	106.3	97.3	115.2	105.2	104.3	112.2	108.0
North Western	99.0	97.0	98.0	95.2	93.4	94.3	94.3	92.2	93.3	94.1	91.6	92.9	94.1	91.6	92.9
Kurunegala	98.8	97.0	97.9	94.7	93.4	94.0	93.4	92.4	92.9	93.6	92.0	92.8	93.9	92.7	93.3
Puttalam	99.2	97.0	98.1	96.2	93.2	94.7	95.7	92.0	93.9	95.1	90.9	93.0	94.5	89.6	92.1
North Central	97.9	97.5	97.7	92.9	91.9	92.4	89.4	88.2	88.8	89.4	88.4	88.9	89.0	88.6	88.8
Anuradhapura	98.1	97.8	98.0	93.7	92.6	93.2	90.6	89.2	89.9	90.9	89.7	90.3	90.2	89.6	89.9
Polonnaruwa	97.5	96.7	97.1	91.3	90.5	90.9	86.9	86.1	86.5	86.2	85.6	85.9	86.5	86.5	86.5
Uva	94.0	95.1	94.6	89.9	90.8	90.3	86.9	87.9	87.4	84.6	85.0	84.8	83.0	83.3	83.2
Badulla	93.6	95.2	94.4	90.5	91.6	91.1	88.6	90.3	89.4	87.2	87.5	87.3	85.8	86.0	85.9
Monaragala	94.8	95.0	94.9	88.8	89.2	89.0	84.0	83.7	83.8	80.1	80.6	80.4	78.1	78.4	78.3
Sabaragamuwa	94.8	92.5	93.6	91.7	89.9	90.8	89.8	88.1	88.9	88.6	85.8	87.2	88.8	86.6	87.7
Ratnapura	93.3	90.5	91.9	89.5	87.1	88.3	86.4	84.5	85.5	83.8	80.9	82.3	83.5	81.7	82.6
Kegalle	96.8	95.4	96.1	94.9	94.0	94.4	94.7	93.3	94.0	95.7	93.0	94.3	96.5	93.7	95.1

Table 2: Gross Enrolment Rates for the primary education level by province and district, 1998-2007

District	1998			1999			2000			2001			2002		
	Male	Female	Total	Male	Female	Total	Male	Female	Total	Male	Female	Total	Male	Female	Total
Sri Lanka	110.6	109.2	109.9	104.2	107.7	105.9	102.6	106.4	104.4	106.9	105.8	106.3	103.6	102.3	102.9
Western	105.6	104.8	105.2	99.3	104.1	101.6	98.8	103.6	101.1	92.4	92.7	92.6	91.8	91.1	91.5
Colombo	95.7	94.8	95.3	90.8	92.1	91.4	90.6	91.6	91.1	91.3	91.0	91.2	90.5	88.9	89.7
Gampaha	115.3	115.0	115.1	106.5	119.9	112.7	106.0	119.9	112.4	90.0	91.7	90.8	89.3	90.7	90.0
Kalutara	109.6	107.9	108.8	104.5	104.2	104.4	103.0	103.0	103.0	99.1	97.7	98.4	98.9	96.2	97.6
Central	118.8	114.2	116.5	108.8	108.7	108.8	106.0	106.7	106.4	106.6	104.6	105.6	102.9	100.5	101.7
Kandy	105.1	101.2	103.2	96.6	96.6	96.6	94.3	95.3	94.8	103.0	101.4	102.2	100.0	97.8	98.9
Matale	110.6	106.2	108.4	101.2	102.7	101.9	99.1	100.7	99.9	104.9	103.1	104.0	101.3	100.1	100.7
Nuwara Eliya	155.8	149.4	152.6	141.8	140.2	141.0	137.1	136.4	136.7	113.5	110.8	112.2	108.8	105.3	107.1
Southern	106.6	103.7	105.2	101.2	99.7	100.5	99.4	97.6	98.5	106.3	104.3	105.3	102.9	100.8	101.8
Galle	108.0	106.8	107.4	103.3	102.2	102.8	101.6	99.7	100.6	106.2	105.2	105.7	103.1	102.1	102.6
Matara	100.7	96.9	98.9	95.6	91.6	93.6	93.5	90.0	91.7	104.0	100.8	102.4	101.0	96.7	98.9
Hambantota	112.6	108.3	110.5	105.7	107.0	106.4	103.9	105.2	104.5	109.5	107.7	108.6	105.0	103.8	104.4
Northern	94.2	105.5	99.3	93.4	105.4	98.9	92.6	105.2	98.3	135.5	142.8	138.9	123.1	129.4	126.1
Jaffna	61.9	64.9	63.3	62.0	66.1	63.9	61.2	65.2	63.0	122.6	122.3	122.4	108.6	108.3	108.5
Kilinochchi	162.6	176.1	168.9	157.9	173.6	165.2	153.0	169.0	160.5	149.7	177.9	162.2	113.3	135.0	122.9
Mannar	83.3	103.1	91.8	88.4	108.0	96.8	88.1	111.9	98.3	86.2	102.5	93.4	133.2	162.2	146.0
Vavuniya	171.3	222.8	193.1	176.1	226.8	197.6	179.1	236.4	203.4	172.9	178.5	175.6	177.1	183.9	180.4
Mulaitivu	196.8	257.6	222.5	175.8	233.3	200.2	174.6	228.2	197.3	190.4	195.5	192.9	124.0	127.9	125.9
Eastern	114.7	114.6	114.6	114.4	116.7	115.5	115.6	118.4	117.0	123.2	120.0	121.6	115.5	117.5	116.5
Batticaloa	104.9	100.6	102.8	103.2	101.4	102.3	105.1	104.2	104.7	112.0	106.4	109.2	104.5	106.5	105.4
Ampara	130.5	123.4	127.0	130.1	125.2	127.7	131.1	125.7	128.4	131.3	126.9	129.2	123.8	121.0	122.4
Trincomalee	105.7	121.9	113.0	107.6	126.9	116.2	108.2	128.8	117.4	126.3	130.0	128.1	119.0	129.2	123.8
North Western	112.7	107.6	110.2	106.5	106.9	106.7	104.3	105.3	104.8	108.0	105.4	106.7	106.6	102.8	104.7
Kurunegala	108.9	104.4	106.7	103.0	103.6	103.3	100.2	101.2	100.6	107.2	104.9	106.1	105.4	101.8	103.6
Puttalam	120.3	114.0	117.2	113.5	113.5	113.5	112.4	113.4	112.9	109.4	106.4	107.9	108.8	104.5	106.7
North Central	112.1	109.8	110.9	102.4	114.1	107.8	99.3	111.1	104.8	108.5	108.0	108.2	106.7	105.1	105.9
Anuradhapura	110.8	109.4	110.1	102.2	111.7	106.6	99.2	108.4	103.5	110.9	110.3	110.6	106.9	105.3	106.1
Polonnaruwa	114.9	110.8	112.9	103.0	120.0	110.6	99.5	117.6	107.6	103.5	102.9	103.2	106.2	104.5	105.4
Uva	117.8	116.6	117.2	106.1	115.1	110.3	104.5	113.3	108.6	109.6	109.3	109.5	106.1	104.9	105.5
Badulla	118.4	116.9	117.6	107.8	112.2	109.9	105.5	110.1	107.7	110.4	109.9	110.2	106.9	105.8	106.4
Monaragala	116.7	116.2	116.4	103.1	120.7	111.1	102.7	119.5	110.3	108.3	108.3	108.3	104.6	103.2	103.9
Sabaragamuwa	117.9	114.0	116.0	109.5	110.6	110.0	106.3	107.2	106.7	108.0	104.4	106.3	104.0	100.6	102.3
Ratnapura	121.3	117.0	119.1	111.0	113.4	112.2	107.6	109.1	108.3	109.3	105.1	107.2	104.4	100.3	102.4
Kegalle	113.2	109.8	111.5	107.2	106.7	106.9	104.4	104.6	104.5	106.3	103.6	104.9	103.4	101.0	102.2

Table 2: Gross Enrolment Rates for the primary education level by province and district, 1998-2007 (Continue)

District	2003			2004			2005			2006			2007		
	Male	Female	Total	Male	Female	Total	Male	Female	Total	Male	Female	Total	Male	Female	Total
Sri Lanka	98.3	97.8	98.1	94.5	95.9	95.2	92.9	92.8	92.8	92.0	91.8	91.9	92.2	91.4	91.8
Western	90.0	89.7	89.9	87.8	89.0	88.4	87.1	87.1	87.1	86.7	86.6	86.6	86.9	86.5	86.7
Colombo	88.5	87.3	87.9	85.6	81.7	83.7	84.4	82.9	83.7	83.1	81.7	82.4	82.2	80.6	81.4
Gampaha	88.0	89.8	88.9	86.1	93.1	89.4	85.8	87.9	86.8	85.9	87.7	86.8	86.1	88.0	87.1
Kalutara	96.6	94.2	95.4	95.1	96.6	95.8	95.1	93.7	94.4	95.4	93.8	94.6	97.3	95.0	96.2
Central	96.2	95.0	95.6	92.7	95.3	94.0	90.5	88.7	89.6	89.6	88.2	88.9	89.6	88.4	89.0
Kandy	94.4	93.5	93.9	90.8	95.8	93.2	88.7	87.2	87.9	86.9	86.5	86.7	86.2	86.1	86.2
Matale	95.4	94.7	95.0	92.5	91.6	92.1	88.7	87.3	88.0	88.8	87.7	88.3	89.1	88.9	89.0
Nuwara Eliya	99.6	97.7	98.7	96.1	96.6	96.4	94.6	92.1	93.3	94.7	91.4	93.0	95.8	92.0	93.9
Southern	96.7	95.1	95.9	93.4	97.1	95.2	91.1	89.9	90.5	90.0	88.2	89.1	88.9	87.1	88.0
Galle	98.4	97.5	98.0	96.3	102.1	99.0	94.3	94.2	94.3	93.3	92.0	92.7	92.0	91.1	91.6
Matara	94.1	90.8	92.5	90.6	94.2	92.3	88.4	85.3	86.9	87.5	84.4	86.0	86.6	83.3	84.9
Hambantota	97.2	96.9	97.0	92.3	92.6	92.5	89.1	88.6	88.9	87.5	86.9	87.2	86.6	85.4	86.0
Northern	115.3	119.3	117.2	108.8	113.9	111.3	108.8	114.7	111.7	107.7	113.4	110.4	106.9	112.6	109.6
Jaffna	105.4	103.9	104.7	100.6	101.2	100.9	100.2	101.1	100.6	96.3	96.6	96.4	93.1	93.4	93.2
Kilinochchi	105.3	113.5	109.2	100.0	113.6	106.3	105.9	119.6	112.2	112.9	128.6	120.2	124.2	139.1	131.1
Mannar	120.6	149.1	133.2	117.9	141.7	128.4	119.0	150.0	132.8	120.8	150.6	134.0	122.9	152.0	135.8
Vavuniya	173.8	186.4	179.8	157.3	165.7	161.3	148.7	156.3	152.3	140.5	148.4	144.3	122.3	131.2	126.5
Mulaitivu	103.6	105.7	104.6	96.8	99.5	98.1	99.0	104.0	101.4	105.8	110.8	108.2	114.6	120.9	117.6
Eastern	109.3	114.9	112.0	105.0	111.8	108.2	104.2	112.0	107.8	102.5	111.0	106.4	109.5	110.8	110.2
Batticaloa	101.0	106.3	103.5	99.2	103.9	101.4	99.3	106.0	102.5	99.5	106.1	102.6	108.7	108.3	108.5
Ampara	117.9	117.5	117.7	112.3	114.6	113.4	109.2	112.3	110.7	106.2	110.6	108.3	111.4	110.2	110.8
Trincomalee	108.5	124.3	115.7	102.9	119.5	110.4	103.8	121.0	111.5	101.2	119.5	109.3	107.8	115.9	111.6
North Western	101.6	99.0	100.3	97.7	95.3	96.5	96.3	93.7	95.0	95.9	93.3	94.6	96.1	93.1	94.6
Kurunegala	100.8	98.5	99.7	96.4	94.8	95.6	94.9	93.3	94.1	94.7	93.0	93.9	95.2	93.8	94.5
Puttalam	103.0	99.9	101.5	100.0	96.2	98.1	98.6	94.4	96.5	98.1	93.7	95.9	97.7	91.9	94.8
North Central	99.7	98.7	99.2	94.3	93.0	93.6	90.7	89.2	89.9	90.6	89.5	90.1	90.4	90.0	90.2
Anuradhapura	100.2	99.3	99.7	95.1	93.6	94.4	91.8	90.2	91.0	92.1	90.8	91.5	91.5	90.9	91.2
Polonnaruwa	98.8	97.6	98.2	92.6	91.5	92.1	88.4	87.0	87.7	87.5	86.7	87.1	88.1	87.9	88.0
Uva	98.1	98.5	98.3	92.8	93.3	93.1	89.6	90.0	89.8	87.3	87.5	87.4	85.3	85.5	85.4
Badulla	98.6	99.1	98.9	94.2	94.9	94.6	91.8	92.8	92.3	90.3	90.6	90.4	88.6	88.6	88.6
Monaragala	97.4	97.3	97.3	90.4	90.5	90.4	85.7	85.0	85.3	81.9	82.1	82.0	79.6	80.1	79.8
Sabaragamuwa	98.3	95.1	96.7	94.1	91.6	92.8	92.1	89.8	90.9	91.0	88.3	89.6	90.8	88.1	89.5
Ratnapura	97.1	93.4	95.3	92.0	88.8	90.4	88.9	86.4	87.7	86.6	84.0	85.3	85.7	83.4	84.6
Kegalle	100.2	97.5	98.9	97.0	95.6	96.3	96.7	94.7	95.7	97.5	94.5	96.0	98.4	95.0	96.7

Table 3: Survival Rates to Grade 5 by province and district, 1996, 1997 and 2000-2007

District	1996			1997			2000			2001			2002		
	Male	Female	Total	Male	Female	Total	Male	Female	Total	Male	Female	Total	Male	Female	Total
Sri Lanka	98.1	98.2	98.1	115.0	92.5	102.8	104.7	103.1	103.9	101.6	100.8	101.2	108.7	105.6	107.2
Western	101.2	100.4	100.8	95.8	97.5	96.6	103.9	101.9	102.9	102.3	102.3	102.3	103.1	101.0	102.1
Colombo	101.5	100.0	100.7	97.7	98.0	97.8	104.4	101.8	103.1	102.4	102.5	102.4	103.2	101.8	102.5
Gampaha	101.5	100.7	101.1	94.6	97.4	95.9	102.9	101.3	102.1	103.3	102.9	103.1	101.1	99.5	100.3
Kalutara	100.2	100.5	100.3	94.8	97.0	95.9	104.9	103.0	103.9	100.3	100.9	100.6	106.2	102.4	104.3
Central	99.6	98.1	98.9	86.9	87.2	87.0	106.1	103.7	104.9	104.3	102.0	103.1	110.8	107.6	109.2
Kandy	103.1	101.5	102.3	93.0	94.6	93.8	105.4	102.5	103.9	102.1	101.1	101.6	108.4	106.5	107.5
Matale	103.4	101.2	102.3	91.3	92.8	92.0	103.1	104.3	103.7	104.8	102.6	103.7	106.9	103.9	105.4
Nuwara Eliya	92.9	91.9	92.4	76.7	75.1	75.9	109.2	105.2	107.2	107.5	103.0	105.3	116.9	111.4	114.2
Southern	100.3	101.2	100.7	91.5	92.7	92.1	104.4	101.5	103.0	104.4	101.7	103.1	109.7	105.3	107.5
Galle	100.5	101.4	100.9	92.9	92.3	92.6	104.1	100.2	102.2	103.4	100.8	102.1	108.1	105.2	106.6
Matara	100.1	100.8	100.5	90.1	92.5	91.3	104.1	102.5	103.3	103.5	101.6	102.6	110.9	104.2	107.6
Hambantota	100.2	101.4	100.8	91.1	93.6	92.3	105.4	102.3	103.8	107.4	103.5	105.5	110.7	106.9	108.8
Northern	87.3	87.6	87.5	90.5	90.8	90.7	112.8	113.0	112.9	98.2	99.8	99.0	110.0	106.5	108.3
Jaffna	51.4	51.5	51.5	61.3	61.3	61.3	145.5	139.8	142.7	110.8	110.4	110.6	118.7	117.3	118.0
Killinochchi	142.3	144.8	143.5	100.7	96.3	98.6	70.4	75.6	72.9	88.3	92.9	90.5	102.7	95.8	99.3
Mannar	125.6	125.2	125.4	117.5	117.9	117.7	118.0	108.4	113.2	100.4	96.3	98.4	120.6	116.0	118.4
Vavuniya	153.6	149.6	151.6	156.4	158.3	157.3	113.2	121.5	117.3	100.0	104.5	102.1	109.7	105.3	107.5
Mullaitivu	165.9	170.3	168.0	164.8	172.1	168.3	94.3	98.4	96.3	78.1	81.2	79.6	91.9	89.5	90.7
Eastern	96.9	97.5	97.2	96.1	96.4	96.2	101.6	100.3	101.0	91.7	93.5	92.6	108.5	107.3	107.9
Batticaloa	88.0	89.2	88.6	84.0	86.1	85.1	96.6	98.0	97.3	85.9	89.3	87.6	111.6	109.1	110.4
Ampara	100.3	100.4	100.3	99.8	99.7	99.8	101.2	98.8	100.0	91.9	93.1	92.5	102.6	101.1	101.8
Trincomalee	104.6	105.3	105.0	109.1	107.1	108.2	109.0	106.2	107.6	99.6	100.2	99.9	114.6	115.5	115.0
North western	98.5	100.8	99.6	90.2	92.2	91.2	106.8	105.0	105.9	102.4	100.6	101.6	108.7	105.7	107.2
Kurunegala	100.8	101.7	101.2	93.0	94.7	93.8	106.1	105.7	105.9	103.1	100.1	101.6	106.8	104.1	105.5
Puttalama	94.2	99.2	96.6	85.3	87.9	86.5	108.2	103.8	106.0	101.3	101.7	101.5	112.0	108.5	110.3
North central	98.7	96.7	97.7	91.3	92.4	91.8	105.5	104.5	105.0	102.6	101.5	102.1	113.1	109.5	111.4
Anuradhapura	96.2	95.4	95.8	93.1	94.1	93.6	105.6	104.3	105.0	102.3	100.8	101.5	112.5	108.1	110.3
Polonnaruwa	104.5	99.6	102.1	87.2	88.7	87.9	105.1	104.8	105.0	103.3	103.1	103.2	114.4	112.7	113.6
Uva	96.7	97.3	97.0	86.7	90.1	88.3	102.0	101.9	102.0	103.6	101.9	102.7	114.1	109.4	111.8
Badulla	94.9	94.8	94.9	82.4	87.5	84.9	101.6	102.4	102.0	103.0	101.5	102.2	115.6	110.5	113.0
Monaragala	99.9	102.1	101.0	95.5	95.0	95.3	102.8	100.9	101.9	104.7	102.6	103.7	111.5	107.3	109.4
Sabaragamuwa	96.0	97.2	96.6	88.0	90.2	89.1	101.8	101.2	101.5	102.8	101.4	102.1	109.3	105.2	107.3
Ratnapura	94.5	95.6	95.0	86.8	88.3	87.5	101.3	100.8	101.1	103.3	101.8	102.6	112.6	106.6	109.6
Kegalle	98.3	99.5	98.9	89.8	93.2	91.4	102.6	101.8	102.2	101.9	100.9	101.4	104.6	103.1	103.9

Table 3: Survival Rates to Grade 5 by province and district, 1996, 1997 and 2000-2007 (Continue)

District	2003			2004			2005			2006			2007		
	Male	Female	Total	Male	Female	Total	Male	Female	Total	Male	Female	Total	Male	Female	Total
Sri Lanka	100.7	100.8	100.7	99.7	100.3	100.0	98.6	99.3	98.9	98.7	99.2	98.9	99.3	99.7	99.5
Western	99.9	99.9	99.9	99.4	100.1	99.7	99.2	99.8	99.5	99.7	99.4	99.6	99.5	99.5	99.5
Colombo	100.3	99.4	99.9	99.9	99.9	99.9	100.0	99.8	99.9	100.8	100.1	100.5	100.3	98.6	99.5
Gampaha	98.9	99.8	99.3	97.9	100.0	98.9	98.3	99.2	98.7	98.6	98.9	98.7	97.7	99.9	98.8
Kalutara	100.9	100.9	100.9	101.0	100.4	100.7	99.3	100.7	100.0	99.6	99.3	99.5	101.2	100.5	100.9
Central	101.3	101.6	101.5	99.5	99.3	99.4	98.5	99.6	99.0	97.9	99.1	98.5	99.4	100.2	99.8
Kandy	100.9	102.1	101.5	100.1	100.0	100.0	99.7	100.7	100.2	99.3	99.8	99.6	99.7	101.0	100.3
Matale	99.7	101.6	100.6	98.7	98.4	98.5	98.2	99.5	98.9	96.8	97.9	97.4	99.8	100.1	100.0
Nuwara Eliya	103.0	100.9	102.0	99.1	98.8	99.0	96.5	97.9	97.2	96.4	98.4	97.4	98.7	98.9	98.8
Southern	99.0	99.8	99.4	98.8	100.8	99.7	97.8	99.5	98.6	98.4	98.4	98.4	99.6	100.1	99.8
Galle	100.1	100.3	100.2	98.7	101.0	99.8	98.0	99.9	98.9	98.0	97.4	97.7	100.2	100.0	100.1
Matara	97.6	98.5	98.0	98.7	100.0	99.3	98.3	100.0	99.1	99.4	98.3	98.9	99.0	99.8	99.4
Hambantota	98.8	100.6	99.7	99.0	101.4	100.2	96.7	98.1	97.4	97.8	100.2	99.0	99.2	100.7	100.0
Northern	100.2	100.4	100.3	101.1	98.4	99.8	92.6	94.0	93.3	100.5	100.6	100.6	102.9	103.2	103.1
Jaffna	129.0	125.3	127.2	123.1	120.4	121.8	107.5	108.4	108.0	115.1	115.7	115.4	98.5	98.8	98.6
Killinochchi	80.8	82.7	81.7	88.9	84.0	86.4	82.4	82.6	82.5	100.9	101.5	101.2	119.6	118.7	119.2
Mannar	99.1	101.6	100.3	102.3	93.7	98.0	97.4	98.1	97.7	100.1	101.5	100.8	105.9	106.5	106.2
Vavuniya	89.8	94.2	91.9	90.7	94.5	92.6	87.1	89.6	88.2	83.9	84.2	84.0	94.0	94.5	94.3
Mullaitivu	65.6	65.0	65.3	69.7	65.4	67.6	65.6	67.5	66.5	84.3	81.4	82.9	117.3	117.9	117.6
Eastern	103.6	103.1	103.3	99.7	100.5	100.0	101.7	101.8	101.7	101.5	101.9	101.7	99.0	99.0	99.0
Batticaloa	107.1	106.4	106.7	99.3	100.7	100.0	102.6	104.3	103.4	102.9	103.9	103.4	102.8	102.3	102.6
Ampara	97.9	99.1	98.4	98.2	98.5	98.3	97.7	98.2	98.0	99.3	102.1	100.7	99.2	98.0	98.6
Trincomalee	109.1	105.4	107.3	102.6	103.5	103.0	107.1	104.4	105.8	102.9	98.9	100.9	93.5	95.7	94.5
North western	99.9	100.0	100.0	99.6	99.7	99.6	99.2	98.5	98.9	97.1	98.6	97.8	98.9	98.9	98.9
Kurunegala	101.2	101.1	101.2	100.7	100.7	100.7	100.4	99.6	100.0	98.5	99.9	99.2	100.3	100.1	100.2
Puttalama	97.7	98.0	97.8	97.7	98.0	97.8	97.3	96.5	96.9	94.7	96.5	95.6	96.7	96.9	96.8
North central	101.7	102.7	102.2	101.8	102.9	102.3	100.7	101.6	101.2	98.3	98.3	98.3	98.0	99.5	98.7
Anuradhapura	99.5	100.9	100.2	99.5	101.6	100.5	98.3	99.5	98.9	98.6	98.3	98.4	98.8	99.6	99.2
Polonnaruwa	106.7	106.7	106.7	106.9	105.6	106.2	106.3	106.3	106.3	97.6	98.4	98.0	96.2	99.3	97.7
Uva	101.9	100.8	101.3	98.3	99.7	99.0	97.7	99.1	98.4	96.7	97.8	97.2	98.7	99.8	99.3
Badulla	102.5	100.9	101.7	98.1	99.4	98.7	96.8	99.5	98.1	96.7	97.4	97.1	98.7	99.2	99.0
Monaragala	100.8	100.6	100.7	98.6	100.2	99.4	99.4	98.5	99.0	96.6	98.5	97.5	98.7	100.9	99.8
Sabaragamuwa	100.8	100.1	100.4	101.0	101.9	101.5	98.6	98.9	98.8	97.2	98.0	97.6	98.2	98.2	98.2
Ratnapura	100.9	101.0	100.9	102.1	103.2	102.6	98.5	98.7	98.6	97.0	97.5	97.3	97.5	97.8	97.7
Kegalle	100.7	98.7	99.7	99.5	100.2	99.9	98.8	99.3	99.1	97.4	98.7	98.0	99.1	98.6	98.9

Table 4: Primary Completion Rates by province and district, 1998-2007

District	1998			1999			2000			2001			2002		
	Male	Female	Total	Male	Female	Total	Male	Female	Total	Male	Female	Total	Male	Female	Total
Sri Lanka	75.5	81.7	78.5	75.0	88.5	81.3	72.2	81.0	76.4	84.9	89.4	87.1	92.1	93.3	92.7
Western	82.8	84.8	83.8	79.9	88.1	83.8	77.8	85.4	81.4	83.6	86.9	85.2	86.5	87.4	86.9
Colombo	77.0	75.3	76.2	72.5	74.5	73.5	71.0	75.3	73.1	82.6	85.9	84.2	85.5	86.2	85.8
Gampaha	88.5	93.3	90.8	87.3	103.7	94.8	84.9	99.2	91.5	82.9	86.6	84.7	84.8	87.2	85.9
Kalutara	85.4	89.7	87.5	82.8	91.5	87.1	80.0	84.8	82.4	86.6	89.2	87.9	91.4	89.9	90.7
Central	75.2	77.4	76.3	73.2	76.1	74.6	67.9	70.3	69.1	80.3	81.6	81.0	89.1	87.0	88.1
Kandy	76.7	77.8	77.3	73.7	75.5	74.6	66.8	71.4	69.0	85.1	88.4	86.8	92.2	90.6	91.4
Matale	74.1	72.6	73.3	76.1	75.1	75.6	74.3	65.1	69.6	84.2	77.3	80.6	94.4	84.8	89.4
Nuwara Eliya	72.6	80.3	76.4	70.2	78.3	74.1	65.7	72.2	68.8	70.3	73.2	71.7	81.0	82.3	81.7
Southern	73.9	81.5	77.6	72.8	80.0	76.3	71.5	78.9	75.1	85.5	92.1	88.7	93.1	96.7	94.8
Galle	76.5	82.7	79.5	74.8	79.1	76.9	74.1	80.2	77.1	90.0	94.0	92.0	91.7	95.9	93.8
Matara	71.3	78.9	75.0	69.9	77.5	73.5	68.0	75.1	71.4	81.2	89.6	85.3	92.8	97.3	95.0
Hambantota	73.2	83.3	78.2	73.8	85.1	79.2	72.2	81.8	76.8	83.3	91.8	87.5	95.8	97.3	96.5
Northern	87.8	97.1	92.2	96.2	112.5	104.0	86.3	102.4	94.0	147.9	160.0	153.8	156.4	157.4	156.9
Jaffna	67.6	71.4	69.4	73.5	82.5	77.9	63.2	69.6	66.3	148.2	157.6	152.8	151.7	144.2	147.9
Killinochchi	131.9	141.1	136.4	157.5	162.9	160.2	134.7	151.6	143.0	158.4	175.2	166.7	134.3	153.8	143.4
Mannar	62.1	88.8	74.2	75.3	100.8	86.9	74.7	98.8	85.6	77.4	88.5	82.9	146.2	167.4	156.1
Vavuniya	149.7	172.7	159.9	154.5	207.5	178.0	162.4	228.7	191.9	183.9	188.8	186.3	212.9	210.0	211.4
Mullaitivu	157.5	202.4	177.5	164.1	226.1	191.8	138.6	198.0	165.2	178.4	208.6	193.2	149.7	152.0	150.9
Eastern	63.5	78.7	70.5	64.4	79.6	71.4	67.4	82.9	74.5	77.9	88.6	83.0	88.3	94.2	91.2
Batticaloa	56.1	66.4	60.9	58.6	67.1	62.6	59.1	71.0	64.7	68.5	77.1	72.6	77.8	80.4	79.1
Ampara	76.0	94.0	84.2	74.6	92.8	82.9	77.0	95.7	85.5	85.7	93.4	89.3	94.8	102.5	98.5
Trincomalee	55.0	73.1	63.0	57.4	77.7	66.4	64.5	80.5	71.6	78.6	98.1	87.6	93.1	102.1	97.5
North western	73.2	79.1	76.1	75.5	84.7	79.9	71.0	77.5	74.1	84.2	86.6	85.4	93.7	94.2	93.9
Kurunegala	77.4	82.4	79.8	79.4	90.2	84.6	74.3	80.4	77.2	89.2	89.7	89.5	95.7	95.2	95.4
Puttalama	64.4	72.5	68.4	67.7	73.6	70.6	64.5	71.7	68.0	75.2	81.1	78.1	90.0	92.5	91.3
North central	70.7	80.1	75.3	72.1	86.4	78.7	65.6	80.2	72.3	86.8	91.9	89.3	97.2	97.8	97.5
Anuradhapura	69.2	80.2	74.6	72.6	85.8	78.8	64.1	75.9	69.7	87.9	94.3	91.1	95.8	96.1	96.0
Polonnaruwa	74.1	79.9	77.0	71.3	87.9	78.7	68.7	90.5	78.4	84.6	86.9	85.7	100.0	101.2	100.6
Uva	66.5	75.3	70.8	64.2	77.9	70.7	65.7	80.0	72.4	75.8	82.9	79.3	87.3	88.3	87.8
Badulla	64.4	73.5	68.9	60.0	69.6	64.6	61.8	72.8	67.1	73.7	79.8	76.7	85.9	86.6	86.2
Monaragala	70.4	78.7	74.5	71.5	94.6	82.0	72.5	94.4	82.4	79.7	88.5	84.0	89.9	91.4	90.6
Sabaragamuwa	80.2	85.0	82.6	78.5	87.4	82.8	75.1	83.2	79.1	84.1	85.8	85.0	87.8	87.8	87.8
Ratnapura	76.7	80.5	78.6	76.1	86.1	81.0	75.4	83.4	79.3	81.1	82.3	81.7	86.9	86.2	86.5
Kegalle	85.0	91.7	88.3	81.9	89.4	85.6	74.7	82.9	78.7	88.4	91.0	89.7	89.1	90.2	89.6

Table 4: Primary Completion Rates by province and district, 1998-2007 (Continue)

District	2003			2004			2005			2006			2007		
	Male	Female	Total	Male	Female	Total	Male	Female	Total	Male	Female	Total	Male	Female	Total
Sri Lanka	91.3	92.2	91.8	89.5	78.1	83.9	87.1	88.2	87.7	86.0	86.2	86.1	83.6	83.6	83.6
Western	86.2	86.4	86.3	84.0	84.0	84.0	83.2	85.4	84.3	84.6	85.6	85.1	82.8	83.4	83.1
Colombo	84.4	83.0	83.7	80.8	80.0	80.4	80.2	81.8	80.9	80.7	81.4	81.0	79.6	80.5	80.0
Gampaha	85.0	87.7	86.3	82.8	85.7	84.2	84.0	88.1	86.0	85.1	88.4	86.7	82.4	84.5	83.4
Kalutara	91.8	90.1	91.0	92.6	88.4	90.5	87.8	87.6	87.7	91.4	88.8	90.1	90.0	87.1	88.5
Central	85.3	84.9	85.1	84.0	83.2	83.6	80.5	78.5	79.5	77.2	76.8	77.0	74.3	74.7	74.5
Kandy	88.0	87.8	87.9	85.4	85.8	85.6	84.2	82.3	83.3	79.1	80.5	79.8	77.2	79.0	78.1
Matale	91.0	84.3	87.5	89.2	80.3	84.5	83.9	74.4	79.0	82.4	74.5	78.3	77.3	71.0	74.0
Nuwara Eliya	77.6	80.6	79.1	78.6	80.7	79.6	72.3	74.9	73.5	71.0	72.1	71.5	67.7	69.8	68.8
Southern	88.9	90.7	89.8	89.2	91.2	90.2	83.4	86.0	84.7	83.7	85.5	84.6	79.7	79.1	79.4
Galle	87.4	88.6	88.0	90.4	91.3	90.8	85.1	88.3	86.7	86.2	86.8	86.5	85.2	84.1	84.7
Matara	88.1	88.9	88.5	84.3	88.9	86.5	79.8	81.9	80.8	79.9	81.7	80.8	75.6	74.4	75.0
Hambantota	92.7	96.4	94.5	94.1	94.0	94.0	85.1	87.6	86.3	84.5	88.0	86.2	75.8	76.7	76.2
Northern	155.1	155.2	155.2	157.3	154.1	155.7	170.7	167.1	168.9	147.4	151.0	149.2	143.0	146.4	144.7
Jaffna	149.6	143.3	146.4	154.2	143.9	149.0	167.5	159.3	163.3	132.6	128.8	130.7	133.2	125.8	129.4
Killinochchi	139.3	143.5	141.4	143.0	148.9	145.9	151.9	159.0	155.3	153.6	174.3	163.6	146.6	162.2	154.1
Mannar	153.9	188.1	169.9	154.6	177.3	165.2	170.7	203.1	185.7	161.4	204.2	181.2	142.9	189.5	164.4
Vavuniya	216.8	227.1	221.9	212.7	222.3	217.5	222.4	211.3	216.9	194.4	199.3	196.9	169.6	183.3	176.4
Mullaitivu	132.2	126.5	129.3	131.1	120.5	125.8	150.9	141.3	146.1	143.2	140.6	141.9	148.6	148.1	148.4
Eastern	90.3	97.7	93.9	89.9	94.7	92.2	89.6	93.9	91.6	86.4	90.8	88.5	95.1	94.5	94.8
Batticaloa	75.9	82.1	78.9	80.9	84.0	82.4	82.8	84.7	83.7	81.6	84.9	83.2	93.9	90.3	92.1
Ampara	100.1	106.9	103.4	96.8	103.2	99.8	94.6	101.4	97.9	90.0	94.1	92.0	93.5	95.9	94.7
Trincomalee	96.0	106.4	101.0	92.2	97.7	94.9	91.6	95.7	93.6	87.7	94.4	90.9	99.3	98.7	99.0
North western	94.8	94.7	94.7	90.6	90.9	90.8	88.7	89.1	88.9	88.9	86.9	87.9	86.0	86.0	86.0
Kurunegala	98.6	97.1	97.8	92.3	92.5	92.4	89.8	90.7	90.2	90.8	87.6	89.2	86.9	87.1	87.0
Puttalama	88.0	90.5	89.3	87.6	88.1	87.8	86.7	86.4	86.6	85.7	85.8	85.7	84.3	84.1	84.2
North central	101.9	102.9	102.4	92.1	92.3	92.2	86.1	85.4	85.7	85.9	83.3	84.6	82.3	80.2	81.3
Anuradhapura	102.7	102.7	102.7	93.2	91.8	92.5	88.0	85.1	86.6	88.3	85.7	87.0	84.5	80.7	82.6
Polonnaruwa	100.3	103.3	101.8	90.0	93.5	91.7	82.0	85.9	83.9	80.9	78.3	79.6	77.7	79.2	78.5
Uva	86.3	87.7	87.0	86.3	86.0	86.1	80.3	81.9	81.1	80.0	81.1	80.5	74.2	76.8	75.5
Badulla	81.5	83.4	82.4	81.7	80.5	81.1	77.6	80.1	78.9	79.6	79.5	79.6	74.0	75.6	74.8
Monaragala	95.0	95.6	95.3	94.7	96.2	95.4	85.2	85.3	85.2	80.6	84.1	82.3	74.6	79.1	76.8
Sabaragamuwa	86.4	84.5	85.4	86.3	85.8	86.0	82.8	83.7	83.3	80.2	78.4	79.3	78.3	75.2	76.8
Ratnapura	85.5	81.9	83.7	85.4	81.7	83.6	81.6	79.5	80.5	76.5	72.3	74.3	73.8	70.0	71.9
Kegalle	87.6	88.4	88.0	87.6	91.9	89.7	84.6	90.1	87.3	85.7	87.9	86.8	85.1	83.1	84.1

Table 5: Gender Parity Index for primary education level by province and district, 1991-2007

Province/District	1991	1992	1993	1994	1996	1997	1998	1999	2000	2001	2002	2003	2004	2005	2006	2007
Sri Lanka	93.0	93.0	93.1	93.0	93.5	93.8	94.2	94.7	94.9	95.3	95.7	96.4	96.4	96.4	96.3	96.2
Western	93.9	93.5	93.9	94.0	94.5	94.7	95.0	95.3	95.3	95.9	96.2	96.6	96.7	96.9	96.7	96.5
Colombo	95.4	94.0	94.4	94.2	94.7	94.8	94.1	94.3	93.9	94.7	94.7	95.2	94.9	94.8	94.9	94.5
Gampaha	93.9	94.1	94.5	94.6	94.5	94.9	95.7	96.3	96.7	97.6	98.2	98.7	98.9	99.2	98.7	98.9
Kalutara	91.6	91.7	92.1	93.0	94.0	94.3	95.2	95.2	95.3	95.3	95.3	95.6	96.0	96.6	96.4	95.7
Central	91.8	91.9	92.7	92.8	93.7	93.7	93.8	94.5	95.3	95.8	96.6	97.8	97.5	97.0	97.5	97.7
Kandy	92.8	93.0	93.4	92.7	94.2	94.2	94.3	95.0	96.1	96.5	97.1	98.3	98.5	97.6	98.8	99.1
Matale	91.8	91.2	91.7	92.1	92.1	93.5	93.4	94.4	95.0	95.7	96.4	97.2	95.8	96.0	96.6	97.8
Nuwara Eliya	90.3	90.8	92.4	93.2	93.8	93.1	93.3	93.9	94.2	94.9	96.0	97.3	96.8	96.6	95.8	95.3
Southern	91.8	91.9	92.7	91.9	92.3	92.6	93.1	93.1	92.9	93.9	94.6	95.1	95.3	95.2	94.8	94.7
Galle	92.3	92.9	93.4	92.8	93.4	93.6	94.1	93.9	92.9	94.2	95.1	95.2	95.6	95.8	94.7	95.1
Matara	91.0	102.9	92.6	90.7	90.9	91.0	91.8	91.5	91.9	92.6	92.3	93.0	93.6	92.9	92.9	92.8
Hambantota	91.8	91.2	91.7	91.8	92.4	92.8	93.2	94.0	93.9	95.3	96.8	97.7	97.1	97.0	97.3	96.6
Northern	95.4	95.3	93.8	93.1	93.7	93.5	93.8	94.5	95.1	94.7	95.1	96.1	96.1	96.7	96.6	96.6
Jaffna	96.4	96.6	94.4	92.8	92.6	92.7	91.9	93.3	93.3	94.9	94.9	95.1	96.4	96.6	96.2	96.1
Killinochchi	92.9	93.7	93.5	93.6	93.9	92.9	94.9	96.3	96.8	95.0	95.2	98.1	96.7	96.1	96.9	95.3
Mannar	97.6	93.4	95.9	94.8	93.9	94.3	93.5	92.3	95.9	94.6	96.8	98.3	95.6	100.2	99.1	98.3
Vavuniya	90.4	92.5	92.3	92.9	93.8	93.3	95.4	94.5	96.8	93.7	94.2	97.3	95.6	95.4	95.9	97.4
Mullaitivu	95.1	92.4	90.7	93.2	96.0	95.7	96.1	97.4	95.9	94.9	95.3	94.3	95.1	97.2	96.9	97.6
Eastern	93.6	93.8	94.1	93.9	94.5	93.9	94.6	95.0	95.2	95.3	95.3	95.2	95.3	95.3	94.6	94.7
Batticaloa	95.4	95.6	95.6	94.7	94.7	94.3	95.6	96.3	97.0	96.6	96.5	96.5	95.0	95.9	94.6	94.9
Ampara	92.5	92.9	93.4	93.3	93.9	93.5	93.9	94.1	93.7	93.9	93.9	94.4	95.4	95.3	95.0	94.1
Trincomalee	93.3	92.9	93.4	93.9	95.0	94.0	94.7	94.9	95.6	95.9	96.1	94.8	95.5	94.4	94.1	95.4
North western	92.0	92.1	91.7	91.4	91.9	92.3	93.2	93.8	94.2	95.3	95.5	96.6	96.7	96.4	96.4	96.0
Kurunegala	91.9	91.8	91.7	91.2	92.0	92.3	92.9	93.4	93.8	94.8	95.1	96.2	96.9	96.8	96.8	97.1
Puttalama	92.3	81.7	91.6	100.1	91.7	92.3	93.6	94.4	94.9	96.1	96.2	97.1	96.3	95.6	95.6	94.1
North central	93.7	93.6	93.1	92.9	92.7	93.6	94.2	94.8	95.4	95.7	95.8	96.3	95.9	96.0	96.1	96.9
Anuradhapura	93.6	93.2	92.2	92.4	92.4	93.6	94.6	95.0	95.3	95.4	95.7	96.2	95.6	95.7	95.8	96.5
Polonnaruwa	93.8	94.5	95.1	93.9	93.4	93.7	93.5	94.4	95.8	96.4	96.1	96.5	96.6	96.6	96.8	97.6
Uva	92.7	93.7	93.8	94.2	94.8	94.9	95.4	96.3	96.3	96.1	96.4	97.8	98.0	98.0	97.8	97.7
Badulla	92.2	93.8	93.6	94.3	95.0	95.2	95.4	96.2	96.4	96.3	96.5	98.1	98.3	98.6	97.8	97.6
Monaragala	93.6	93.7	94.2	94.2	94.3	94.4	95.4	96.4	96.0	95.7	96.1	97.3	97.6	96.6	97.7	98.0
Sabaragamuwa	92.9	92.5	92.6	93.0	93.7	94.7	95.1	95.0	95.0	95.1	95.7	95.7	96.3	96.5	95.9	95.9
Ratnapura	93.1	92.9	92.9	93.1	93.2	94.3	94.9	95.2	94.6	94.6	94.9	95.0	95.3	96.0	95.8	96.1
Kegalle	92.5	91.9	92.1	92.9	94.5	95.4	95.4	94.8	95.6	95.8	96.8	96.5	97.7	97.1	96.1	95.7

Table 6: Gender Parity index for junior secondary education level by province and district, 1991-2007

Province/District	1991	1992	1993	1994	1996	1997	1998	1999	2000	2001	2002	2003	2004	2005	2006	2007
Sri Lanka	103.1	102.7	102.3	102.1	102.1	101.9	101.9	101.0	99.9	99.6	99.0	98.9	99.4	99.7	100.2	100.3
Western	100.5	99.6	98.3	97.8	97.9	97.6	97.5	96.3	95.3	95.2	95.6	96.3	96.6	97.6	97.9	98.8
Colombo	98.5	97.5	95.2	94.8	94.6	93.9	93.6	92.8	91.4	91.4	92.5	93.0	92.9	93.6	93.2	93.2
Gampaha	101.3	101.0	100.3	99.2	99.7	99.7	100.2	98.6	98.1	98.0	97.8	98.5	99.7	101.5	102.6	105.1
Kalutara	102.6	101.2	100.7	100.7	100.2	100.4	99.8	99.0	97.7	97.5	97.9	98.5	98.6	98.7	99.2	99.0
Central	101.6	101.4	101.5	102.5	102.4	102.7	103.3	102.2	100.7	100.0	99.3	98.9	100.2	100.8	101.5	101.2
Kandy	103.3	102.6	102.2	102.8	101.8	102.1	103.4	101.8	99.7	98.8	98.9	98.9	100.1	101.0	101.7	101.5
Matale	104.5	103.7	104.1	103.8	103.7	102.2	102.7	101.5	100.7	99.5	98.3	97.5	99.0	99.0	99.1	99.2
Nuwara Eliya	95.7	96.9	98.1	100.8	102.7	104.2	103.6	103.3	102.4	102.4	100.5	100.0	101.1	101.4	102.7	102.0
Southern	105.7	104.5	104.9	103.7	103.2	103.2	103.6	102.7	100.5	100.6	99.3	98.8	98.5	99.0	99.2	99.2
Galle	105.2	102.9	102.6	102.0	101.6	101.1	102.3	102.2	99.1	101.0	98.9	98.8	97.9	98.9	98.8	98.7
Matara	103.3	102.3	104.6	101.9	101.6	102.5	102.1	101.3	99.4	98.0	97.5	96.7	96.6	96.7	97.2	96.6
Hambantota	110.1	110.1	109.2	108.9	107.6	107.6	107.5	105.2	104.1	103.3	102.3	101.5	102.0	102.3	102.5	103.5
Northern	106.6	108.8	108.4	107.9	108.8	109.0	108.0	106.6	105.3	104.0	102.1	101.7	101.4	101.4	102.1	102.1
Jaffna	105.6	108.0	107.5	107.5	108.2	107.5	105.7	104.4	102.7	101.2	99.5	100.1	99.9	99.9	101.4	101.3
Killinochchi	111.2	108.8	111.3	108.8	112.5	115.4	112.5	106.9	108.3	107.9	103.9	102.5	102.2	103.0	102.5	103.6
Mannar	103.9	114.9	110.6	107.7	110.6	112.6	107.3	112.9	106.6	108.1	103.5	102.4	101.7	103.2	101.4	105.8
Vavuniya	109.8	114.8	106.9	108.3	104.3	101.9	107.0	106.6	107.0	104.4	102.9	101.8	102.6	102.9	102.3	100.7
Mullaitivu	111.8	107.2	110.8	108.9	108.6	112.4	112.5	110.2	109.8	108.2	109.8	109.6	106.2	103.2	105.4	102.8
Eastern	97.6	98.3	97.7	97.5	98.1	98.0	98.1	98.1	98.5	98.8	99.1	99.7	99.7	99.1	100.0	99.9
Batticaloa	108.6	108.8	108.0	108.2	108.3	107.2	109.2	108.6	108.4	107.8	107.1	107.3	107.4	106.7	106.8	107.1
Ampara	94.2	95.2	95.3	95.2	97.1	97.1	96.1	96.4	96.5	97.1	97.8	98.3	97.7	97.1	97.7	97.1
Trincomalee	92.3	92.2	91.0	89.9	89.0	89.8	89.9	90.2	91.7	92.2	92.9	94.1	94.5	94.2	96.1	95.9
North western	103.0	102.3	102.1	102.5	101.3	100.8	99.6	99.1	98.0	97.6	97.6	97.4	98.1	98.6	99.0	99.4
Kurunegala	103.9	103.4	103.0	103.2	101.9	101.4	100.3	99.8	98.4	97.8	97.5	97.5	97.6	97.9	98.3	98.4
Puttalama	100.8	99.6	99.9	100.7	99.9	99.2	97.9	97.5	97.1	97.1	97.9	97.4	99.3	99.8	100.2	101.6
North central	104.0	103.8	104.0	104.4	103.7	102.8	102.4	101.7	101.1	100.3	99.3	98.9	99.9	100.4	101.1	101.1
Anuradhapura	104.0	104.4	105.2	105.4	104.3	103.4	102.3	101.4	101.0	100.0	99.6	98.9	99.9	100.3	101.0	101.3
Polonnaruwa	103.9	102.4	101.2	102.2	102.3	101.4	102.5	102.3	101.2	100.8	98.6	98.7	99.9	100.7	101.3	100.8
Uva	103.9	103.6	103.9	104.1	105.9	106.7	107.2	105.8	105.4	105.2	103.8	103.5	103.8	103.8	104.0	103.7
Badulla	101.8	101.7	102.5	102.5	104.7	105.9	107.2	105.7	105.0	104.9	103.6	103.3	103.8	103.7	104.2	103.7
Monaragala	107.8	107.3	106.4	106.9	107.9	108.0	107.1	105.9	106.0	105.7	104.0	104.0	104.0	103.9	103.7	103.6
Sabaragamuwa	107.6	107.1	106.1	106.1	105.9	105.3	106.0	105.0	103.5	102.7	101.8	101.1	101.5	101.5	101.5	101.1
Ratnapura	109.5	109.0	108.5	108.2	108.7	108.6	109.1	107.5	105.9	104.4	103.1	102.5	102.5	102.6	102.3	101.8
Kegalle	105.4	89.7	103.1	103.4	102.2	101.0	101.9	101.7	100.1	100.2	100.0	99.1	100.2	100.1	100.4	100.0

Table 7: Gender Parity index for secondary education level by province and district, 1991-2007

Province/District	1991	1992	1993	1994	1996	1997	1998	1999	2000	2001	2002	2003	2004	2005	2006	2007
Sri Lanka	105.9	105.3	104.9	104.5	104.5	104.7	105.2	104.3	104.6	104.2	102.7	102.5	102.7	104.0	103.6	105.0
Western	102.9	102.1	101.3	100.8	101.1	100.8	101.5	100.0	100.5	100.0	99.3	99.4	99.4	101.3	100.7	102.6
Colombo	99.2	98.4	96.8	96.6	97.2	96.0	96.1	95.2	94.8	93.7	94.8	94.6	94.0	95.3	94.8	95.2
Gampaha	104.1	103.9	103.2	102.0	102.8	103.2	104.3	102.3	103.5	103.4	101.6	102.1	103.3	106.0	106.2	109.7
Kalutara	107.9	106.0	106.4	106.1	105.2	105.6	106.8	105.6	106.7	106.7	104.1	104.2	103.7	105.3	103.2	105.8
Central	104.6	104.2	104.5	105.1	104.9	105.2	106.4	105.3	105.2	105.2	102.9	102.7	104.5	105.5	105.3	106.5
Kandy	106.8	106.4	106.1	106.7	105.5	105.6	107.8	106.0	105.4	105.4	103.4	103.1	105.8	107.0	106.0	107.9
Matale	108.2	106.0	106.9	105.0	105.2	104.4	105.4	104.9	105.6	104.8	101.8	102.9	102.5	104.1	103.4	104.8
Nuwara Eliya	96.7	97.9	99.1	101.5	103.4	105.0	104.4	104.3	104.6	104.9	102.6	101.8	103.2	103.6	105.4	104.8
Southern	109.8	108.0	108.5	106.9	106.3	106.8	108.3	107.2	106.8	107.2	104.2	104.3	103.3	104.5	103.5	105.0
Galle	109.4	106.7	106.7	105.6	105.0	105.0	107.3	106.2	104.9	107.2	103.9	104.7	102.3	103.8	102.5	103.7
Matara	106.9	105.9	108.3	105.2	104.9	106.5	107.3	106.5	106.2	105.5	102.8	102.2	101.7	102.2	100.9	102.5
Hambantota	114.4	113.1	112.0	111.4	110.0	110.0	111.3	109.7	110.7	109.3	106.5	106.2	106.8	108.5	108.5	110.7
Northern	110.5	113.1	111.7	110.0	109.7	111.8	110.7	109.6	109.0	108.1	105.5	105.1	104.3	104.6	105.5	106.1
Jaffna	109.7	112.4	111.3	109.9	108.5	110.9	109.1	108.5	107.0	106.3	104.0	103.9	103.2	103.8	105.3	106.3
Killinochchi	111.5	113.8	113.9	111.0	113.5	116.7	114.4	108.3	111.2	111.0	106.3	104.6	105.4	105.8	103.8	106.7
Mannar	106.6	119.6	114.4	107.9	109.9	112.3	109.7	112.7	108.8	110.9	105.5	106.1	103.1	105.3	104.2	107.3
Vavuniya	111.9	118.7	110.5	111.1	107.2	107.8	109.0	109.1	110.8	107.5	106.3	105.5	105.8	105.5	106.6	104.5
Mullaitivu	117.1	109.5	111.7	109.7	110.3	113.8	114.7	113.3	113.2	111.4	110.5	111.6	108.2	105.1	107.8	105.7
Eastern	97.7	98.5	97.9	96.9	97.3	97.6	97.8	97.5	99.0	99.0	99.8	100.5	101.1	101.0	101.9	102.1
Batticaloa	108.8	109.1	107.5	106.4	106.4	106.6	107.3	106.2	107.9	107.4	107.7	108.1	108.9	108.3	108.4	109.2
Ampara	93.8	95.2	95.5	94.8	96.5	96.4	96.4	96.3	97.6	97.8	98.3	98.9	99.3	99.3	100.0	99.5
Trincomalee	92.5	92.5	91.6	90.2	88.6	89.8	90.0	90.3	92.1	92.3	94.1	95.0	95.7	95.8	97.9	97.7
North western	105.9	104.9	104.6	104.7	104.1	104.1	102.9	102.6	103.4	102.7	101.4	100.8	101.5	102.9	102.8	105.0
Kurunegala	107.0	106.2	105.7	105.4	105.1	105.3	104.2	104.1	104.7	103.6	102.1	101.5	101.7	102.8	102.6	104.5
Puttalama	103.0	101.5	101.9	102.7	101.7	101.1	99.6	99.0	100.3	100.5	99.8	99.5	101.0	103.1	103.1	106.0
North central	105.9	105.2	105.5	105.8	105.2	104.7	104.8	104.3	104.6	103.6	102.6	102.0	102.6	104.3	104.3	104.8
Anuradhapura	105.5	105.3	106.2	106.4	105.4	105.0	104.6	104.1	104.3	103.1	102.4	101.9	102.7	104.2	104.0	104.5
Polonnaruwa	106.9	105.1	104.0	104.5	104.8	104.0	105.4	104.9	105.1	104.6	103.1	102.3	102.5	104.5	104.8	105.4
Uva	106.7	106.1	105.8	105.7	107.6	108.8	109.5	108.0	108.5	108.8	107.8	107.2	107.2	108.4	107.8	109.0
Badulla	104.7	104.2	104.4	104.3	106.9	108.3	109.6	108.0	108.0	108.5	108.0	107.3	107.3	108.7	108.0	108.9
Monaragala	110.9	109.8	108.5	108.2	108.8	109.6	109.5	108.1	109.4	109.3	107.6	107.1	107.0	107.9	107.5	109.1
Sabaragamuwa	111.4	110.6	109.1	109.4	109.7	109.0	110.7	110.1	110.2	109.3	106.8	105.5	105.4	107.4	106.2	108.0
Ratnapura	113.1	112.2	111.0	111.5	111.8	111.9	113.4	112.2	112.8	111.1	108.0	107.4	106.1	108.6	107.3	109.0
Kegalle	109.4	94.8	106.6	106.9	107.0	105.3	107.3	107.5	106.8	106.8	105.2	102.9	104.6	105.8	104.7	106.6

Table 8: Gender Parity Index by streams and All A/L by province and district,1991-2007

Province/District	1991				1992				1993			
	Science	Arts	Commerce	All A/L	Science	Arts	Commerce	All A/L	Science	Arts	Commerce	All A/L
Sri Lanka	85.4	232.7	107.2	139.5	87.0	220.7	105.1	137.8	83.5	219.7	103.6	137.4
Western	83.1	277.5	125.2	130.1	84.9	260.3	121.5	129.5	83.7	273.9	125.1	134.9
Colombo	70.1	251.5	109.3	104.6	71.1	263.2	107.7	105.8	69.5	285.9	114.6	110.0
Gampaha	91.2	267.6	141.1	144.3	100.2	240.8	134.5	146.4	103.0	231.7	132.3	148.8
Kalutara	116.8	314.8	150.6	181.1	122.9	279.9	149.1	179.2	120.9	314.0	149.5	190.0
Central	90.4	228.4	90.0	137.7	100.3	216.0	85.5	137.7	102.6	219.1	85.6	141.6
Kandy	96.7	230.8	87.8	136.4	109.2	220.6	88.7	141.1	110.0	228.3	85.6	143.8
Matale	84.6	258.0	88.5	163.5	91.2	216.3	60.3	141.4	98.8	218.4	73.6	153.8
Nuwara Eliya	54.1	178.5	101.5	117.4	53.3	194.1	91.8	118.1	59.2	181.7	93.5	120.0
Southern	93.7	255.8	107.9	153.6	92.5	240.6	105.5	148.9	94.8	246.1	105.5	153.0
Galle	107.0	268.2	103.6	152.6	100.2	243.0	105.9	147.9	100.0	246.8	109.9	153.0
Matara	66.1	288.9	106.2	148.5	75.6	281.8	104.1	149.5	85.2	273.7	100.7	153.4
Hambantota	108.6	212.9	128.4	162.2	104.2	199.2	107.1	149.9	99.4	213.4	102.5	152.3
Northern	85.1	342.4	131.1	156.8	92.8	353.4	142.7	163.0	81.9	289.1	121.3	144.1
Jaffna	84.5	394.5	132.3	153.8	92.0	384.1	142.4	157.9	81.0	331.7	122.6	141.8
Kilinochchi	28.1	346.7	111.3	114.7	116.7	374.8	150.8	209.0	109.1	312.1	92.8	168.3
Mannar	87.3	174.4	142.4	146.9	100.0	269.9	152.2	187.2	71.9	270.0	154.3	172.9
Vavuniya	71.8	225.2	82.3	145.5	86.3	305.4	166.7	186.5	88.6	197.7	152.4	159.3
Mullaitivu	143.2	316.2	196.4	235.0	80.5	234.8	98.5	150.0	76.8	163.8	86.6	123.0
Eastern	58.8	141.6	74.4	98.6	68.1	139.2	76.3	100.2	64.4	142.0	73.7	99.1
Batticaloa	64.2	162.6	76.9	110.8	77.2	174.4	75.8	112.8	66.7	155.2	77.2	101.8
Ampara	57.8	129.7	67.8	90.1	66.6	130.3	71.8	95.3	65.3	138.9	68.0	97.2
Trincomalee	52.3	122.5	89.6	96.2	56.2	122.2	89.2	96.2	56.6	135.0	81.2	100.4
North Western	85.4	201.0	90.3	141.3	74.5	188.6	87.8	136.0	67.2	190.0	81.3	134.3
Kurunegala	83.9	201.8	83.1	142.7	70.5	191.0	78.8	137.5	62.1	188.0	76.3	134.7
Puttalam	90.4	197.4	107.5	136.6	87.7	178.1	107.2	131.2	83.5	200.0	92.9	132.8
North Central	74.8	224.8	87.6	142.0	62.9	189.9	94.5	133.7	61.2	188.2	103.5	137.4
Anuradhapura	73.3	212.4	79.7	134.5	56.3	179.8	85.8	124.3	56.7	177.2	96.0	127.6
Polonnaruwa	78.9	252.9	101.4	158.4	81.3	212.7	111.5	155.3	72.3	210.0	118.1	157.7
Uva	92.5	224.0	97.5	147.1	87.7	217.9	88.2	142.6	80.3	198.7	88.6	135.1
Badulla	89.6	210.6	94.9	137.4	87.6	202.0	84.3	134.3	79.7	184.8	85.5	127.8
Monaragala	112.6	269.1	110.3	190.9	88.0	282.4	102.9	176.8	82.8	246.9	97.9	160.5
Sabaragamuwa	93.9	257.8	102.9	160.3	99.5	247.3	94.7	157.9	82.4	233.8	87.3	147.1
Ratnapura	89.4	270.2	126.7	168.4	101.2	250.0	115.1	164.6	71.5	237.1	101.2	148.9
Kegalle	98.2	247.6	82.7	153.3	98.0	245.1	77.2	152.4	92.4	230.8	74.6	145.4

Table 8: Gender Parity Index by streams and All A/L by province and district,1991-2007 (Continue)

Province/District	1994				1996				1997			
	Science	Arts	Commerce	All A/L	Science	Arts	Commerce	All A/L	Science	Arts	Commerce	All A/L
Sri Lanka	79.9	207.3	98.1	131.8	77.6	203.1	92.5	131.3	79.6	203.2	91.4	133.4
Western	79.9	269.6	120.8	132.6	78.8	264.9	117.9	133.7	80.5	257.8	108.1	130.7
Colombo	70.8	284.6	110.9	111.0	77.1	253.3	112.8	116.3	73.2	260.2	99.3	110.3
Gampaha	89.2	224.6	130.7	144.4	76.6	250.7	119.5	142.1	90.7	248.6	117.1	147.5
Kalutara	105.5	313.5	139.5	180.2	88.4	298.0	131.5	169.5	94.8	266.1	124.9	164.7
Central	92.4	201.4	83.1	134.3	91.8	198.4	73.6	131.4	85.3	195.7	72.2	131.5
Kandy	100.8	212.5	88.5	141.5	100.3	210.4	78.0	137.1	92.1	200.6	77.0	134.2
Matale	74.5	180.9	55.3	121.5	75.9	184.6	47.8	122.8	75.0	195.6	51.9	132.1
Nuwara Eliya	58.4	176.6	83.2	115.2	56.7	168.5	77.4	116.0	54.3	177.1	68.7	119.3
Southern	90.4	236.5	98.4	146.4	85.2	221.9	91.1	141.4	90.8	217.2	93.2	145.4
Galle	89.5	257.0	101.3	146.2	86.0	229.8	92.7	141.3	88.6	226.0	96.5	143.1
Matara	86.0	253.1	89.0	145.6	83.9	229.5	85.1	142.2	101.4	221.4	88.1	153.4
Hambantota	102.3	190.6	109.1	147.9	85.1	199.9	96.4	140.6	83.1	197.8	93.5	139.6
Northern	76.4	220.2	100.3	127.8	64.6	193.7	87.3	118.6	79.1	218.0	101.5	139.0
Jaffna	75.1	237.7	100.3	126.4	60.7	201.1	81.2	111.0	76.5	234.7	94.3	136.8
Kilinochchi	100.9	208.1	101.6	146.1	73.4	208.4	98.2	133.0	70.6	209.6	108.8	133.5
Mannar	50.5	205.3	86.4	110.5	61.4	152.4	78.3	103.4	65.3	162.4	68.6	109.6
Vavuniya	90.2	215.0	103.3	146.8	93.1	200.4	100.5	141.9	149.0	240.8	173.3	199.5
Mullaitivu	87.9	135.4	107.3	119.4	55.2	184.6	112.0	136.8	60.5	190.8	106.0	129.8
Eastern	58.9	125.8	67.0	90.3	55.7	121.9	59.4	89.5	58.7	126.7	60.8	93.7
Batticaloa	61.8	118.6	70.3	86.5	65.5	119.7	62.1	91.4	71.0	130.1	68.7	101.0
Ampara	59.7	128.7	59.7	90.8	52.5	127.6	54.5	90.8	52.6	130.2	49.3	90.8
Trincomalee	51.5	127.4	78.8	94.1	47.8	112.9	65.1	84.4	56.9	115.0	73.0	90.2
North Western	61.0	187.4	81.0	129.6	71.8	195.2	75.0	136.9	77.7	193.7	79.1	140.7
Kurunegala	54.7	183.1	75.3	128.8	72.8	193.1	71.6	139.6	79.4	196.8	73.5	144.4
Puttalam	81.7	210.4	93.1	132.7	69.1	204.7	82.3	128.3	72.0	180.4	92.3	128.1
North Central	71.6	181.1	89.0	133.1	71.1	180.3	87.0	129.6	71.2	183.5	83.6	132.2
Anuradhapura	67.4	173.7	85.2	127.1	70.0	169.4	81.2	122.6	70.4	177.4	77.1	127.5
Polonnaruwa	82.7	197.6	96.8	146.9	74.7	209.6	99.3	147.9	73.4	201.0	99.2	144.8
Uva	73.0	187.7	85.5	127.6	68.0	201.2	79.4	129.5	64.5	203.6	84.8	134.5
Badulla	74.6	178.9	88.2	125.4	75.8	194.1	83.8	131.3	67.8	197.1	87.5	134.0
Monaragala	66.8	216.4	78.4	134.4	49.1	221.5	69.7	125.0	56.3	222.3	77.3	136.1
Sabaragamuwa	96.6	230.1	90.6	152.0	86.7	234.4	93.6	156.0	83.0	224.3	89.2	151.4
Ratnapura	109.1	238.4	104.9	162.4	82.5	237.7	104.1	158.3	83.4	236.4	100.7	157.6
Kegalle	87.8	223.0	75.6	143.0	89.7	231.8	82.8	154.0	82.7	214.2	76.8	145.7

Table 8: Gender Parity Index by streams and All A/L by province and district,1991-2007 (Continue)

Province/District	1998				1999				2000			
	Science	Arts	Commerce	All A/L	Science	Arts	Commerce	All A/L	Science	Arts	Commerce	All A/L
Sri Lanka	80.5	201.8	94.4	135.4	80.1	197.3	94.0	131.5	87.7	194.0	95.9	131.8
Western	82.6	251.6	113.1	134.1	78.6	235.7	112.2	128.1	85.4	230.3	111.5	127.9
Colombo	72.6	244.6	105.9	111.2	69.6	234.6	106.3	109.2	76.1	224.8	102.9	108.8
Gampaha	94.1	238.1	115.9	147.1	85.9	216.2	113.3	136.8	92.6	213.9	119.9	138.0
Kalutara	110.1	277.0	133.1	179.8	109.9	263.9	130.6	171.2	112.0	258.5	123.0	164.3
Central	87.0	198.2	77.2	135.8	91.6	194.8	78.9	132.9	87.4	195.5	83.7	132.0
Kandy	94.5	209.2	81.3	140.8	98.6	200.9	81.3	135.1	92.8	201.1	84.1	132.5
Matale	76.5	190.9	61.6	134.8	80.5	197.3	71.1	138.4	70.7	206.9	76.8	138.0
Nuwara Eliya	56.0	167.8	74.5	117.1	63.7	171.2	76.1	118.9	78.4	168.6	87.3	124.9
Southern	94.8	230.0	98.3	154.4	92.3	221.5	97.8	145.7	98.3	217.2	102.6	144.9
Galle	91.7	241.0	98.3	152.8	85.6	217.8	92.9	136.7	91.5	215.1	99.3	138.2
Matara	102.2	224.4	101.6	157.8	97.5	225.8	102.1	153.0	95.7	223.3	101.0	146.9
Hambantota	91.0	220.2	93.6	152.7	100.5	222.1	102.3	153.7	116.5	212.6	111.7	154.5
Northern	66.7	213.3	94.7	131.0	72.9	199.7	97.0	130.1	76.5	197.5	94.8	129.1
Jaffna	64.4	220.6	91.4	128.8	68.9	216.8	95.3	131.1	75.1	196.3	92.0	127.0
Kilinochchi	74.0	238.2	93.9	137.8	69.7	189.2	92.9	123.3	76.1	211.3	101.0	134.4
Mannar	91.7	186.5	86.3	130.9	72.7	154.3	79.4	111.0	74.2	180.3	77.4	119.8
Vavuniya	72.0	188.8	118.2	132.6	104.0	173.9	99.7	132.8	87.3	202.9	104.0	134.8
Mullaitivu	56.9	203.5	102.0	136.3	78.0	185.5	117.5	141.2	73.8	204.5	104.0	138.3
Eastern	59.3	130.0	60.7	95.8	55.1	134.7	56.9	93.2	67.7	139.5	62.0	101.5
Batticaloa	61.7	125.0	65.9	95.2	57.7	122.5	61.4	91.7	72.0	139.1	66.8	104.8
Ampara	55.2	145.8	51.1	99.2	57.4	141.4	50.9	95.5	66.7	149.4	55.9	103.1
Trincomalee	64.7	109.5	70.9	90.2	47.6	139.2	61.8	91.1	63.6	121.5	68.6	94.5
North Western	72.1	177.3	87.7	133.1	70.8	179.0	92.0	133.1	84.9	178.6	94.1	134.5
Kurunegala	75.3	180.4	85.8	137.6	73.9	182.6	93.6	138.8	88.0	179.5	94.8	138.1
Puttalam	62.6	165.7	91.6	119.5	62.0	165.1	88.5	115.9	76.0	175.1	92.6	123.3
North Central	73.4	180.6	85.8	133.0	74.5	182.3	83.4	130.6	89.4	171.4	83.0	127.2
Anuradhapura	73.3	176.1	78.6	129.5	75.9	181.4	79.1	130.0	91.1	167.8	79.2	124.3
Polonnaruwa	73.6	194.0	103.3	142.7	71.1	184.5	93.0	132.1	83.4	181.7	93.8	135.7
Uva	70.0	201.5	80.3	136.6	79.8	190.2	77.0	131.7	86.5	182.6	81.0	128.7
Badulla	73.7	193.5	80.3	133.0	87.3	184.2	76.4	129.3	88.2	179.4	79.4	125.5
Monaragala	60.2	221.7	80.4	145.7	63.7	204.0	78.4	137.5	82.3	189.0	85.0	135.8
Sabaragamuwa	94.3	228.1	91.4	160.0	97.9	227.7	94.0	158.7	107.3	215.1	97.2	153.7
Ratnapura	103.1	233.3	98.6	166.2	97.1	235.5	102.5	162.4	112.5	226.3	115.9	166.2
Kegalle	87.6	223.4	83.7	154.4	98.8	220.4	84.4	155.0	102.6	204.5	79.3	142.0

Table 8: Gender Parity Index by streams and All A/L by province and district,1991-2007 (Continue)

Province/District	2001				2002				2003			
	Science	Arts	Commerce	All A/L	Science	Arts	Commerce	All A/L	Science	Arts	Commerce	All A/L
Sri Lanka	88.2	190.6	94.4	129.6	88.7	186.1	94.2	129.2	92.1	187.9	95.7	130.9
Western	81.7	221.2	107.7	123.3	84.9	208.6	106.6	123.2	84.0	208.5	105.6	121.8
Colombo	69.9	218.3	97.5	102.6	77.0	201.7	99.8	106.8	70.0	208.1	98.6	103.8
Gampaha	93.0	211.6	112.8	134.5	94.0	197.6	112.9	132.9	103.1	196.3	111.3	133.3
Kalutara	111.3	236.7	129.5	160.7	101.2	231.2	116.4	151.2	108.3	224.5	115.5	149.5
Central	95.7	193.2	85.2	132.9	89.0	192.5	82.4	130.0	91.1	188.7	90.2	132.8
Kandy	100.2	201.0	87.4	134.7	92.8	200.9	83.7	130.8	89.5	193.5	90.7	130.7
Matale	78.6	201.5	78.6	135.1	83.7	190.0	72.1	133.0	120.0	199.3	89.5	152.3
Nuwara Eliya	95.3	164.8	83.3	124.9	76.0	173.8	85.2	125.2	76.3	166.7	89.1	123.5
Southern	103.6	212.1	102.0	143.3	98.3	202.3	99.5	137.7	111.0	223.3	107.7	149.8
Galle	99.3	212.4	99.3	139.4	99.2	206.4	96.9	136.3	118.7	232.9	106.7	153.2
Matara	100.6	219.2	102.9	145.6	95.9	207.1	102.5	141.9	105.2	229.1	108.5	149.3
Hambantota	117.6	201.5	106.4	147.5	99.4	190.1	100.2	135.0	106.1	203.7	108.5	145.0
Northern	80.2	189.7	96.1	129.3	72.7	188.7	94.2	129.3	80.1	179.4	96.7	131.3
Jaffna	78.2	193.0	99.6	130.1	73.1	197.2	96.9	132.8	80.8	180.5	93.8	129.7
Kilinochchi	72.6	197.1	103.5	132.8	86.5	188.8	86.3	129.8	61.5	196.3	70.2	129.7
Mannar	81.2	179.7	80.1	124.7	63.9	170.4	81.1	118.5	99.4	161.6	97.1	131.0
Vavuniya	96.8	191.0	84.1	126.1	79.0	190.9	104.9	131.7	83.3	179.7	132.5	141.2
Mullaitivu	76.9	176.3	102.2	130.3	55.0	159.9	88.4	116.3	55.3	180.2	86.9	131.1
Eastern	67.7	138.4	59.8	100.5	73.3	139.1	61.5	104.5	69.4	145.9	60.5	106.1
Batticaloa	69.0	139.9	66.5	105.1	72.9	150.3	64.6	112.0	66.5	161.0	61.8	114.0
Ampara	67.9	148.3	52.6	101.5	70.8	140.8	55.6	101.1	66.9	151.1	54.5	103.2
Trincomalee	65.4	118.0	67.5	93.3	82.0	124.1	71.1	103.0	85.5	119.8	73.5	102.7
North Western	80.8	175.5	93.6	130.0	79.6	171.9	89.2	127.0	84.3	170.2	89.8	127.2
Kurunegala	81.5	175.0	95.0	132.5	82.4	172.4	91.0	130.6	89.8	168.2	89.1	129.9
Puttalam	78.9	177.5	90.7	122.7	72.3	169.6	85.0	115.9	71.6	177.5	91.5	119.6
North Central	87.1	167.8	82.1	123.8	83.6	175.9	91.9	131.1	103.5	180.8	82.6	133.9
Anuradhapura	85.6	163.5	80.0	121.1	80.5	166.5	88.5	124.6	108.8	174.7	78.5	131.1
Polonnaruwa	91.6	179.9	87.4	131.3	94.3	200.7	100.0	149.0	90.4	195.1	91.5	140.5
Uva	92.6	192.5	79.6	132.1	106.0	199.2	92.0	144.0	103.4	210.1	91.0	145.4
Badulla	101.8	187.8	78.8	130.0	118.4	193.2	95.7	144.9	120.8	201.3	91.2	146.8
Monaragala	72.4	201.6	81.7	136.6	80.8	210.8	85.0	142.3	73.9	229.4	90.4	142.5
Sabaragamuwa	106.3	211.7	96.5	151.5	117.4	197.6	95.0	147.6	121.5	191.5	97.4	146.0
Ratnapura	113.1	223.4	114.5	163.9	114.2	208.6	109.5	154.2	127.5	210.8	118.4	161.5
Kegalle	100.0	200.9	79.9	140.0	121.1	187.4	79.5	140.8	115.3	174.6	77.2	131.5

Table 8: Gender Parity Index by streams and All A/L by province and district,1991-2007 (Continue)

Province/District	2004				2005				2006			
	Science	Arts	Commerce	All A/L	Science	Arts	Commerce	All A/L	Science	Arts	Commerce	All A/L
Sri Lanka	91.4	191.4	95.8	130.0	90.5	193.7	95.5	129.5	89.9	196.0	88.8	130.7
Western	81.2	211.0	103.9	118.8	79.6	216.1	106.7	120.3	81.8	209.3	101.8	120.0
Colombo	66.7	213.5	94.7	100.0	65.0	212.9	101.4	102.8	71.1	207.0	98.3	104.5
Gampaha	100.1	202.2	113.7	133.3	94.2	211.8	112.9	132.5	96.5	214.6	109.6	135.4
Kalutara	112.6	220.1	113.9	147.5	111.9	226.4	110.0	145.8	97.2	205.0	97.7	133.5
Central	98.9	206.5	98.0	141.5	96.3	205.2	89.1	135.4	94.8	213.5	77.2	136.3
Kandy	106.6	227.9	101.2	148.2	101.9	220.6	89.5	138.7	95.7	225.3	76.5	136.3
Matale	93.0	190.6	85.9	136.4	93.4	207.4	87.1	140.3	106.7	209.6	70.2	139.8
Nuwara Eliya	75.4	172.5	96.6	126.7	78.4	169.5	89.2	122.5	83.2	191.3	85.4	133.7
Southern	112.9	207.6	105.6	142.9	98.9	209.8	103.3	136.2	96.8	209.6	93.7	134.3
Galle	111.5	204.0	100.8	137.8	94.4	202.8	100.3	130.8	87.6	210.5	90.9	128.5
Matara	107.4	215.1	108.3	143.6	91.7	217.7	102.3	133.7	90.5	200.9	86.9	126.8
Hambantota	123.6	203.9	111.8	151.2	119.3	212.3	111.4	150.3	122.5	219.3	111.7	156.0
Northern	80.0	171.2	83.9	126.3	93.1	163.1	74.6	124.3	87.4	164.7	87.0	130.6
Jaffna	82.1	169.3	83.3	125.4	107.8	161.6	69.6	125.4	86.2	164.4	89.3	129.8
Kilinochchi	62.8	225.3	81.7	149.0	92.9	190.3	73.2	133.5	89.2	152.7	71.8	119.8
Mannar	83.3	147.5	75.0	112.2	76.1	151.8	80.4	116.3	84.6	157.6	77.5	122.9
Vavuiya	83.4	186.0	86.1	131.4	66.9	174.4	81.6	123.7	109.1	173.8	110.4	148.4
Mullaitivu	59.4	156.6	98.9	125.7	56.0	150.6	94.3	119.3	70.8	172.1	74.2	131.2
Eastern	77.2	151.9	64.1	112.3	77.5	155.5	61.7	113.3	83.5	159.2	57.8	118.2
Batticaloa	73.0	170.2	59.5	120.8	76.5	167.1	59.3	119.3	88.2	162.6	50.1	122.5
Ampara	76.0	157.7	60.6	110.4	75.8	161.4	56.1	111.7	83.8	163.1	51.6	116.6
Trincomalee	89.0	123.9	76.5	106.4	85.7	130.6	76.8	109.0	76.4	146.6	79.4	115.9
North Western	84.8	178.2	90.8	128.3	86.2	179.9	91.2	128.3	84.1	188.7	84.9	132.9
Kurunegala	89.8	177.9	91.9	131.8	88.6	175.2	89.0	128.0	85.1	188.0	81.6	132.8
Puttalam	71.9	179.4	87.8	118.0	79.3	198.1	96.9	129.1	81.1	191.2	93.6	133.4
North Central	88.4	188.6	85.8	131.4	89.4	193.5	88.7	134.4	91.7	191.8	78.3	134.5
Anuradhapura	88.8	194.0	82.8	131.5	90.8	195.9	87.9	135.0	91.0	185.5	76.8	131.7
Polonnaruwa	87.3	177.4	92.7	131.1	86.1	188.8	90.2	133.0	93.5	207.6	81.4	141.1
Uva	91.5	214.9	90.4	139.7	106.0	211.3	91.2	143.2	93.0	218.3	84.1	143.3
Badulla	96.7	211.2	87.7	139.1	109.4	207.1	90.5	142.9	93.7	211.6	85.3	141.4
Monaragala	81.5	223.3	96.3	141.0	98.9	221.7	92.7	143.7	91.7	232.5	81.7	147.1
Sabaragamuwa	112.9	196.0	95.3	142.0	114.3	206.9	98.5	145.8	110.8	210.7	88.0	145.0
Ratnapura	110.5	192.1	112.2	144.7	120.5	209.3	116.4	154.8	122.4	218.2	104.3	156.4
Kegalle	115.7	200.0	78.2	139.1	108.2	204.5	80.4	136.9	100.8	203.4	70.9	133.9

Table 8: Gender Parity Index by streams and All A/L by province and district,1991-2007 (Continue)

Province/District	2007			
	Science	Arts	Commerce	All A/L
Sri Lanka	91.1	199.4	90.6	132.2
Western	80.7	216.7	104.9	121.5
Colombo	69.2	202.3	100.0	103.4
Gampaha	97.2	215.9	111.9	135.9
Kalutara	97.0	236.7	105.7	145.2
Central	103.3	212.2	76.6	137.1
Kandy	108.3	229.6	78.0	140.5
Matale	101.0	213.0	66.7	138.4
Nuwara Eliya	89.7	175.5	80.6	126.8
Southern	98.7	212.4	93.5	135.7
Galle	87.3	221.3	93.3	130.2
Matara	100.2	199.2	88.0	131.3
Hambantota	117.4	217.8	103.3	152.3
Northern	81.0	166.3	83.2	129.6
Jaffna	82.7	164.2	83.9	129.5
Kilinochchi	86.8	184.2	99.5	139.5
Mannar	62.7	156.2	74.2	115.2
Vavuiya	84.5	172.7	79.3	133.8
Mullaitivu	79.3	170.1	78.9	134.1
Eastern	83.8	157.0	57.3	116.5
Batticaloa	83.8	172.7	51.1	124.3
Ampara	78.4	159.2	53.3	113.9
Trincomalee	101.3	132.6	72.9	111.7
North Western	89.6	193.6	87.8	137.8
Kurunegala	93.1	189.3	82.6	136.5
Puttalam	80.1	207.8	101.5	141.4
North Central	85.9	186.3	80.3	131.4
Anuradhapura	83.5	177.5	77.9	127.4
Polonnaruwa	91.7	209.1	85.0	140.7
Uva	94.2	231.3	79.9	147.1
Badulla	98.3	223.6	77.3	143.9
Monaragala	86.3	247.0	85.3	153.6
Sabaragamuwa	113.2	215.2	96.0	149.9
Ratnapura	119.6	224.4	110.8	160.0
Kegalle	107.1	205.9	80.4	139.8

Appendix :

Education Zones, Educational Divisions by District

Province : Western

District	Educational Zone	Educational Division	
Colombo	Colombo	Colombo - North	
		Colombo - Central	
		Colombo - South	
		Borella	
	Homagama	Homagama	
		Hanwella	
		Padukka	
	Sri Jaya'pura	Kolonnawa	
		Nugegoda	
		Maharagama	
		Kaduwela	
	Piliyandala	Dehiwala	
Moratuwa			
Kesbewa			
Gampaha	Gampaha	Gampaha	
		Attanagalla	
		Dompe (Weke)	
	Minuwangoda	Mirigama	
		Minuwangoda	
		Divulapitiya	
	Negombo	Katana	
		Negombo	
		Ja-ela	
	Kelaniya	Mahara	
		Biyagama	
		Kelaniya	
		Wattala	
	Kalutara	Kalutara	Kalutara
			Beruwala
Panadura			
Dodangoda			
Matugama		Matugama	
		Agalawatta I	
		Walallawita	
		Agalawatta II	
Horana		Bandaragama	
		Horana	
		Bulathsinhala	

Appendix :

Education Zones, Educational Divisions by District

Province : Central

District	Educational Zone	Educational Division
Kandy	Kandy	Gangawata Korale
		Patha Hewaheta
	Denuwara	Yatinuwara
		Udu Nuwara
	Gampola	Gampola-Udupalatha
		Ganga-Ihala Korale
		Pasbage Korale
	Teldeniya	Minipe
		Medadumbara
		Ududumbara
	Wattegama	Kundasale
		Patha Dumbara
		Panvila
	Katugastota	Harispattuwa
Tumpane		
Poojapitiya		
Akurana		
Matale	Matale	Matale
		Rattota
		Yatawatta
		Ukuwela
	Galewela	Galewela
		Dambulla
		Pallepola
	Naula	Ambanganga Koralya
		Naula
	Wilgamuwa	Wilgamuwa
		Laggala
Nuwara Eliya	Nuwara Eliya	Nuwara Eliya - Sinhala
		Nuwara Eliya T - I
		Nuwara Eliya T - II
		Nuwara Eliya T - III
	Kotmale	Kotmale
	Hatton	Ambagamuwa
		Hatton (Tamil - I)
		Hatton (Tamil - II)
		Hatton (Tamil - III)
	Walapane	Walapane(Sinhala)
	Hanguranketha	Hanguranketha

Appendix :

Education Zones, Educational Divisions by District

Province : Southern

District	Educational Zone	Educational Division	
Galle	Galle	Galle	
		Habaraduwa	
		Akmeemana	
			Baddegama
	Elpitiya	Elpitiya	Elpitiya
			Bentota
			Karandeniya
			Divitura Welivitiya
			Pitigala (Niyagama)
	Ambalangoda	Ambalangoda	Hikkaduwa
			Ambalangoda
			Balapitiya
Udugama	Udugama	Mapalagama	
		Udugama	
		Tawalama	
Matara			
Matara	Matara	Matara	
		Weligama	
		Devinuwara	
			Dikwella
	Akuressa	Akuressa	Akuressa
			Welipitiya
	Mulatiyana (Hakmana)	Mulatiyana	Malimboda
			Thihagoda
			Hakmana
	Morawaka	Morawaka	Mulatiyana
			Kamburupitiya
			Morawaka
			Pasgoda
			Kotapola
	Hambantota		
Hambantota	Tangalle	Tangalle	
		Beliatta	
		Angunakolapelessa	
Hambantota	Hambantota	Hambantota	
		Tissamaharama	
		Ambalantota	
		Lunugamvehera	
		Suriyawewa	
Walasmulla	Walasmulla	Katuwana	
		Walasmulla	

Appendix :

Education Zones, Educational Divisions by District

Province : Northern

District	Educational Zone	Educational Division	
Jaffna	Jaffna	Jaffna	
		Nallur	
		Kopay	
	Islands	Kayts	
		Delft	
		Velanai	
	Thenmarachchi	Chavakachcheri	
		Valikamam	Uduvil
			Chankanai
Sandilipay			
Tellippalai			
	Vadamarachchi	Point Pedro	
		Karaveddy	
		Maruthankerny	
Kilinochchi	Kilinochchi	Karachchi	
		Kandawalai	
		Pallai	
		Poonahary	
Mannar	Mannar	Mannar	
		Musali	
		Nanaddan	
	Madhu	Manthai West	
		Madhu	
Vavuniya	Vavuniya South	Vavuniya South - Sinhala	
		Vavuniya South - Tamil	
		Vengalachettikulam	
	Vavuniya North	Vavuniya North	
		Omanthai	
Mullaitivu	Mullaitivu	Maritime Pattu	
		Puthukkudiyiruppu	
	Thunukkai	Thunukkai	
		Manthai East	
		Oddusudan	

Appendix :

Education Zones, Educational Divisions by District

Province : Eastern

District	Educational Zone	Educational Division
Batticaloa	Batticaloa	Manmunai - North
		Eravur Pattu (Chenkalady)
		Manmunai Pattu
		Manmunai - West
	Kalkudah	Koralapattu North (Vakarai)
		Koralaipattu (Valaichchenai)
		Koralapattu West
		Eravurpattu - 2 (Chenkalady)
	Paddrippu	M.S.E. Pattu
		Porativupattu (Vellaveli)
		Manmunai-S. West
	Batticaloa Central	Eravur
Koralaipattu West		
Kattankudy		
Ampara	Ampara	Ampara
		Uhana
		Damana
		Lahugala
	Kalmunai	Kalmunai
		Ninthavur
		Karaitivu
		Kalmunai Tamil
		Sainthamaruthu
	Sammanthurai	Sammanthurai
		Iragakkaman
		Navithanveli
	Mahaoya	Padiyatalawa
		Mahaoya
	Dehiattakandiya	Dehiattakandiya
	Akkaraipattu	Addalachchenai
		Akkaraipattu
		Alayativembu
		Potuvil
		Tirukkivil

Appendix :

Education Zones, Educational Divisions by District

Province : Eastern

District	Educational Zone	Educational Division
Trincomalee	Trincomalee	Trincomalee Town
		Kuchchaveli
		Thampalakamam
		Gomarankadawala
		Morawewa
		Padavi Sripura
	Mutur	Kinniya
		Mutur
		Eechchilampattu
	Kanthale	Kanthale
		Seruwila

Appendix :

Education Zones, Educational Divisions by District

Province : North Western

District	Educational Zone	Educational Division
Kurunegala	Kurunegala	Kurunegala
		Polgahawela
		Mawathagama
	Kuliyapitiya	Panduwasnuwara
		Bingiriya
		Kuliyapitiya - West
		Udubaddawa
		Dahanakgedara
	Nikaweratiya	Wariyapola
		Kobeigane
		Nikaweratiya
		Kotavehera
	Maho	Maho
		Polpitiyagama
		Galgamuwa
		Giribawa
	Giriulla	Kuliyapitiya - East
		Alawwa
		Pannala
	Ibbagamuwa	Ridigama
		Ibbagamuwa
		Ganewatta
Puttalam	Puttalam	Puttalam North
		Anamaduwa
		Kalpitiya
		Pallama
		Puttalam South
	Chilaw	Chilaw
		Arachchikattuwa
		Nattandiya
		Wennappuwa

Appendix :

Education Zones, Educational Divisions by District

Province : North Central

District	Educational Zone	Educational Division
Anuradhapura	Anuradhapura	Nuwaragam Palatha East
		Nuwaragam Palatha Central
		Rambewa
		Nochchiiyagama
		Wilachchiya
		Nachchaduwa
	Tambuttegama	Tambuttegama
		Talawa
		Rajanganaya
		Galnewa
	Kekirawa	Kekirawa
		Palugaswewa
		Palagala
		Thirappane
		Ipalogama
	Galenbindunuwewa	Galenbindunuwewa
		Kahatagasdigiliya
		Mihintale
	Kebithigollewa	Kebithigollewa
		Padaviya
		Horowpathana
		Medawachchiya
Polonnaruwa	Polonnaruwa	Tamankaduwa
		Lankapura
	Hingurakgoda	Hingurakgoda
		Medirigiriya
		Elahera
	Dimbulagala	Dimbulagala
		Welikanda
		Aralaganwila

Appendix :

Education Zones, Educational Divisions by District

Province : Uva

District	Educational Zone	Educational Division
Badulla	Badulla	Badulla
		Haliela
		Soranathota
		Meegahakivula
		Kandeketiya
	Bandarawela	Bandarawela
		Haldummulla
		Haputale
		Ella
	Mahiyanganaya	Mahiyanganaya
		Ridimaliyedda
	Welimada	Uva-Paranagama
		Welimada
	Passara	Passara
Monaragala		
Monaragala	Monaragala	Siyambalanduwa
		Monaragala
		Badalkumbura
	Wellawaya	Buttala
		Wellawaya
		Tanamalwila
	Bibile	Madulla
		Bibile
		Medagama

Appendix :

Education Zones, Educational Divisions by District

Province : Sabaragamuwa

District	Educational Zone	Educational Division
Ratnapura	Ratnapura	Ratnapura 1
		Pelmadulla
		Eheliyagoda
		Kuruwita
		Ratnapura 2
	Balangoda	Balangoda
		Imbulpe
		Weligepola
	Nivitigala	Nivitigala
		Ayagama
		Kalawana
		Kahawatta
	Embilipitiya	Godakawela
		Kolonne
		Embilipitiya
Kegalle	Kegalle	Kegalle
		Galigamuwa
		Warakapola
		Dedigama
	Mawanella	Mawanella
		Rambukkana
		Aranayaka
	Dehiowita	Ruwanwella
		Dehiowita
		Deraniyagala
		Yatiantota
		Kitulgala

Worked Team

Statistics Branch – Ministry of Education

A team headed by Mrs.K.M.D.S.D.Karunaratne, Senior Statistician has been prepared this publication.

Checking of information, preparation of the report and overall guidance

Mrs.K.M.D.S.D.Karunaratne, Senior Statistician

Mr.M.M.M.Thaiyar, Statistician of this branch assisted her.

Census of Government schools

Preparation of programmes for data entry and error checking

Mr. B.W.Wickramasinghe, System Analyst / Programmer

Manual checking of information and data entry

A team comprising of Data Entry Operators / Coding Clerks Mr.N.I.Perera, Mrs.Shirani Jayalath, Mrs.Pathmini Swarnakanthi, Mrs.Dayana Joseph, Mr.M.T.Rizmy, Mr.K.A.D.S.S.Kodikara, Miss.J.M.C.M.Jayasekara and Management Assistants Miss.J.K.R.Lakmini, Mr.A.H.Prasanna and Miss.D.S.Ranaweera.

Data processing and preparation of tables

R.D.N.Karunasiri, Statistical Officer

Preparation of maps and the cover page

R.D.N.Karunasiri, Statistical Officer

Coordination of Tamil medium activities

Mr.M.M.M.Thaiyar, Statistician

Other censuses

Private schools - Mrs.C.L.Nakandala, Statistical Officer
W.K.Sureka Sanjeevani, Data Entry Operator / Coding Clerk
A.G.Prasadini Samanlatha, Data Entry Operator / Coding Clerk

Pirivenas - Mrs.D.D.Basnayake, Statistical Officer
Mrs.T Weliwatta, Development Assistant

TTCs and NCOEs - Mr.R.D.N.Karunasiri, Statistical Officer
Mr.K.A.D.S.S.Kodikara, Data Entry Operators / Coding Clerk

Information of education administration areas

Mrs.W.D.T.D. Weliwatta, Development Assistant

MDG Indicators on Education

Preparation of data for the years 1991-1995

A team comprising of Data Entry Operators / Coding Clerks Mr.N.I.Perera, Mrs.Shirani Jayalath, Mrs.Pathmini Swarnakanthi, Mrs.Dayana Joseph, Mr.M.T.Rizmy, Miss.J.M.C.M.Jayasekara and Management Assistant Miss.J.K.R.Lakmini.

Calculation of MDG indicators

Mr. B.W.Wickramasinghe, Programmer
Mrs.D.D.Basnayake, Statistical Officer
Mrs.C.L.Nakandala, Statistical Officer
Mrs.W.D.T.D. Weliwatta, Development Assistant

Preparation of graphs

Mr.M.M.M.Thaiyar, Statistician

Supporting staff

Mr.K.P.P.Ratnayake, Comptometer Operator
Mr.Sanjeewa Pathmakumara, KKS