



Sri Lanka Labour Force Survey is designed to measure the levels and trends of employment, unemployment and labour force in Sri Lanka. This survey is being conducted quarterly, since the first quarter of 1990.

The field work of the survey for the third quarter 2010 was done in July, August and September in year 2010. Even though it was planned to conduct the survey in Northern province, the survey was not conducted fully due to unsettled conditions in districts of Northern province, therefore this bulletin consists of summary statistics excluding Northern province.

Labour force participation rate

Labour Force: Number of persons (age 10 & above) who were employed or unemployed during the reference week

Labour force participation rate: Labour force expressed as a percentage of population age 10 yr. & over

Table 1: Economically active population by sex and sector - Third Quarter 2010

Sector	Economically active population					
	Total	%	Male	%	Female	%
Total	7971735	100.0	5327966	66.8	2643769	33.2
Urban	1010227	100.0	697787	69.1	312440	30.9
Rural	6502475	100.0	4356031	67.0	2146443	33.0
Estate	459032	100.0	274147	59.7	184885	40.3

Table 2: Economically Inactive population by sex and sector - Third Quarter 2010

Sector	Economically inactive population					
	Total	%	Male	%	Female	%
Total	8844753	100.0	2613098	29.5	6231655	70.5
Urban	1391543	100.0	413854	29.7	977690	70.3
Rural	7121132	100.0	2092470	29.4	5028662	70.6
Estate	332078	100.0	106774	32.2	225304	67.8

The survey results revealed that (Table 1), the estimated economically active population (or labour force) was about 8.0 million in third quarter 2010. Of which 66.8 percent were males and 33.2 percent were females. Out of the economically inactive population 29.5 percent were males and 70.5 percent were females (Table 2).

Figure 1 : Distribution of Economically active/Inactive population

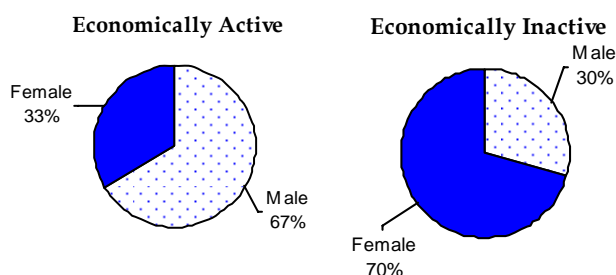


Table 3: Labour Force Participation Rate by sex & year

Year	Labour force participation rate		
	Total	Male	Female
2000	50.3	67.2	33.9
2001	48.8	66.2	31.9
2002	50.3	67.9	33.6
2003	49.7	67.5	32.6
2004	49.6	67.2	33.0
2005	49.3	67.3	32.6
2006	51.2	68.1	35.7
2007	49.8	67.8	33.4
2008	50.2	67.9	34.3
2009	49.2	66.7	33.7
2010Q1	49.1	67.8	32.7
2010Q2	48.5	67.6	31.6
2010Q3	47.7	67.1	30.4

Table 3 provides the information on labour force participation rates since year 2000. As can be seen from this table, male participation rate for the third quarter 2010 was about 67.1 percent and it was 30.4 percent for females. It was important to note that, male participation to the labour force was more than twice as that of females.

Note: Excluding Northern & Eastern provinces

Table 4 : Labour Force Participation Rate by age group & by sex - Third Quarter 2010

Age group	Sex		
	Total	Male	Female
Total	47.4	67.1	29.8
15 - 19	17.4	22.9	11.5
20 - 24	53.7	70.6	39.4
25 - 29	63.1	92.9	37.4
30 - 34	66.3	96.8	38.9
35 - 39	67.1	97.8	41.6
40 - 44	70.3	95.0	48.0
45 - 49	69.3	94.5	47.5
50 - 54	63.9	90.7	40.7
55 - 59	55.3	79.0	32.6
60+	27.3	45.4	11.9

The distribution of labour force participation rate by age group and by sex depicts more male participation compared to female in all age groups.

Highest male participation rate was reported from age group (35 - 39) yrs, while in female highest participation rate was reported from age group (40 - 44) yrs.

Employment

Employed: Persons who are engaged in some kind of work for pay or profit or family gain during the reference week.

Table 5 : Distribution of Employed population by main industry, (Third Quarter 2009 - Third Quarter 2010)

Year	Total	Major industry group		
		Agriculture	Industries	Services
July-Aug-Sept. 3rd Qtr - 2009	7641730 100.0	2426113 31.7	1912169 25.0	3303448 43.2
Oct-Nov-Dec 4th Qtr - 2009	7592833 100.0	2481308 32.7	1920825 25.3	3190700 42.0
Jan-Feb-Mar 1st Qtr - 2010	7725753 100.0	2600463 33.7	1911428 24.7	3213861 41.6
April-May-June 2nd Qtr - 2010	7613267 100.0	2439391 32.0	1795204 23.6	3378672 44.4
July-Aug-Sept. 3rd Qtr - 2010	7578174 100.0	2367294 31.2	1850442 24.4	3360438 44.3

Note: The tabulation groups based on ISIC (Rev.3) are indicated as A,B,C.....Q..

Agriculture

1. Agriculture (A)
2. Forestry and Fishery (B)

Industries

1. Manufacturing (D)
2. Construction (F)
3. Mining & Quarrying (C)
4. Electricity, Gas and Water supply (E)

Services

1. Wholesale and Retail Trade, Repair of Motor Vehicles, Motorcycles and Personal and Household Goods (G)
2. Hotels and Restaurants (H)
3. Transport, Storage and Communication (I)
4. Financial Intermediation and Real Estate, Renting and Business Activities (J,K)
5. Public Administration and Defence, Compulsory Social Security (L)
6. Education (M)
7. Health and Social work (N)
8. Other Community, Social and Personal Service Activities (O)
9. Private Households with Employed Persons (P)
10. Miscellaneous Labour work
11. Extra Territorial Organizations & bodies (Q)
12. Industries not adequately described

Table 5 shows the percentage distribution of employed population by main industry from third quarter 2009 to third quarter 2010. The total number of employed persons in Sri Lanka was estimated as about 7.6 million in third quarter 2010. Of which, about 44.3 percent engaged in services sector, 31.2 percent in agriculture sector, and 24.4 percent in Industries sector.

Table 6 : Percentage distribution of employed population by employment status and Agriculture/ Non-Agriculture sector - Third Quarter 2010

Employment Status	Total		Sector			
			Agriculture		Non Agriculture	
	No.	%	No.	%	No.	%
Total	7578174	100.0	2367294	31.2	5210880	68.8
Employee	4217412	100.0	736318	17.5	3481094	82.5
Public	1102793	100.0	127998	11.6	974795	88.4
Private	3114619	100.0	608320	19.5	2506299	80.5
Employer	234465	100.0	43896	18.7	190569	81.3
Own account worker	2405946	100.0	1089906	45.3	1316040	54.7
Contributing family worker	720351	100.0	497173	69.0	223178	31.0

Table 6 shows that, comparatively higher percentage of employees both in private & public sector engage in non-agricultural activities. Also more employers were in non agriculture sector than in agriculture sector. But contributing family workers were more concentrated in agriculture sector.

Table 7 : Distribution of Employed population by main industry & sex - Third Quarter 2010

Major industry group	Total	Sex	
		Male	Female
Total	100.0	100.0	100.0
Agriculture	31.2	29.1	35.7
Industry	24.4	24.2	24.8
Services	44.3	46.6	39.5

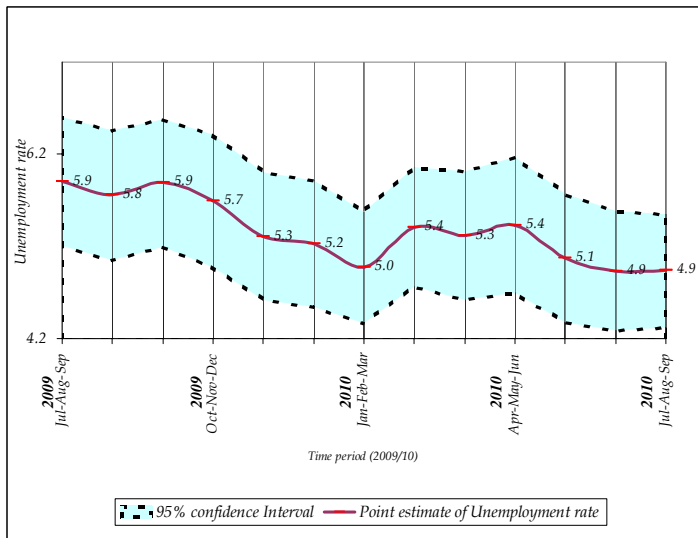
Table 7 depicts the distribution of male and female employed population by main industries. Highest employment concentrated in service sector for both male and female. Further among employed women about 35.7 percent was in agriculture sector while this share was 29.1 percent for males.

Unemployment

Unemployment Rate : The number of unemployed persons as a percentage of the labour force

Unemployed : Persons who are seeking and available for work, but had no employment during the reference period

Figure 2 : Unemployment rates and it's 95% confidence intervals (2009 July - 2010 Sept.)



The number of unemployed persons was estimated as about 393,560 during the third quarter 2010.

The unemployment rate for the third quarter 2010 was reported as 4.9 percent.

As seen in figure 2, it is very important to note that, there were no statistically significant difference between the unemployment rates reported in different time periods of 2009/2010, when *sampling error*⁽¹⁾ was considered.

Table 8: Unemployment rate by level of education - Third Quarter 2010

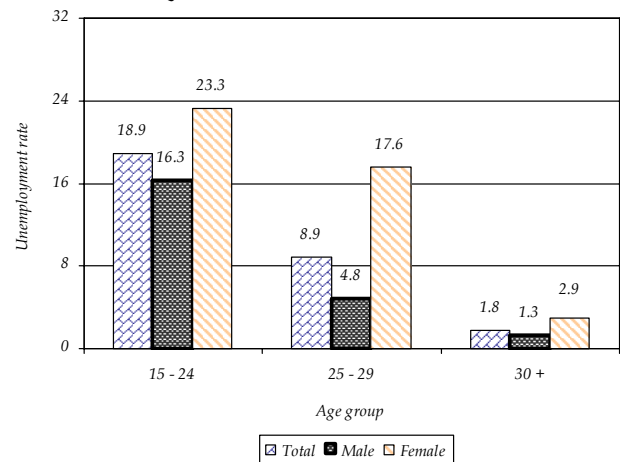
Level of Education	Unemployment rate		
	Total	Male	Female
Total	4.9	3.6	7.7
Below G.C.E. (O/L)	2.7	2.2	3.8
G.C.E. (O/L)	7.5	6.1	10.5
G.C.E. (A/L) & above	11.1	7.5	15.6



Table 9: Unemployment rate by age group and sex - Third Quarter 2010

Age group	Total	Sex	
		Male	Female
Total	4.9	3.6	7.7
15 - 24	18.9	16.3	23.3
25 - 29	8.9	4.8	17.6
30 +	1.8	1.3	2.9

Figure 3 : Unemployment rate by age group and sex - Third Quarter 2010



As can be seen from table 9, overall unemployment rate reported for female was 7.7 percent and it was 3.6 percent for male. Youth unemployment rate 15 - 24 yrs reported for third quarter 2010 was 18.9. Highest unemployment rate was reported from age group 15 - 24 yrs, for both males (16.3) and females (23.3). Further the survey results revealed that the unemployment was severe among females than that of males, in all age groups.

The highest unemployment rate was reported from the G.C.E(A/L) and above group which was about 11.1 percent. There were 7.5 percent and 15.6 percent for males and females respectively. This shows the problem of unemployment is more acute in the case of educated females than educated males (Table 8).

⁽¹⁾ Sampling error :

When a sample, rather than the entire population, is surveyed, estimates differ from the true population values they represent. This difference, or sampling error, occurs by chance, and its variability is measured by the standard error of the estimate. **For more details, please refer the explanatory note on the labour force link in the DCS website.**

Selected Labour Force indicators (Excluding Northern & Eastern provinces)
(2002 - 2010 Q3)

	Year												*2010Q3
	2002	2003	2004	2005	2006	2007	2008	2009	2010Q1	2010Q2	2009Q3	2010Q3	
Labour force participation rate													
<i>by sex</i>													
Both sexes	50.3	49.7	49.6	49.3	51.2	49.8	50.2	49.2	49.1	48.5	49.3	47.7	47.4
Male	67.9	67.5	67.2	67.3	68.1	67.8	67.9	66.7	67.8	67.6	66.3	67.1	67.1
Female	33.6	32.6	33.0	32.6	35.7	33.4	34.3	33.7	32.7	31.6	34.3	30.4	29.8
<i>by residential sector</i>													
Total	50.3	49.7	49.6	49.3	51.2	49.8	50.2	49.2	49.1	48.5	49.3	47.7	47.4
Urban	46.0	45.1	45.6	46.2	45.3	45.0	46.3	43.9	44.1	42.3	45.8	41.5	42.1
Rural	50.9	50.3	50.3	49.7	52.1	50.4	50.7	49.8	49.8	49.3	49.7	48.6	48.3
Unemployment rate													
<i>by sex</i>													
Both sexes	8.8	8.1	8.1	7.2	6.5	6.0	5.2	5.7	5.1	5.4	5.8	4.7	4.9
Male	6.6	6.0	6.0	5.3	4.7	4.3	3.6	4.3	3.5	4.2	4.4	3.4	3.6
Female	12.9	12.3	12.1	10.7	9.7	9.0	8.0	8.2	7.9	7.7	8.1	7.4	7.7
<i>by selected age groups(yr)</i>													
20 - 29	20.1	19.1	18.6	16.0	15.9	15.0	13.2	15.1	14.5	14.9	15.3	13.1	13.8
20 - 24	27.0	25.8	25.2	22.4	21.0	21.1	17.8	21.0	20.1	20.4	21.6	18.1	19.2
25 - 29	11.6	11.4	11.1	9.4	11.0	9.4	9.0	10.1	9.8	10.0	9.9	8.6	8.9
<i>by selected educational levels</i>													
G.C.E.(A/L) & above													
Both sexes	16.8	16.0	15.7	12.2	11.6	11.8	9.9	10.8	11.9	12.3	10.3	10.6	11.1
Male	10.8	10.1	9.6	7.9	6.9	6.6	5.6	6.6	7.8	8.6	6.9	6.6	7.5
Female	23.0	22.4	22.5	17.1	16.8	17.5	14.4	15.1	16.4	16.2	13.7	15.4	15.6
Employed population													
<i>by sex</i>													
Both sexes	6519415	6609466	6704006	6788119	7105322	7041874	7174706	7139537	7287198	7145578	7183604	7092282	7578174
Male	4395164	4496136	4512082	4546397	4610643	4653067	4663277	4609198	4771572	4731075	4598416	4765107	5136913
Female	2124250	2113330	2191924	2241722	2494679	2388807	2511429	2530339	2515626	2414503	2585188	2327175	2441261
<i>by industry (percentage)</i>													
Total	6519415	6609466	6704006	6788119	7105322	7041874	7174706	7139537	7287198	7145578	7183604	7092282	7578174
%	(100.0)	(100.0)	(100.0)	(100.0)	(100.0)	(100.0)	(100.0)	(100.0)	(100.0)	(100.0)	(100.0)	(100.0)	(100.0)
Agriculture	2247602	2223691	2215282	2059293	2287268	2202098	2344415	2318621	2455665	2299235	2292223.7	2197207	2367294
%	(34.5)	(33.6)	(33.0)	(30.3)	(32.2)	(31.3)	(32.7)	(32.5)	(33.7)	(32.2)	(31.9)	(31.0)	(31.2)
Industry	1459194	1539035	1663383	1787274	1889953	1873857	1888004	1822685	1835359	1696088	1833177	1756238	1850442
%	(22.4)	(23.3)	(24.8)	(26.3)	(26.6)	(26.6)	(26.3)	(25.5)	(25.2)	(23.7)	(25.5)	(24.8)	(24.4)
Services	2812619	2846740	2825341	2941552	2928101	2965919	2942288	2998231	2996174	3150255	3058203	3138838	3360438
%	(43.1)	(43.1)	(42.1)	(43.3)	(41.2)	(42.1)	(41.0)	(42.0)	(41.1)	(44.1)	(42.6)	(44.3)	(44.3)
<i>by no. of hours worked per week (percentage)</i>													
Total	100.0	100.0	100.0	100.0	100.0	100.0	100.0	100.0	100.0	100.0	100.0	100.0	100.0
0 •	5.6	7.3	5.3	4.9	6.7	6.5	7.4	7.9	3.8	10.7	6.8	5.1	5.2
1 - 9	1.5	1.8	1.7	1.6	1.9	1.5	2.2	2.4	1.3	2.9	1.9	1.5	1.4
10 - 39	32.0	32.9	28.4	27.9	28.6	28.3	29.2	29.0	28.8	32.2	27.8	26.1	25.8
40+	60.9	58.0	64.7	65.7	62.8	63.7	61.2	60.8	66.0	54.2	63.4	67.4	67.6

• Has a job but not at work during the reference week

*Excluding Northern province

**Selected Labour Force indicators
(2002 - 2010 Q3)**

	Year											
	2002#	2003*	2004**	2005***	2006 #	2007#	2008*	2009*	2010Q1*	2010Q2*	*2009Q3	*2010Q3
Labour force participation rate												
<i>by sex</i>												
Both sexes	50.3	48.9	48.6	48.3	51.2	49.8	49.5	48.7	48.2	47.9	48.7	47.4
Male	67.9	67.2	66.7	67.1	68.1	67.8	67.8	66.6	67.3	67.3	66.2	67.1
Female	33.6	31.4	31.5	30.9	35.7	33.4	33.2	32.8	31.6	30.8	33.2	29.8
<i>by residential sector</i>												
Total	50.3	48.9	48.6	48.3	51.2	49.8	49.5	48.7	48.2	47.9	48.7	47.4
Urban	46.0	44.4	44.9	45.5	45.3	45.0	45.9	43.5	42.8	41.4	44.9	42.1
Rural	50.9	49.6	49.2	48.7	52.1	50.4	50.0	49.4	49.0	48.8	49.2	48.3
Unemployment rate												
<i>by sex</i>												
Both sexes	8.8	8.4	8.3	7.7	6.5	6.0	5.4	5.8	5.0	5.4	5.9	4.9
Male	6.6	6.0	6.0	5.5	4.7	4.3	3.7	4.3	3.4	4.1	4.4	3.6
Female	12.9	13.2	12.8	11.9	9.7	9.0	8.4	8.6	7.9	8.0	8.6	7.7
<i>by selected age groups(yr)</i>												
20 - 29	20.1	19.4	19.2	17.2	15.9	15.0	13.7	15.4	14.3	14.9	15.5	13.8
20 - 24	27.0	26.4	25.9	24.6	21.0	21.1	18.1	21.4	19.7	20.2	21.9	19.2
25 - 29	11.6	11.4	11.4	9.5	11.0	9.4	9.5	10.3	9.7	10.2	10.1	8.9
<i>by selected educational levels</i>												
G.C.E.(A/L) & above												
Both sexes	16.8	16.5	16.8	13.8	11.6	11.8	10.5	11.2	12.0	12.3	10.2	11.1
Male	10.8	10.4	10.5	8.9	6.9	6.6	6.0	7.0	8.0	8.5	6.8	7.5
Female	23.0	23.3	23.8	19.1	16.8	17.5	15.3	15.5	16.7	16.4	13.8	15.6
Employed population												
<i>by sex</i>												
Both sexes	6519415	7012755	7440226	7518007	7105322	7041874	7648305	7602414	7725753	7613267	7641730	7578174
Male	4395164	4833483	5087861	5134765	4610643	4653067	5033449	4963176	5108289	5081075	4970147	5136913
Female	2124250	2179272	2352365	2383241	2494679	2388807	2614856	2639238	2617464	2532192	2671584	2441261
<i>by industry (percentage)</i>												
Total	6519415	7012755	7394029	7518007	7105322	7041874	7648305	7602414	7725753	7613267	7641730	7578174
%	(100.0)	(100.0)	(100.0)	(100.0)	(100.0)	(100.0)	(100.0)	(100.0)	(100.0)	(100.0)	(100.0)	(100.0)
Agriculture	2247602	2384397	2474725	2306039	2287268	2202098	2489731	2475921	2600463	2439391	2426113	2367294
%	(34.5)	(34.0)	(33.5)	(30.7)	(32.2)	(31.3)	(32.6)	(32.6)	(33.7)	(32.0)	(31.7)	(31.2)
Industry	1459194	1611493	1781447	1928014	1889953	1873857	2004880	1910318	1911428	1795204	1912169	1850442
%	(22.4)	(23.0)	(24.1)	(25.6)	(26.6)	(26.6)	(26.2)	(25.1)	(24.7)	(23.6)	(25.0)	(24.4)
Services	2812619	3016866	3137857	3283954	2928101	2965919	3153693	3216175	3213861	3378672	3303448	3360438
%	(43.1)	(43.0)	(42.4)	(43.7)	(41.2)	(42.1)	(41.2)	(42.3)	(41.6)	(44.4)	(43.2)	(44.3)
<i>by no. of hours worked per week (percentage)</i>												
Total	100.0	100.0	100.0	100.0	100.0	100.0	100.0	100.0	100.0	100.0	100.0	100.0
0 •	5.6	7.5	5.2	4.7	6.7	6.5	7.2	7.9	3.7	10.4	7.0	5.2
1 - 9	1.5	1.8	1.6	1.5	1.9	1.5	2.2	2.3	1.3	2.7	1.8	1.4
10 - 39	32.0	32.6	28.7	27.6	28.6	28.3	28.9	28.8	28.6	31.9	27.7	25.8
40+	60.9	58.1	64.5	66.2	62.8	63.7	61.7	61.0	66.5	55.0	63.6	67.6

• Has a job but not at work during the reference week

*Excluding Northern province

** Excluding Mullativu & Kilinochchi districts

***All the districts are included

Excluding Northern & Eastern provinces