



Sri Lanka Labour Force Survey is designed to measure the levels and trends of employment, unemployment and labour force in Sri Lanka. This survey is being conducted quarterly, since the second quarter of 1990.

The field work of the survey for the Second Quarter 2011 was done in April, May and June in year 2011. Even though it was planned to conduct the survey in Northern province, the survey was not conducted fully due to unsettled conditions in districts of Northern province, therefore this bulletin consists of summary statistics excluding Northern province.

Labour force participation rate

Labour Force: Number of persons (age 10 & above) who were employed or unemployed during the reference week

Labour force participation rate: Labour force expressed as a percentage of population age 10 yr. & over

Table 1: Economically active population by sex and sector - Second Quarter 2011

Sector	Economically active population					
	Total	%	Male	%	Female	%
Total	8307635	100.0	5379548	64.8	2928087	35.2
Urban	956901	100.0	642879	67.2	314022	32.8
Rural	6907351	100.0	4494173	65.1	2413177	34.9
Estate	443383	100.0	242496	54.7	200887	45.3

Table 2: Economically Inactive population by sex and sector - Second Quarter 2011

Sector	Economically inactive population					
	Total	%	Male	%	Female	%
Total	8882154	100.0	2734742	30.8	6147411	69.2
Urban	1146729	100.0	343445	29.9	803284	70.1
Rural	7413541	100.0	2273171	30.7	5140370	69.3
Estate	321884	100.0	118126	36.7	203757	63.3

The survey results revealed that (Table 1), the estimated economically active population (or labour force) was about 8.3 million in Second Quarter 2011. Of which 64.8 percent were males and 35.2 percent were females. Out of the economically inactive population 30.8 percent were males and 69.2 percent were females (Table 2).

Figure 1: Distribution of Economically active/Inactive population

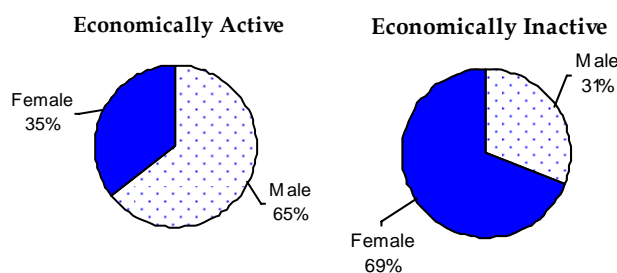


Table 3: Labour Force Participation Rate by sex & year

Year	Labour force participation rate		
	Total	Male	Female
2000	50.3	67.2	33.9
2001	48.8	66.2	31.9
2002	50.3	67.9	33.6
2003	49.7	67.5	32.6
2004	49.6	67.2	33.0
2005	49.3	67.3	32.6
2006	51.2	68.1	35.7
2007	49.8	67.8	33.4
2008	50.2	67.9	34.3
2009	49.2	66.7	33.7
2010	48.6	67.3	32.1
2011 Q1	48.8	66.2	33.2
2011 Q2	48.8	66.4	33.1

Table 3 provides the information on labour force participation rates since year 2000. As can be seen from this table, male participation rate for the Second Quarter 2011 was about 66.4 percent and it was 33.1 percent for females. It is important to note that, male participation to the labour force was almost twice as that of females.

Note: Excluding Northern & Eastern provinces

Table 4: Labour Force Participation Rate by age group & by sex - Second Quarter 2011

Age group	Sex		
	Total	Male	Female
Total	48.3	66.3	32.3
15 - 19	16.6	20.9	12.2
20 - 24	53.9	72.3	39.3
25 - 29	67.8	94.9	43.1
30 - 34	68.9	95.4	45.3
35 - 39	68.8	94.2	47.2
40 - 44	70.3	94.3	50.2
45 - 49	69.1	94.3	49.1
50 - 54	69.1	93.1	45.3
55 - 59	57.3	79.4	35.3
60+	29.1	46.6	14.8

The distribution of labour force participation rate by age group and by sex depicts more male participation compared to female in all age groups.

Highest male participation rate was reported from age group (30 - 34) yrs, while in female highest participation rate was reported from age group (40 - 44) yrs.

Employment

Employed: Persons who are engaged in some kind of work for pay or profit or family gain during the reference week.

Table 5 : Distribution of Employed population by main industry, (Second Quarter 2010 - Second Quarter 2011)

Year	Total	Major industry group		
		Agriculture	Industries	Services
April-May-June 2nd Qtr - 2010	7613267 100.0	2439391 32.0	1795204 23.6	3378672 44.4
July-Aug-Sept. 3rd Qtr - 2010	7578174 100.0	2367294 31.2	1850442 24.4	3360438 44.3
Oct-Nov-Dec 4th Qtr - 2010	7909178 100.0	2672472 33.8	1909857 24.1	3326849 42.1
Jan-Feb-Mar 1st Qtr - 2011	7783574 100.0	2511427 32.3	1951202 25.1	3320945 42.7
April-May-June 2nd Qtr - 2011	7956518 100.0	2684299 33.7	1877724 23.6	3394495 42.7

Note: The tabulation groups based on ISIC (Rev.3) are indicated as A,B,C.....Q..

Agriculture

1. Agriculture (A)
2. Forestry and Fishery (B)
3. Mining & Quarrying (C)
4. Electricity, Gas and Water supply (E)

Industries

1. Manufacturing (D)
2. Construction (F)
3. Mining & Quarrying (C)
4. Electricity, Gas and Water supply (E)

Services

1. Wholesale and Retail Trade, Repair of Motor Vehicles, Motorcycles and Personal and Household Goods (G)
2. Hotels and Restaurants (H)
3. Transport, Storage and Communication (I)
4. Financial Intermediation and Real Estate, Renting and Business Activities (J,K)
5. Public Administration and Defence, Compulsory Social Security (L)
6. Education (M)
7. Health and Social work (N)
8. Other Community, Social and Personal Service Activities (O)
9. Private Households with Employed Persons (P)
10. Miscellaneous Labour work
11. Extra Territorial Organizations & bodies (Q)
12. Industries not adequately described

Table 5 shows the percentage distribution of employed population by main industry from Second Quarter 2010 to Second Quarter 2011. The total number of employed persons in Sri Lanka was estimated as about 7.9 million in Second Quarter 2011. Of which, about 42.7 percent engaged in services sector, 33.7 percent in agriculture sector, and 23.6 percent in Industries sector.

Table 6 : Percentage distribution of employed population by employment status and Agriculture/ Non-Agriculture sector - Second Quarter 2011

Employment Status	Total		Sector			
	No.	%	Agriculture		Non Agriculture	
			No.	%	No.	%
Total	7956518	100	2684299	33.7	5272219	66.3
Employee	4373467	100	793043	18.1	3580424	81.9
Public	1142517	100	105068	9.2	1037449	90.8
Private	3230950	100	687976	21.3	2542974	78.7
Employer	218618	100	48512	22.2	170106	77.8
Own account worker	2512108	100	1227770	48.9	1284338	51.1
Contributing family worker	852325	100	614974	72.2	237351	27.8

Table 6 shows that, comparatively higher percentage of employees both in private & public sector engage in non-agricultural activities. Also more employers were in non agriculture sector than in agriculture sector. But contributing family workers were more concentrated in agriculture sector.

Table 7 : Distribution of Employed population by main industry & sex - Second Quarter 2011

Major industry group	Total	Sex	
		Male	Female
Total	100.0	100.0	100.0
Agriculture	33.7	31.6	37.9
Industry	23.6	23.6	23.6
Services	42.7	44.8	38.5

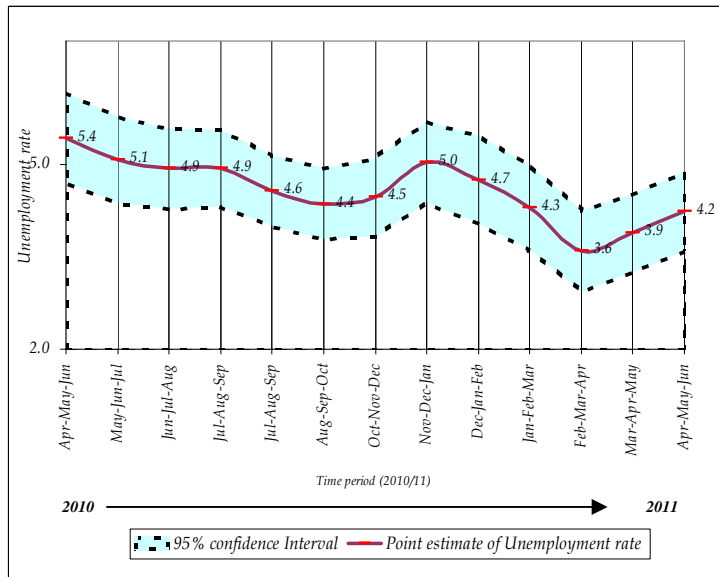
Table 7 depicts the distribution of male and female employed population by main industries. Regardless of sex, highest employment concentrated in service sector. Further among employed women about 37.9 percent was in agriculture sector while this share was 31.6 percent among males.

Unemployment

Unemployment Rate : The number of unemployed persons as a percentage of the labour force

Unemployed : Persons who are seeking and available for work, but had no employment during the reference period

Figure 2 : Unemployment rates and it's 95% confidence intervals (2010 Apr. - 2011 June)



The number of unemployed persons was estimated as about 352,495 during the Second Quarter 2011.

The unemployment rate for the Second Quarter 2011 was reported as 4.2 percent.

As seen in figure 2, it is very important to note that, there were no statistically significant difference between the unemployment rates reported in different time periods of 2010/2011, when *sampling error*⁽¹⁾ was considered.

Table 8: Unemployment rate by level of education - Second Quarter 2011

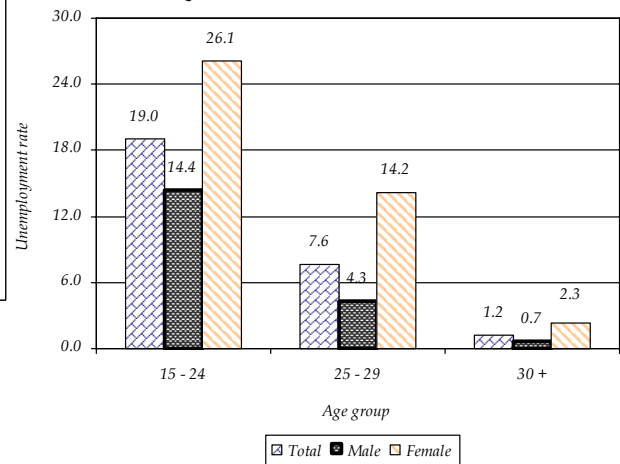
Level of Education	Unemployment rate		
	Total	Male	Female
Total	4.2	2.7	7.0
Below G.C.E. (O/L)	2.7	2.1	4.0
G.C.E. (O/L)	5.8	3.5	10.5
G.C.E. (A/L) & above	7.8	4.4	11.6



Table 9: Unemployment rate by age group and sex - Second Quarter 2011

Age group	Total	Sex	
		Male	Female
Total	4.2	2.7	7.0
15 - 24	19.0	14.4	26.1
25 - 29	7.6	4.3	14.2
30 +	1.2	0.7	2.3

Figure 3 : Unemployment rate by age group and sex - Second Quarter 2011



As can be seen from table 9, overall unemployment rate reported for female was 7.0 percent and it was 2.7 percent for male. Youth unemployment rate 15 - 24 yrs reported for Second Quarter 2011 was 19.0 percent. Highest unemployment rate was reported from age group 15 - 24 yrs, for both males (14.4) and females (26.1). Further the survey results revealed that the unemployment was severe among females than that of males, in all age groups.

The highest unemployment rate was reported from the G.C.E(A/L) and above group which was about 7.8 percent. There were 4.4 percent and 11.6 percent for males and females respectively. This shows the problem of unemployment is more acute in the case of educated females than educated males (Table 8).

⁽¹⁾ Sampling error :

When a sample, rather than the entire population, is surveyed, estimates differ from the true population values they represent. This difference, or sampling error, occurs by chance, and its variability is measured by the standard error of the estimate. **For more details, please refer the explanatory note on the labour force link in the DCS website.**

Selected Labour Force indicators (Excluding Northern & Eastern provinces)
(2003 - 2011 Q2)

	Year											*2011Q2
	2003	2004	2005	2006	2007	2008	2009	2010	2011Q1	2010Q2	2011Q2	
Labour force participation rate												
<i>by sex</i>												
Both sexes	49.7	49.6	49.3	51.2	49.8	50.2	49.2	48.6	48.8	48.5	48.8	48.3
Male	67.5	67.2	67.3	68.1	67.8	67.9	66.7	67.3	66.2	67.6	66.4	66.3
Female	32.6	33.0	32.6	35.7	33.4	34.3	33.7	32.1	33.2	31.6	33.1	32.3
<i>by residential sector</i>												
Total	49.7	49.6	49.3	51.2	49.8	50.2	49.2	48.6	48.8	48.5	48.8	48.3
Urban	45.1	45.6	46.2	45.3	45.0	46.3	43.9	42.5	42.5	42.3	46.0	45.5
Rural	50.3	50.3	49.7	52.1	50.4	50.7	49.8	49.5	49.7	49.3	49.2	48.7
Unemployment rate												
<i>by sex</i>												
Both sexes	8.1	8.1	7.2	6.5	6.0	5.2	5.7	4.9	4.2	5.4	4.1	4.2
Male	6.0	6.0	5.3	4.7	4.3	3.6	4.3	3.5	3.0	4.2	2.7	2.7
Female	12.3	12.1	10.7	9.7	9.0	8.0	8.2	7.5	6.3	7.7	6.5	7.0
<i>by selected age groups(yr)</i>												
20 - 29	19.1	18.6	16.0	15.9	15.0	13.2	15.1	13.7	12.0	14.9	12.8	13.2
20 - 24	25.8	25.2	22.4	21.0	21.1	17.8	21.0	18.9	15.8	20.4	20.1	20.0
25 - 29	11.4	11.1	9.4	11.0	9.4	9.0	10.1	9.1	8.7	10.0	6.9	7.6
<i>by selected educational levels</i>												
G.C.E.(A/L) & above												
Both sexes	16.0	15.7	12.2	11.6	11.8	9.9	10.8	11.3	9.2	12.3	7.4	7.8
Male	10.1	9.6	7.9	6.9	6.6	5.6	6.6	7.5	5.8	8.6	4.2	4.4
Female	22.4	22.5	17.1	16.8	17.5	14.4	15.1	15.6	13.1	16.2	11.0	11.6
Employed population												
<i>by sex</i>												
Both sexes	6609466	6704006	6788119	7105322	7041874	7174706	7139537	7235641	7351776	7145578	7476643	7956517.9
Male	4496136	4512082	4546397	4610643	4653067	4663277	4609198	4770376	4770710	4731075	4859996	5233537.3
Female	2113330	2191924	2241722	2494679	2388807	2511429	2530339	2465265	2581066	2414503	2616647	2722980.7
<i>by industry (percentage)</i>												
Total	6609466	6704006	6788119	7105322	7041874	7174706	7139537	7235641	7351776	7145578	7476643	7956518
%	(100.0)	(100.0)	(100.0)	(100.0)	(100.0)	(100.0)	(100.0)	(100.0)	(100.0)	(100.0)	(100.0)	(100.0)
Agriculture	2223691	2215282	2059293	2287268	2202098	2344415	2318621	2353599	2353311	2299235	2519863	2684299
%	(33.6)	(33.0)	(30.3)	(32.2)	(31.3)	(32.7)	(32.5)	(32.5)	(32.0)	(32.2)	(33.7)	(33.7)
Industry	1539035	1663383	1787274	1889953	1873857	1888004	1822685	1777130	1879606	1696088	1799649	1877724
%	(23.3)	(24.8)	(26.3)	(26.6)	(26.6)	(26.3)	(25.5)	(24.6)	(25.6)	(23.7)	(24.1)	(23.6)
Services	2846740	2825341	2941552	2928101	2965919	2942288	2998231	3104913	3118859	3150255	3157130.3	3394494.7
%	(43.1)	(42.1)	(43.3)	(41.2)	(42.1)	(41.0)	(42.0)	(42.9)	(42.4)	(44.1)	(42.2)	(42.7)
<i>by no. of hours worked per week (percentage)</i>												
Total	100.0	100.0	100.0	100.0	100.0	100.0	100.0	100.0	100.0	100.0	100.0	100.0
0 •	7.3	5.3	4.9	6.7	6.5	7.4	7.9	6.1	3.7	10.7	7.9	7.7
1 - 9	1.8	1.7	1.6	1.9	1.5	2.2	2.4	1.8	1.5	2.9	2.6	2.5
10 - 39	32.9	28.4	27.9	28.6	28.3	29.2	29.0	28.6	29.6	32.2	34.5	33.9
40+	58.0	64.7	65.7	62.8	63.7	61.2	60.8	63.5	65.2	54.2	55.1	55.9

• Has a job but not at work during the reference week

*Excluding Northern province

**Selected Labour Force indicators
(2003 - 2011 Q2)**

	Year									
	2003*	2004**	2005***	2006 #	2007#	2008*	2009*	2010*	2011Q1*	*2011Q2
Labour force participation rate										
<i>by sex</i>										
Both sexes	48.9	48.6	48.3	51.2	49.8	49.5	48.7	48.1	48.0	48.3
Male	67.2	66.7	67.1	68.1	67.8	67.8	66.6	67.1	65.9	66.3
Female	31.4	31.5	30.9	35.7	33.4	33.2	32.8	31.2	31.9	32.3
<i>by residential sector</i>										
Total	48.9	48.6	48.3	51.2	49.8	49.5	48.7	48.1	48.0	48.3
Urban	44.4	44.9	45.5	45.3	45.0	45.9	43.5	42.0	41.5	45.5
Rural	49.6	49.2	48.7	52.1	50.4	50.0	49.4	49.0	49.0	48.7
Unemployment rate										
<i>by sex</i>										
Both sexes	8.4	8.3	7.7	6.5	6.0	5.4	5.8	4.9	4.3	4.2
Male	6.0	6.0	5.5	4.7	4.3	3.7	4.3	3.5	3.0	2.7
Female	13.2	12.8	11.9	9.7	9.0	8.4	8.6	7.7	6.7	7.0
<i>by selected age groups(yr)</i>										
20 - 29	19.4	19.2	17.2	15.9	15.0	13.7	15.4	13.8	12.8	13.2
20 - 24	26.4	25.9	24.6	21.0	21.1	18.1	21.4	19.1	16.4	20.0
25 - 29	11.4	11.4	9.5	11.0	9.4	9.5	10.3	9.2	9.6	7.6
<i>by selected educational levels</i>										
G.C.E.(A/L) & above										
Both sexes	16.5	16.8	13.8	11.6	11.8	10.5	11.2	11.6	10.0	
Male	10.4	10.5	8.9	6.9	6.6	6.0	7.0	7.9	6.4	
Female	23.3	23.8	19.1	16.8	17.5	15.3	15.5	15.8	14.3	
Employed population										
<i>by sex</i>										
Both sexes	7012755	7440226	7518007	7105322	7041874	7648305	7602414	7706593	7783574	7956518
Male	4833483	5087861	5134765	4610643	4653067	5033449	4963176	5131986	5125489	5233537
Female	2179272	2352365	2383241	2494679	2388807	2614856	2639238	2574608	2658085	2722981
<i>by industry (percentage)</i>										
Total	7012755	7394029	7518007	7105322	7041874	7648305	7602414	7706593	7783574	7956518
%	(100.0)	(100.0)	(100.0)	(100.0)	(100.0)	(100.0)	(100.0)	(100.0)	(100.0)	(100.0)
Agriculture	2384397	2474725	2306039	2287268	2202098	2489731	2475921	2519905	2511427	2684299
%	(34.0)	(33.5)	(30.7)	(32.2)	(31.3)	(32.6)	(32.6)	(32.7)	(32.3)	(33.7)
Industry	1611493	1781447	1928014	1889953	1873857	2004880	1910318	1866733	1951202.1	1877724
%	(23.0)	(24.1)	(25.6)	(26.6)	(26.6)	(26.2)	(25.1)	(24.2)	(25.1)	(23.6)
Services	3016866	3137857	3283954	2928101	2965919	3153693	3216175	3319955	3320945	3394495
%	(43.0)	(42.4)	(43.7)	(41.2)	(42.1)	(41.2)	(42.3)	(43.1)	(42.7)	(42.7)
<i>by no. of hours worked per week (percentage)</i>										
Total	100.0	100.0	100.0	100.0	100.0	100.0	100.0	100.0	100.0	100.0
0 •	7.5	5.2	4.7	6.7	6.5	7.2	7.9	6.0	4.1	7.7
1 - 9	1.8	1.6	1.5	1.9	1.5	2.2	2.3	1.7	1.5	2.5
10 - 39	32.6	28.7	27.6	28.6	28.3	28.9	28.8	28.5	29.4	33.9
40+	58.1	64.5	66.2	62.8	63.7	61.7	61.0	63.9	65.0	55.9

• Has a job but not at work during the reference week

*Excluding Northern province

** Excluding Mullativu & Kilinochchi districts

***All the districts are included

Excluding Northern & Eastern provinces